

Admiralty Tough Chart 12
SC5912 Rivers and Harbours of South Cornwall

The Notices to Mariners (NMs) listed below apply to the latest edition of Tough Chart 12 (SC5912) (1st Edition) published on 5th February 2009.

Note: Blocks and Notes for the current edition of this product are available as waterproof vinyl labels, printed specifically for use with Tough Charts. Please email customerservices@ukho.gov.uk or telephone 01823 723366 to request copies. There is no additional charge for this service.

~~L5685(T)/07 ENGLAND — South Coast — Falmouth — Inner Harbour — Empire Jetty and King's Jetty — Light. Buoy. Works.~~

Source: A & P Falmouth

- ~~1. Empire Jetty and King's Jetty are in the process of being demolished. Due to the existence of underwater obstructions, mariners should not pass east of the following navigational aids, which have been temporarily established: a) Port hand can light buoy, *FLR-2s*, in position 50° 09' 270N. , 5° 03' 600W. b) Light, *Fl.10s*, in position 50° 09' 330N. , 5° 03' 560W.~~

~~Charts affected: SC5912-4A~~

L846/09 ENGLAND — South Coast — Falmouth — Inner Harbour — Docks Basin — Jetties. Lights. Buoy. Coastline. Obstructions. Dolphin. Works. Berths. Legends.

Source: A&P Falmouth

Note: Former Notice L5685(T)/07 is cancelled.

Chart: SC5912-3 ETRS89 DATUM

Insert the accompanying block, showing amendments to lights,

coastline and legends, centred on:

50° 09' 31N. , 5° 02' 62W.

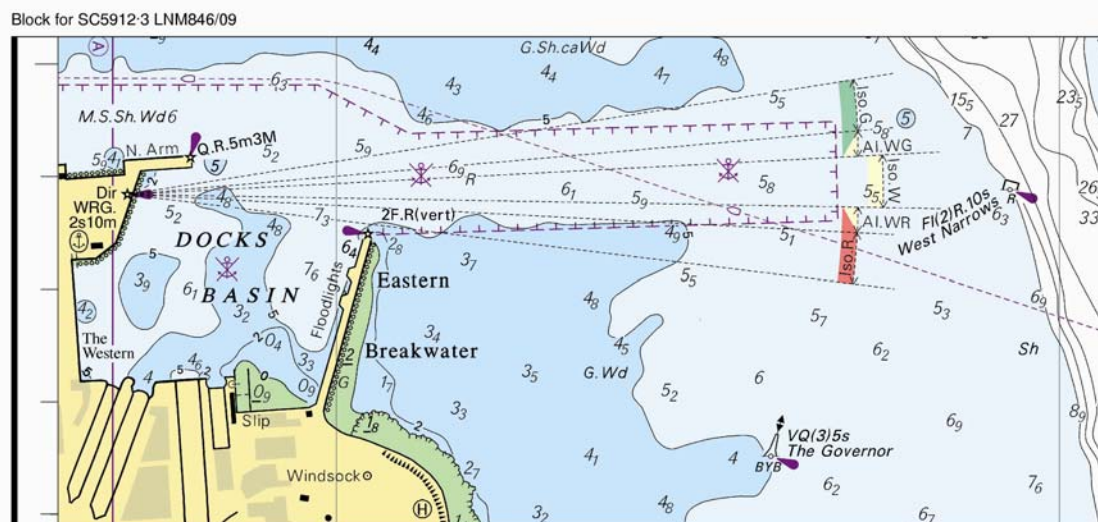
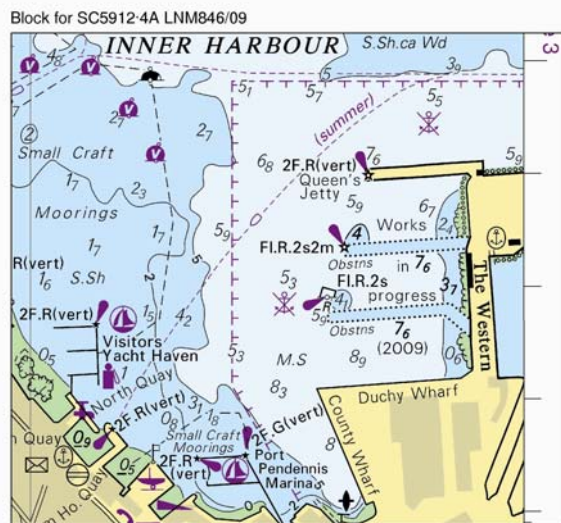


Chart: SC5912-4 (plan A, Falmouth) ETRS89 DATUM

Insert the accompanying block, showing amendments to jetties, lights, buoy, coastline, obstructions, works and legends, centred on:

50° 09' ·31N. , 5° 03' ·72W.

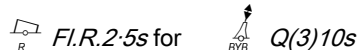


L1744/09 ENGLAND — South Coast — Falmouth — Black Rock Eastwards — Buoy.

Source: Falmouth Harbour Commissioners Notice 4/09

Chart: SC5912·3 ETRS89 DATUM

Substitute



50° 08' ·68N. , 5° 01' ·74W.

L2795/09 ENGLAND — South Coast — Cornwall — Helford River — August Rock — Buoy.

Source: Helford River Committee

Note: This update has been included in a New Edition of Chart 2565 published on 21 May 2009.

Chart: SC5912·1 ETRS89 DATUM

Insert



(a) 50° 06' ·140N. , 5° 04' ·970W.

Delete



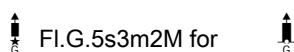
(a) above

L3244/10 ENGLAND — South Coast — Fowey Harbour — Polruan — Lamp Rk — Light-beacon. Beacon. Light.

Source: Fowey Harbour Commissioners

Chart: SC5912·8 ETRS89 DATUM

Substitute



(a) 50° 19' ·701N. , 4° 38' ·409W.

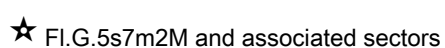
Insert

sector at light-beacon, as follows:

(a) above

G 357° - 214° (217°)

Delete



50° 19' ·702N. , 4° 38' ·378W.

Note: Blocks and Notes for the current edition of this product are available as waterproof vinyl labels, printed specifically for use with Tough Charts. Please email customerservices@ukho.gov.uk or telephone 01823 723366 to request copies. There is no additional charge for this service.