

**Admiralty Tough Chart 8**  
**SC5908 Rivers and Harbours of the Thames Estuary**

The Notices to Mariners (NMs) listed below apply to the latest edition of Tough Chart 8 (SC5908) (1<sup>st</sup> Edition) published on 3rd January 2008.

Note: Blocks and Notes for the current edition of this product are available as waterproof vinyl labels, printed specifically for use with Tough Charts. Please email [customerservices@ukho.gov.uk](mailto:customerservices@ukho.gov.uk) or telephone 01823 723366 to request copies. There is no additional charge for this service.

---

**~~L207(T)/08 ENGLAND — East Coast — Thames Estuary — Approaches to The Swale — Buoyage.~~**

~~Source: Trinity House Notice 63/07~~

- ~~1. A trial is currently underway, to synchronise the lights on buoys in The Swale Estuary, between positions 51° 24' 26N. , 1° 01' 35E. and 51° 20' 83N. , 0° 54' 40E.~~
- ~~2. Certain charted, unlit buoys are now lit and the following new light buoys have been established and are included in the trial:~~

<del>Swale 1</del>	<del>51° 24' 068N. , 1° 00' 690E.</del>
<del>Swale 2</del>	<del>51° 23' 840N. , 1° 00' 860E.</del>
<del>Swale 4</del>	<del>51° 23' 680N. , 1° 00' 185E.</del>
<del>Swale 5</del>	<del>51° 23' 530N. , 0° 59' 125E.</del>
<del>Swale 6</del>	<del>51° 23' 340N. , 0° 59' 360E.</del>
<del>Swale 7</del>	<del>51° 22' 183N. , 0° 57' 236E.</del>
<del>Swale 8</del>	<del>51° 22' 100N. , 0° 57' 400E.</del>
<del>S. Oaze</del>	<del>51° 21' 341N. , 0° 56' 014E.</del>

- ~~3. For full details and latest updates please refer to Trinity House Notices.~~
- ~~4. Former Notice L5892(T)/05 is cancelled.~~

**~~Charts affected — SC1183, SC1607, SC2482, SC5606-2, SC5606-5, SC5606-12 (plan A, Shell Ness to Conyer Creek), SC5907-2, SC5908-1, SC5908-3~~**

**This Notice has been superseded by later Notice L5611/08**

---

**L405/08 ENGLAND — East Coast — River Stour — The Horse to Straight Reach — Depths. Legend.**

Source: Harwich Haven Authority

**Chart: SC5908-16 (plan A, River Stour) ETRS89 DATUM**

Insert	circular limit of 0m contour, radius 50m, centred on:	(a) 51° 56' .87N. , 1° 08' .97E.
	legend, <i>Dries</i> , close E of:	(a) above
	depth <i>2<sub>1</sub></i>	(b) 51° 56' .99N. , 1° 09' .64E.
	depth <i>2</i> enclosed by 2m contour	51° 56' .96N. , 1° 08' .75E.
Delete	depth <i>0<sub>2</sub></i> , within:	(a) above

depth  $2_4$ , close S of:

(b) above

**Chart: SC5908-16 (plan B, Continuation of River Stour) ETRS89 DATUM**

Substitute depth  $1_4$  for depth  $1_9$  51° 56' ·913N. , 1° 06' ·667E.

---

**L463/08 ENGLAND — East Coast — Approaches to Brightlingsea — River Colne — Mersea Stone Northwards — Brightlingsea — Beacon. Buoyage. Lights. Light-beacons. Cautionary note.**

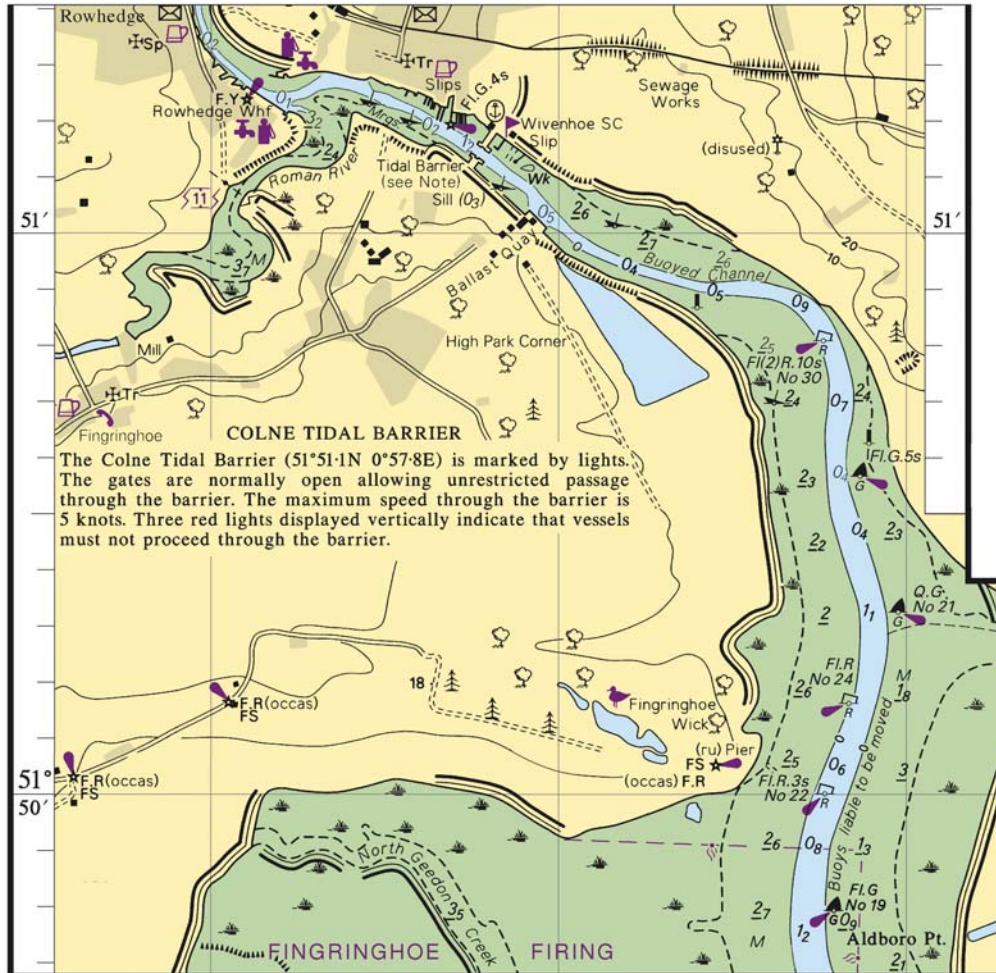
Source: Brightlingsea Harbour Commissioners

**Chart: SC5908-14 (plan B, Brightlingsea) ETRS89 DATUM**

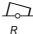
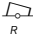
Insert  51° 48' ·272N. , 1° 01' ·380E.

**Chart: SC5908-14 (plan A, River Colne) ETRS89 DATUM**

Insert the accompanying block, showing amendments to lights, buoyage, light-beacons and cautionary note, centred on: 51° 50' ·60N. , 0° 57' ·80E.



**Chart: SC5908-14 (plan A, River Colne) ETRS89 DATUM**

Amend	light-buoy to, <i>FI.R</i>	51° 48' ·17N. , 1° 00' ·17E.
Move	 <i>Q.R No 12</i> , from:	51° 48' ·32N. , 0° 59' ·90E.
	to:	51° 48' ·35N. , 0° 59' ·88E.
Delete	 <i>No 22</i>	51° 49' ·70N. , 0° 58' ·65E.

**L574/08 ENGLAND — East Coast — River Medway — Limehouse Reach — Chatham Ness Shoal and Stanley's Wharf — Depths. Beacon.**

Source: Medway Port Authority

**Chart: SC5908-5 (plan B, Rochester) ETRS89 DATUM**

Insert	depth <i>0<sub>6</sub></i>	51° 23' ·202N. , 0° 30' ·929E.
Delete		51° 23' ·114N. , 0° 30' ·835E.

**L763/08 ENGLAND — East Coast — River Medway — Kethole Reach and Ferry Reach — Bee Ness Jetty and Second Swale Road Crossing North-**

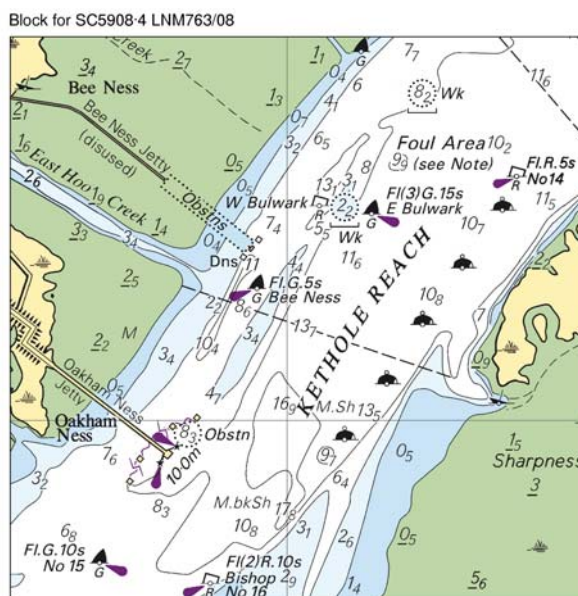
**eastwards — Obstructions. Jetty. Mooring buoys. Restricted area. Recommended anchorage.**

Source: Medway Ports Notice 2/08 and UK Hydrographic Office

**Chart: SC5908-4 ETRS89 DATUM**

Insert the accompanying block, showing new obstructions and amendments to jetty, centred on:

51° 25' ·20N. , 0° 39' ·00E.



**L1476/08 ENGLAND — East Coast — River Stour — Ewarton Ness South-eastwards and South-westwards — Bawdsey Anchorage Southwards — Depths.**  
Source: Harwich Haven Authority

**Chart: SC5908-16 (plan A, River Stour) ETRS89 DATUM**

Insert depth 4<sub>9</sub> and extend 5m contour N to enclose (a) 51° 56' ·92N. , 1° 13' ·56E.

depth 4<sub>7</sub> and extend 5m contour S to enclose (b) 51° 57' ·07N. , 1° 12' ·80E.

Delete depth 5<sub>3</sub>, adjacent to: (a) above

depth 6<sub>8</sub>, close SE of: (b) above

**L1444(P)/08 ENGLAND — East Coast — River Medway — Gillingham Reach — Nor Marsh — Beacon.**

Source: Medway Ports Notice 8/08

1. The rear leading beacon, No 5, in position 51° 23' ·80N. , 0° 35' ·80E. , has been destroyed.
2. Charts will be updated when further information becomes available.

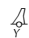
**Charts affected: SC1834, SC5606-11 (plan A, Saltpan Reach to Chatham Reach), SC5908-4**

**L2177/08 ENGLAND — East Coast — Harwich Navyard Northwards — Horse Bank — Buoy.**

Source: Harwich Haven Authority Notice 8/08

**Chart: SC5908-15 ETRS89 DATUM**

Insert

 *F(4)Y.10s (Apr-Oct)*

51° 57' .32N. , 1° 17' .46E.

---

**L2573/08 ENGLAND — East Coast — Approaches to Harwich and Felixstowe — Landguard Point South-westwards — Horse Bank — Parkeston Anchorage Eastwards — Depths.**

Source: UKHO

**Chart: SC5908-15 ETRS89 DATUM**

Insert depth *1<sub>6</sub>* and extend 2m contour E to enclose

51° 57' .40N. , 1° 17' .40E.

depth *4<sub>4</sub>* and extend 5m contour SE to enclose

(a) 51° 57' .26N. , 1° 17' .63E.

Delete depth *5<sub>3</sub>*, close NW of:

(a) above

**Chart: SC5908-16 (plan A, River Stour) ETRS89 DATUM**

Insert

depth *5<sub>3</sub>*

51° 57' .10N. , 1° 14' .87E.

---

**L3810/08 ENGLAND — East Coast — Felixstowe — Felixstowe Dock Basin Entrance — Lights. Signal station.**

Source: Harwich Haven Authority Notice 14/08

**Chart: SC5908-15 ETRS89 DATUM**

Delete

★ F.G

51° 56' .90N. , 1° 18' .94E.

★ F.R

51° 56' .95N. , 1° 18' .99E.

---

**L4122/08 ENGLAND — East Coast — Felixstowe — Oil Jetty Southwards — Works.**

Source: Harwich Haven Authority Notice 16/08

**Chart: SC5908-15 ETRS89 DATUM**

Insert legend, Works in progress (2008), centred on:

51° 56' .88N. , 1° 18' .82E.

---

**L4123/08 ENGLAND — East Coast — River Orwell - Collimer Pt Northwards — Depth.**

Source: Ipswich Port Authority

**Chart: SC5908-15 ETRS89 DATUM**

Insert depth *1<sub>8</sub>* and extend 2m contour S to enclose

51° 59' .53N. , 1° 16' .03E.

---

**L4465/08 ENGLAND — East Coast — The Swale — Loden Hope — Coal Washer Wharf North-westwards — Wreck.**

Source: Peel Ports Notice 26/08

**Chart: SC5908-1 (plan A, River Medway and West Swale) ETRS89 DATUM**




---

**L4740/08 ENGLAND — Thames Estuary — River Medway — West Swale — Kingsferry Bridge South-eastwards — Light-beacon.**

Source: Medway Ports Notice 27/08

**Chart: SC5908·1 (plan A, River Medway and West Swale) ETRS89 DATUM**

Amend light-beacon to, Dir Iso.WRG Al.WR Al.WG.9m 51° 23' ·15N. , 0° 45' ·29E.

**Chart: SC5908·2 ETRS89 DATUM**

Amend light-beacon to, Dir Iso.WRG Al.WR Al.WG.9m 51° 23' ·15N. , 0° 45' ·29E.

**Chart: SC5908·1 (plan B, Ferry Reach) ETRS89 DATUM**

Amend light-beacon to, Dir Iso.WRG Al.WR Al.WG.9m 51° 23' ·15N. , 0° 45' ·29E.





---

**L5611/08 ENGLAND — East Coast — Thames Estuary — Approaches to the Swale — Buoyage.**

Source: Trinity House Notices 28/08 & 31/08 & Medway Ports Notices 28/08 & 33/08

Note: Former Notice L207(T)/08 is cancelled.

**Chart: SC5908·3 ETRS89 DATUM**

Substitute  Ham Gat Q.G for  Ham Gat 51° 23' ·08N. , 0° 58' ·32E.  
 Receptive Point Fl.G. 10s for  Fl.G. 10s 51° 20' ·86N. , 0° 54' ·41E.

---

~~**L6046(T)/08 ENGLAND — East Coast — River Blackwater — Thirslet Creek — Measuring instruments.**~~

Source: Maldon District Council

- ~~1. Water quality monitoring equipment, in the form of a white catamaran type float, has been moored within the following area:~~

~~51° 43' ·87N. , 0° 50' ·17E.~~

~~51° 43' ·97N. , 0° 49' ·57E.~~

~~51° 44' ·05N. , 0° 49' ·56E.~~

~~51° 43' ·97N. , 0° 50' ·17E.~~

- ~~2. The equipment will be marked by a light, Q.Y, and will remain on station until further notice.~~
- ~~3. Mariners are requested to exercise caution when navigating in this area.~~
- ~~4. For further information contact the River Bailiff, Maldon District Council, Tel. 01621 875837~~

~~**Chart affected: SC3741, SC5908-12, SC5607-10**~~

---

**L7033/08 ENGLAND — East Coast — Port Of Felixstowe — Oil Jetty Westwards and Southwards — Buoyage.**

Source: Harwich Haven Authority

**Chart: SC5908-15 ETRS89 DATUM**

Insert  *Q.G* 51° 57' .06N. , 1° 18' .67E.

---

**L7062/08 ENGLAND — East Coast — River Medway — Pinup Reach — Mooring buoys.**

Source: Peel Ports, Medway Notice 38/08

**Chart: SC5908-4 ETRS89 DATUM**

Insert  *Pinup Lower* 51° 24' .29N. , 0° 35' .30E.

Amend designation of mooring buoy to, *Pinup Upper* 51° 24' .22N. , 0° 35' .22E.

---

**L507/09 ENGLAND — East Coast — The Swale — Elmley Reach — Buoyage.**

Source: Peel Ports Notice 43/08

**Chart: SC5908-2 ETRS89 DATUM**

Substitute  *Fl.G.2s North Ferry* for  *North Ferry* 51° 21' .88N. , 0° 46' .52E.

 *Fl.R.2s South Ferry* for  *South Ferry* 51° 21' .85N. , 0° 46' .47E.

---

**L692(T)/09 ENGLAND — East Coast — River Colne — Mersea Stone Northwards and North-eastwards — Barge.**

Source: MT Hojgaard A/S

1. A floating harbour consisting of a barge (70m x 19.5m approx) has been anchored in the River Colne, 220m northwards of Mersea Stone in position 51° 48' .10N. , 1° 00' .35E. (ETRS89 Datum). The barge will be lit at all times and will be anchored in a NW-SE direction by anchors and chains extending 200m from each corner. Anchors will be marked by orange light-buoys, *Fl.Y.5s*.
2. The floating harbour is expected to remain in position until the end of April 2009.
3. Tugs, barges and floating sheerlegs will be operating in this area; mariners are requested to exercise caution.

**Charts affected: SC3741, SC5607-11A, SC5907-16, SC5908-14A.**

---

**L1840/09 ENGLAND — East Coast — River Medway — Nor Marsh and Gillingham Reach — Beacon. Leading line.**

Source: Medway Ports

**Chart: SC5908-4 ETRS89 DATUM**

Delete symbol, black and white beacon, No 5 51° 23' .80N. , 0° 35' .80E.

---

**Notices to Mariners - Weekly Edition 15/2009 ENGLAND — East Coast, Approaches to Felixstowe, Harwich, and Ipswich with the Rivers Stour, Orwell and Deben — Chart 2693 — New Edition Announcement.**

Chart SC5908-7, SC5908-8, SC5908-9 WGS84 DATUM

The following changes were published in the new edition of chart 2693, which is the source chart for the above Tough Chart pages:

*This new edition includes the latest depth information throughout from commercial and port surveys, changes to coastline at Felixstowe South and changes to landmarks in the Port of Ipswich.*

*Mariners should therefore navigate with caution on pages 5908-7, 5608-8 and 5908-9 and be aware that any subsequent Notices to Mariners applied to these pages are issued for information only.*

These changes will be included in the next new edition of SC5908.

---

### **L2174/09 ENGLAND — East Coast — River Orwell — Ipswich — Power Station Berth and Cement Terminal — Legends.**

Source: ABP Ipswich Notice 4/09

#### **Chart: SC5908-17 (plan B, Ipswich) ETRS89 DATUM**

Insert	legend, 6.5m, orientated NNW/SSE, centred on:	(a) 52° 01' .965N. , 1° 09' .539E.
	legend 7.2m, orientated NNW/SSE, centred on:	52° 01' .926N. , 1° 09' .574E.
	legend 7.7m, orientated N/S, centred on:	(b) 52° 02' .157N. , 1° 09' .467E.
	legend, 6.8m, orientated N/S, centred on:	52° 02' .096N. , 1° 09' .468E.
Delete	legend 7.5m, adjacent to:	(a) above
	legend 8.2m, close S of:	(b) above

---

### **L2366/09 ENGLAND — East Coast — River Medway — Saltpan Reach — Grain LNG Terminal Eastwards — Lights. Fog signal.**

Source: Peel Ports, Medway Notice 12/09

#### **Chart: SC5908-1 (plan A, River Medway and West Swale) ETRS89 DATUM**

Substitute	★ Horn(1)20s for	★ 2Fl.G.3s(vert) Horn(1)20s	(a) 51° 26' .02N. , 0° 42' .75E.
Delete	★ 2Fl.G.5s(vert), close W of:		(a) above

---

### **~~L2408(T)/09 ENGLAND — East Coast — Port of Felixstowe — Works.~~**

Source: ~~Harwich Haven Authority Notice 07/09~~

- ~~1. Mariners are advised that the Felixstowe South Reconfiguration works are ongoing. An Exclusion Zone known as the Felixstowe South Reconfiguration Works Area (where reclamation works are in progress) has been established for the landward area, bounded by the following positions:~~

<del>51° 57' .08N. , 1° 18' .92E.</del>	<del>(RoRo No 3 berth)</del>
<del>51° 57' .06N. , 1° 18' .67E.</del>	<del>(Green light buoy)</del>
<del>51° 56' .63N. , 1° 18' .91E.</del>	<del>(Green light buoy)</del>
<del>51° 56' .68N. , 1° 19' .14E.</del>	<del>(Landguard Quay)</del>

~~2. For Phase VI of the works an Exclusion Zone known as Harwich Shelf Works Area (where channel widening by dredging is in progress) has been established, bounded by the following positions:~~

- ~~51° 57' 08N., 1° 17' 86E. (Guard light buoy)~~
- ~~51° 56' 85N., 1° 18' 19E. (Yellow light buoy)~~
- ~~51° 56' 46N., 1° 18' 41E. (Yellow light buoy)~~
- ~~51° 55' 71N., 1° 18' 54E. (Cliff Foot light buoy)~~
- ~~51° 56' 68N., 1° 18' 59E. (North Shelf light buoy)~~
- ~~51° 56' 89N., 1° 18' 33E. (Grisle light buoy)~~

~~3. Only authorised construction vessels are permitted to enter or pass through the above Works Areas.~~

~~4. The charted recommended track for yachts has been amended to avoid the Harwich Shelf Works Exclusion Zone as follows:~~

- ~~51° 57' 53N., 1° 17' 25E. (start of existing track)~~
- ~~51° 56' 81N., 1° 18' 16E.~~
- ~~51° 56' 79N., 1° 18' 17E.~~
- ~~51° 56' 45N., 1° 18' 32E.~~
- ~~51° 55' 66N., 1° 18' 36E. (existing track)~~

~~5. Yachtsmen are advised to refer to Harwich Haven Authority Notices to Mariners and the Royal Yachting Association Eastern Region website for further details of the revised recommended track. (All the above positions are referred to ETRS89 Datum)~~

~~6. For the latest details of the above works and any navigational restrictions in place contact Harwich Haven Authority. All mariners are advised to maintain a listening watch on VHF Channel 71 (Harwich VTS) for regular navigation broadcasts and any specific operational or navigational requirements relating to the works.~~


~~7. Charts will be updated when works are complete.~~

**Charts affected: SC5607-6A, SC5907-17, SC5908-15**

**L2409/09 ENGLAND — East Coast — Port of Felixstowe — Buoyage. Works.  
Legend. Dredged depths. Depth.**

Source: Harwich Haven Authority Notices 07/09 & 12/09

**Chart: SC5908-15 ETRS89 DATUM**

- Insert  *Fl.Y.3s* (a) 51° 56' 85N., 1° 18' 19E.  
 51° 56' 46N., 1° 18' 41E.  
 legend, Works in progress (2009), orientated NW/SE, centred on: 51° 56' 7N., 1° 18' 4E.  
 legend, See LNM L2408(P)/09, centred on: 51° 56' 4N., 1° 18' 8E.  
 Amend dredged depth to, 10.5m, centred on: 51° 56' 63N., 1° 19' 12E.  
 51° 56' 55N., 1° 19' 02E.  
 Delete depth 3s, adjacent to: (a) above

**L2742/09 ENGLAND — East Coast — Ipswich — River Orwell — Ostrich Creek — Buoy.**

Source: ABP Ipswich Notice 6/09

**Chart: SC5908-17 (plan A, River Orwell) ETRS89 DATUM**

Move  *Q.R*, from: 52° 02' ·11N. , 1° 09' ·34E.  
to: 52° 02' ·06N. , 1° 09' ·39E.

**Chart: SC5908-17 (plan B, Ipswich) ETRS89 DATUM**

Move  *Q.R No 12*, from: 52° 02' ·113N. , 1° 09' ·343E.  
to: 52° 02' ·064N. , 1° 09' ·387E.

---

**L2764/09 ENGLAND — East Coast — West Swale — Horse Reach — Buoy.**

Source: Medway Notice 13/09

**Chart: SC5908-1 (plan A, River Medway and West Swale) ETRS89 DATUM**

Insert  *Oc.G STA* 51° 23' ·79N. , 0° 44' ·37E.

---

**L2836(T)/09 ENGLAND — East Coast — River Medway — Isle of Grain — Grain Pier East-north-eastwards — Buoy.**

Source: Medway Notice 14/09

1. The starboard-hand light-buoy *N Kent, Q.G.*, (51° 26' ·142N. , 0° 43' ·452E. ) has been temporarily moved to position 51° 26' ·180N. , 0° 43' ·554E. (ETRS89 Datum)

**Charts affected: SC1834, SC2482, SC5606-9, SC5606-10, SC5907-12, SC5907-13, SC5908-1**

---

**L2972/09 ENGLAND — East Coast — The Swale and River Medway — Elmley Reach and Saltpan Reach — Obstruction. Depths. Buoy.**

Source: Peel Ports, Medway Notices 15-16/09

**Chart: SC5908-1 (plan A, River Medway and West Swale) ETRS89 DATUM**

Insert  *Obstn* (a) 51° 25' ·63N. , 0° 41' ·50E.

Delete depth *10i*, adjacent to: (a) above

**Chart: SC5908-1 (plan A, River Medway and West Swale) ETRS89 DATUM**

Substitute  *VQ(6)+LFI.10s Lilies* for  *Lilies* 51° 21' ·98N. , 0° 46' ·05E.

**Chart: SC5908-2 ETRS89 DATUM**

Substitute  *VQ(6)+LFI.10s Lilies* for  *Lilies* 51° 21' ·98N. , 0° 46' ·05E.

---

**L3239/09 ENGLAND — East Coast — River Medway — Saltpan Reach — Thamesport — Berth No 2 — Depths.**

Source: Medway Port Authority

**Chart: SC5908-4 ETRS89 DATUM**

Substitute

depth 2<sub>8</sub> for depth 3<sub>8</sub>

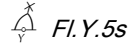
51° 25' ·94N. , 0° 40' ·80E.

**L3443/09 ENGLAND — East Coast — River Medway — Saltpan Reach — Buoy. Works.**

Source: Peel Ports, Medway Notice 21/09

**Chart: SC5908·1 (plan A, River Medway and West Swale) ETRS89 DATUM**

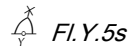
Delete



51° 25' ·85N. , 0° 42' ·18E.

**Chart: SC5908·4 ETRS89 DATUM**

Delete



51° 25' ·85N. , 0° 42' ·18E.

**L5750/09 ENGLAND — East Coast — River Medway — Kethole Reach — Depths.**

Source: Medway Ports

**Chart: SC5908·4 ETRS89 DATUM**

Insert depth 8<sub>9</sub> enclosed by 10m contour

(a) 51° 24' ·94N. , 0° 39' ·14E.

Delete depth 9<sub>7</sub> enclosed by 10m contour, adjacent to:

(a) above

**Office Correction ENGLAND — East Coast — The Swale — Border Labelling. Note.**

Source: UKHO (16/10/2009)

**Chart: SC5908·3 WGS84 DATUM**

Substitute	51' for 52'	N and S borders
	52' for 53'	N and S borders
	53' for 54'	N and S borders
	54' for 0° 55'	N and S borders
	0° 55' for 56'	N and S borders
	56' for 57'	N and S borders
	57' for 58'	N and S borders
	58' for 59'	N and S borders
	the accompanying note, SHELLFISH BEDS, for existing note, SHELLFISH BEDS, centred on:	Close E of the compass rose

**SHELLFISH BEDS**

The western end of Horse Sands (51°21'·1N 0°53'·4E) and the whole of the entrance to the Swale are occupied by shellfish beds. Vessels should avoid grounding in areas of shellfish beds.

**L6197(T)/09 ENGLAND — East Coast — The Swale — Faversham Creek — Buoy.**

Source: Peel Ports, Medway Notice 31/09

1. The north cardinal buoy, *Faversham Spit*, in position 51° 20' ·753N. , 0° 54' ·173E. has been temporarily lit, *Q*.


**Charts affected: SC5606·12A, SC5908·3.**

---

**L6350/09 ENGLAND — East Coast — River Medway — Wickham Reach — Drying heights. Depths. Beacon.**

Source: Medway Ports

**Chart: SC5908·5 (plan A, Hoo Island to Medway Bridge) ETRS89 DATUM**

Insert	drying height $Q_4$ enclosed by low water line	(a) 51° 22' ·74N. , 0° 28' ·76E.
	drying height $Q_5$ enclosed by low water line	(b) 51° 22' ·76N. , 0° 28' ·91E.
Delete	depth $O_4$ , adjacent to:	(a) above
	depth $O_5$ , adjacent to:	(b) above
	 Borstal Bn, close SSE of:	(b) above

---

**L206/10 ENGLAND — East Coast — River Crouch — Ness Hole — Wreck. Buoy.**

Source: Crouch Harbour Authority

**Chart: SC5908·7 ETRS89 DATUM**

Insert		(a) 51° 37' ·07N. , 0° 52' ·61E.
	 <i>Fl(2)5s</i> , close N of:	(a) above

---

**L880(P)/10 ENGLAND — East Coast — Port of Felixstowe — Works. Lights.**

Source: Harwich Haven Authority

1. Mariners are advised that the Felixstowe South Reconfiguration works are ongoing. An Exclusion Zone known as the Felixstowe South Reconfiguration Works Area (where reclamation works are in progress) has been established for the landward area, bound by the following positions:

51° 57' ·08N. , 1° 18' ·92E.	(RoRo No 3 berth)
51° 57' ·06N. , 1° 18' ·67E.	(Green light-buoy)
51° 56' ·63N. , 1° 18' ·91E.	(Green light-buoy)
51° 56' ·68N. , 1° 19' ·14E.	(Landguard)
2. Only authorised construction vessels are permitted to enter or pass through the Works area.
3. Temporary lights, 2F.G(vert), have been established on the North-west and South-west corners of the reclamation area in approximate positions 51° 57' ·036N. , 1° 18' ·750E. and 51° 56' ·662N. , 1° 18' ·956E.
4. For the latest details of the above works and any navigational restrictions in place contact Harwich Haven Authority. All mariners are advised to maintain a listening watch on VHF

- Channel 71 (Harwich VTS) for regular navigation broadcasts and any specific operational or navigational requirements relating to the works, including detailed buoy movements.
5. Charts 1491, 2693, SC5607-6, SC5907-17 and SC5908-15 have been updated by Notices to Mariners Block for the latest changes to the reclamation area, dredged areas, buoyage and lights.(All positions are referred to ETRS89 Datum)
  6. Former Notice L2408(P)/09 is cancelled.

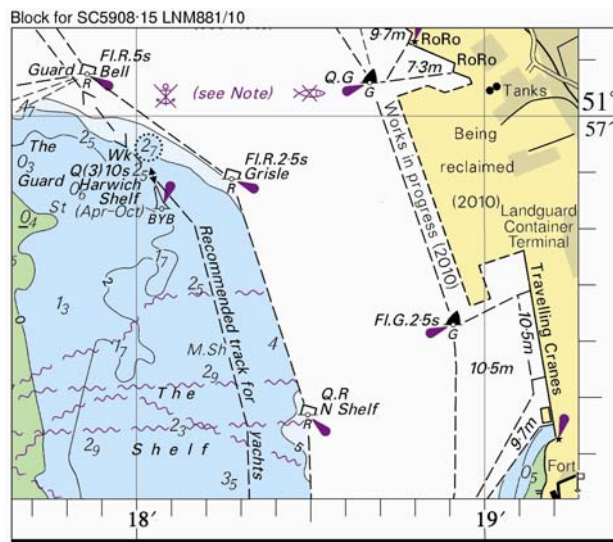
**Charts affected: SC5607-6, SC5907-17, SC5908-15**

**L881/10 ENGLAND — East Coast — Port of Felixstowe — Coastline. Depths. Dredged areas. Buoyage. Reclamation area. Works. Recommended track. Lights. Berths. Dolphins. Jetty. Legends.**

Source: Harwich Haven Authority

**Chart: SC5908-15 ETRS89 DATUM**

Insert the accompanying block, showing amendments to coastline, depths, dredged areas, buoyage, reclamation area, works, recommended track, lights and legends, centred on: 51° 56' .75N. , 1° 18' .50E.  
 legend, *See NM L880(P)/10*, centred on: 51° 56' .78N. , 1° 18' .62E.



**Notices to Mariners - Weekly Edition 12/2010 ENGLAND — East Coast, Rivers Crouch and Roach — Chart 3750 — New Edition Announcement.**

**Chart SC5908-15, SC5908-16 and SC5908-17 WGS84 DATUM**

The following changes were published in the new edition of chart 3750, which is the source chart for the above Tough Chart pages:

*This new edition includes changes to depths from latest Port of London Authority survey and updates to coastline and landmarks throughout.*

*Mariners should therefore navigate with caution on pages SC5908·15, SC5908·16 and SC5908·17 and be aware that any subsequent Notices to Mariners applied to these pages are issued for information only.*

These changes will be included in the next new edition of SC5908.

---

**L1680/10 ENGLAND — East Coast — The Swale — Milton Creek — Church Wharf Eastwards — Legend.**

Source: Peel Ports, Medway Notice 6/10

**Chart: SC5908·1 (plan A, River Medway and West Swale) ETRS89 DATUM**

Insert legend, Bridge under const (2010) (Lts), centred on: 51° 21' ·21N. , 0° 45' ·61E.

**Chart: SC5908·2 ETRS89 DATUM**

Insert legend, Bridge under const (2010) (Lts), centred on: 51° 21' ·21N. , 0° 45' ·61E.

---

**L1871(T)/10 ENGLAND — East Coast — River Medway — Tower Reach — Rochester Bridge — Vertical clearance.**

Source: Peel Ports, Medway Notice 7/10

1. Works are taking place to Rochester Bridge in the vicinity of position 51° 23' ·535N. , 0° 30' ·035E. (WGS84 Datum).
2. Scaffolding will be erected which may reduce the vertical clearance of the bridge by 0·5 metres.
3. The affected spans of the bridge will be lit at night by white lights.
4. Further information can be obtained from the Medway Navigation Service.

**Charts affected: SC5606·11, SC5606·12, SC5908·5**

---

**Notices to Mariners - Weekly Edition 16/2010 ENGLAND — East Coast, Rivers Colne and Blackwater — Chart 3741 — New Edition Announcement.**

**Chart SC5908·10, SC5908·11, SC5908·12, SC5908·13 and SC5908·14 WGS84 DATUM**

The following changes were published in the new edition of chart 3741, which is the source chart for the above Tough Chart pages

*This new edition is fully modernised and updated throughout. Mariners should therefore navigate with caution on pages SC5908·10, SC5908·11, SC5908·12, SC5908·13 and SC5908·14 and be aware that any subsequent Notices to Mariners applied to these pages are issued for information only.*

These changes will be included in the next new edition of SC5908.

---

**L3185/10 ENGLAND — East Coast — River Crouch — Wallasea Island  
Eastwards — Whitaker Channel — Legends. Cautionary note. Depth.**  
Source: Port of London Authority

**Chart: SC5908·7 ETRS89 DATUM**

Insert	depth $0_9$ enclosed by 2m contour	51° 36' ·91N. , 0° 52' ·10E.
	legend, <i>Channel Depths (see Note)</i> , centred on:	51° 37' ·70N. , 0° 56' ·44E.
		51° 39' ·13N. , 1° 00' ·61E.
	the accompanying note, CHANNEL DEPTHS.	Notes page.

CHANNEL DEPTHS  
A recent 2010 survey indicates changes to depths  
in the channel, some of which may be shoaler.  
Buoyage may be moved accordingly. For latest  
information, contact the Harbour Master.

---

Note: Blocks and Notes for the current edition of this product are available as waterproof vinyl labels, printed specifically for use with Tough Charts. Please email [customerservices@ukho.gov.uk](mailto:customerservices@ukho.gov.uk) or telephone 01823 723366 to request copies. There is no additional charge for this service.