

**Admiralty Tough Chart 6**  
**SC5906 Firth of Clyde**

The Notices to Mariners (NMs) listed below apply to the latest edition of Tough Chart 6 (SC5906) (1<sup>st</sup> Edition) published on 23<sup>rd</sup> August 2007.

Note: Blocks and Notes for the current edition of this product are available as waterproof vinyl labels, printed specifically for use with Tough Charts. Please email [customerservices@ukho.gov.uk](mailto:customerservices@ukho.gov.uk) or telephone 01823 723366 to request copies. There is no additional charge for this service.

---

**L3366/07 SCOTLAND — Firth of Clyde — Lower Loch Fyne — Barmore Island Northwards — Sgeir Mhaola Cinn — Beacon. Rock.**

Source: Clyde Cruising Club

**Chart: SC5906-15 WGS84 DATUM**

Substitute  for  55° 53' ·66N. , 5° 24' ·45W.

---

**L3804/07 SCOTLAND — West Coast — Firth of Clyde — Heads of Ayr Westwards — Buoy.**

Source: SALMO (NORTH)

**Chart: SC5906-2 ETRS89 DATUM**



Delete  *Fl.Y. 10s DZ* 55° 26' ·20N. , 4° 50' ·24W.

---

**L4418/07 SCOTLAND — Firth of Clyde — Toward Point Southwards — Buoy.**

Source: Clydeport Notice 36/07

**Chart: SC5906-9 ETRS89 DATUM**

Substitute  *Q(3) No 34* for  *No 34* 55° 51' ·44N. , 4° 59' ·10W.

---

**L4957/07 SCOTLAND — West Coast — Kilbrannan Sound — Carradale South-eastwards — Port Righ — Buoy.**

Source: C D Campbell Marine Contracts

**Chart: SC5906-11 ETRS89 DATUM**

Insert  *Fl.Y.5s* 55° 35' ·19N. , 5° 27' ·41W.

---


**L5110/07 SCOTLAND — West Coast — Isle of Arran Westwards — Kilbrannan Sound — Foul. Buoy.**

Source: Northern Lighthouse Board

**Chart: SC5906-3 ETRS89 DATUM**

Substitute # for  *Fl(5)Y.20s* 55° 32' ·0N. , 5° 25' ·0W.

**Chart: SC5906-11 ETRS89 DATUM**

Substitute # for  *Fl(5)Y.20s* 55° 32' ·0N. , 5° 25' ·0W.

---

**L5239/07 SCOTLAND — Firth of Clyde — Irvine — Irvine Bar — Light-beacon.**

Source: Northern Lighthouse Board

**Chart: SC5906-6 ETRS89 DATUM**


Delete  *Fl.R.5M* 55° 36' ·21N. , 4° 42' ·08W.

---

**L1382/08 SCOTLAND — West Coast — Firth of Clyde — Lower Loch Fyne — Marine farms.**

Source: The Crown Estate

**Chart: SC5906-15 ETRS89 DATUM**

Insert  55° 50' ·10N. , 5° 21' ·10W.

Delete  55° 52' ·52N. , 5° 19' ·40W.

55° 50' ·50N. , 5° 21' ·43W.

---

**L1396/08 SCOTLAND — Firth of Clyde — Kip Marina — Buoy.**

Source: Northern Lighthouse Board

**Chart: SC5906-19 (plan A, Approaches to Kip Marina) ETRS89 DATUM**

Amend *Kip* light-buoy to, *Fl.G.5s* 55° 54' ·48N. , 4° 52' ·97W.

---

**L3002/08 SCOTLAND — Firth of Clyde — Innellan and The Bridges — Outfalls.**

Source: Biwater Ltd

**Chart: SC5906-9 ETRS89 DATUM**

Insert outfall, , joining: 55° 53' ·45N. , 4° 57' ·53W. (shore)

55° 53' ·39N. , 4° 57' ·39W.

and

55° 53' ·21N. , 4° 57' ·87W. (shore)

55° 53' ·12N. , 4° 57' ·72W.

and

55° 52' ·75N. , 4° 58' ·42W. (shore)

55° 52' ·65N. , 4° 58' ·02W.


---

**L4262/08 SCOTLAND — West Coast — Firth of Clyde — Isle of Bute — Rothesay Harbour — Albert Pier and Main Pier — Lights. Signal station.**

Source: Argyll and Bute Council

**Chart: SC5906-18 (plan B, Rothesay Bay) ETRS89 DATUM**

Insert  SS(INT) (a) 55° 50' ·32N. , 5° 03' ·05W.

Delete  Fl.G.3s2M, close W of: (a) above

---

**L4866/08 SCOTLAND — West Coast — Firth of Clyde — Lower Loch Fyne — Portavadie — Lights.**

Source: Manager, Portavadie Marina

**Chart: SC5906-15 ETRS89 DATUM**

Insert  Fl(2)G & Fl.R 55° 52' ·25N. , 5° 19' ·00W.

---

**L5703/08 SCOTLAND — Firth of Clyde — Dunoon Bank — Buoy.**

Source: Clydeport Estuary Control

**Chart: SC5906-19 (plan B, Approaches to Holy Loch) ETRS89 DATUM**

Delete  Fl(5)Y 55° 56' ·83N. , 4° 54' ·25W.

---

**L5941/08 SCOTLAND — Firth of Clyde — Isle of Arran — Lamlash Harbour — North Channel — Restricted area.**

Source: The Scottish Government Statutory Instruments 317/08

**Chart: SC5906-2 ETRS89 DATUM**

Insert limit of restricted area, , joining: 55° 32' ·60N. , 5° 06' ·51W. (shore)  
55° 31' ·56N. , 5° 05' ·22W. (shore)  
and  
55° 31' ·88N. , 5° 04' ·30W. (shore)  
55° 33' ·00N. , 5° 04' ·82W. (islet)

**Chart: SC5906-3 ETRS89 DATUM**

Insert limit of restricted area, , joining: 55° 32' ·60N. , 5° 06' ·51W. (shore)  
55° 31' ·56N. , 5° 05' ·22W. (shore)  
and  
55° 31' ·88N. , 5° 04' ·30W. (shore)  
55° 33' ·00N. , 5° 04' ·82W. (islet)

**Chart: SC5906-4 ETRS89 DATUM**

Insert limit of restricted area, , joining: 55° 32' ·60N. , 5° 06' ·51W. (shore)  
55° 31' ·56N. , 5° 05' ·22W. (shore)  
and  
55° 31' ·88N. , 5° 04' ·30W. (shore)

55° 33' ·00N. , 5° 04' ·82W.  
55° 33' ·00N. , 5° 04' ·96W. (shore)

**Chart: SC5906·16 (plan B, Lamlash Harbour) ETRS89 DATUM**

Insert limit of restricted area, , joining: 55° 32' ·60N. , 5° 06' ·51W. (shore)  
55° 31' ·56N. , 5° 05' ·22W. (shore)  
and  
55° 31' ·88N. , 5° 04' ·30W. (shore)  
55° 33' ·00N. , 5° 04' ·82W.  
55° 33' ·00N. , 5° 04' ·96W. (shore)

---

**L1260/09 SCOTLAND — Firth of Clyde — Firth of Clyde Channel — Warden Bank North-westwards — Wreck.**  
Source: Clydeport Notices 18-19/09

**Chart: SC5906·19 (plan B, Approaches to Holy Loch) ETRS89 DATUM**

Insert  *Wk* 55° 55' ·84N. , 4° 54' ·98W.

---

~~**L1279(T)/09 SCOTLAND — West Coast — Firth of Clyde — Dunoon Bank — Data buoy.**~~  
~~Source: Clydeport Notice 17/09~~

~~1. — A yellow data collection buoy, *FLY.5s*, has been established in position 55° 56' ·70N. , 4° 54' ·24W. (ETRS89 Datum).~~

~~**Charts affected: SC1907, SC1994, SC5610·2A, SC5906·19B**~~

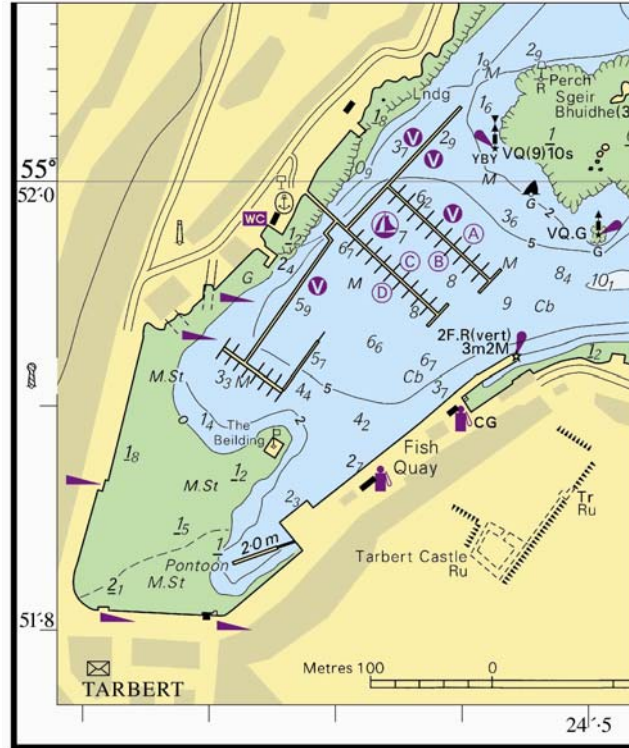
---

**L1490/09 SCOTLAND — West Coast — Firth of Clyde — Lower Loch Fyne — East Loch Tarbert — Dredged area. Berths. Pontoons. Quay. Depths.**  
Source: Tarbert (Loch Fyne) Harbour Authority

**Chart: SC5906·17 (plan B, East Loch Tarbert) ETRS89 DATUM**

Insert the accompanying block, showing new dredged area,  
berths and amendments to pontoons, quay and  
depths, centred on: 55° 51' ·92N. , 5° 24' ·71W.  
Substitute depth *3<sub>s</sub>* enclosed by 5m contour for depth *5<sub>s</sub>* 55° 51' ·940N. , 5° 23' ·828W.

Block for SC5906-17B LNM1490/09



**L2190/09 SCOTLAND — Firth of Clyde — Isle of Bute — Rothesay Bay — Spoil ground.**

Source: Clydeport Operations Limited

**Chart: SC5906-18 (plan B, Rothesay Bay) ETRS89 DATUM**

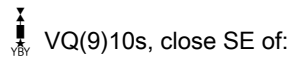
Insert circular limit of spoil ground, radius 1.35 cables, centred on:  $55^{\circ} 51' .00N. , 5^{\circ} 03' .00W.$

**L2621/09 SCOTLAND — Firth of Clyde — Lower Loch Fyne — East Loch Tarbert — Sgeir Bhuidhe South-westwards — Buoy. Light-beacon.**

Source: Northern Lighthouse Board

**Chart: SC5906-17 (plan B, East Loch Tarbert) ETRS89 DATUM**

Insert   $55^{\circ} 52' .02N. , 5^{\circ} 24' .58W.$

Delete   $(a)$  above

**L3836/09 SCOTLAND — West Coast — Approaches to the Firth of Clyde — Sanda Island Eastwards — Paterson's Rock — Beacon.**

Source: Northern Lighthouse Board

**Chart: SC5906-16 (plan A, Sanda Island) ETRS89 DATUM**

Delete   $55^{\circ} 17' .02N. , 5^{\circ} 32' .53W.$

**L6085/09 SCOTLAND — West Coast — Kyles of Bute — Burnt Islands — Depths. Drying height.**

Source: Clydeport Operations Ltd

**Chart: SC5906-10 ETRS89 DATUM**

Substitute depth  $2_3$  enclosed by 5m contour for depth  $3$  enclosed by  
5m contour

55° 55' ·69N. , 5° 10' ·87W.

**Chart: SC5906-20 (plan A, Kyles of Bute) ETRS89 DATUM**

Insert depth  $2_3$  55° 55' ·43N. , 5° 10' ·43W.

Substitute depth  $2_3$  enclosed by 5m contour for depth  $3$  and  
associated 5m contour

55° 55' ·69N. , 5° 10' ·87W.

depth  $0_3$  for depth  $0_7$

55° 55' ·78N. , 5° 10' ·50W.

**Chart: SC5906-20 (plan B, Burnt Islands) ETRS89 DATUM**

Insert depth  $3_4$  (a) 55° 55' ·575N. , 5° 10' ·694W.

depth  $2_3$  and extend 5m contour N to enclose (b) 55° 55' ·431N. , 5° 10' ·430W.

depth  $0_3$  55° 55' ·781N. , 5° 10' ·501W.

drying height  $0_7$  enclosed by low water line 55° 55' ·775N. , 5° 10' ·540W.

depth  $0_5$  and extend 2m contour E to enclose (c) 55° 55' ·751N. , 5° 10' ·450W.

Delete depth  $4_3$ , adjacent to: (a) above

depth  $2_3$ , adjacent to: (b) above

depth  $1_2$ , close W of: (c) above

---

**L6913/09 SCOTLAND — Firth of Clyde — Inchmarnock Water — Port  
a'Chruidh — Light. Landmark.**

Source: Northern Lighthouse Board

**Chart: SC5906-3 ETRS89 DATUM**

Delete ★ Iso.R.10M & Oc(2)Y.24M (occas) 55° 46' ·71N. , 5° 19' ·06W.

**Chart: SC5906-14 ETRS89 DATUM**

Delete ★ Iso.R.10M & Oc(2)Y.24M (occas) 55° 46' ·71N. , 5° 19' ·06W.

---

**L828/10 SCOTLAND — West Coast — Firth of Clyde — Rothesay Sound and  
Kames Bay — Light. Breakwater. Mooring buoy.**

Source: Briggs Marine & Port Bannatyne Marine Ltd.

**Chart: SC5906-18 (plan B, Rothesay Bay) ETRS89 DATUM**

Move  S/M(1), from: 55° 51' ·35N. , 5° 02' ·96W.

to: 55° 51' ·38N. , 5° 02' ·92W.

---

**Notices to Mariners - Weekly Edition 07/2010 SCOTLAND — West Coast,  
Firth of Clyde, Hunterston Channel and Rothesay Sound — Chart 1867 — New  
Edition Announcement.**

**Chart SC5906·18 WGS84 DATUM**

The following changes were published in the new edition of chart 1867, which is the source chart for the above Tough Chart page:

*Includes significant safety-related information as follows: changes to depths in Rothesay Harbour from the latest Argyll and Bute Council surveys and changes to coastline in Rothesay and Port Bannatyne. Mariners should therefore navigate with caution on page 5906·18 and be aware that any subsequent Notices to Mariners applied to this page are issued for information only.*

These changes will be included in the next new edition of SC5906.


---

**L957/10 SCOTLAND — West Coast — Firth of Clyde — Dunoon Bank — Buoy.**

Source: Clydeport

*Note:* Former Notice L1279(T)/09 is cancelled

**Chart: SC5906·19 (plan B, Approaches to Holy Loch) ETRS89 DATUM**

Insert  Fl. Y. 5s 55° 56' ·70N. , 4° 54' ·24W.

---

**L2369/10 SCOTLAND — West Coast — Approaches to the Firth of Clyde — Sanda Island — Paterson's Rock Southwards — Automatic Identification System.**

Source: Northern Lighthouse Board Notice 13/10

**Chart: SC5906·1 ETRS89 DATUM**

Insert Automatic Identification System, *A/S*, at light-buoy 55° 16' ·91N. , 5° 32' ·47W.

**Chart: SC5906·16 (plan A, Sanda Island) ETRS89 DATUM**

Insert Automatic Identification System, *A/S*, at light-buoy 55° 16' ·91N. , 5° 32' ·47W.

---

**L3127/10 SCOTLAND — West Coast — Firth of Clyde — Loch Striven — Brackley Point Southwards — Marine farm.**

Source: Scottish Government

**Chart: SC5906·3 ETRS89 DATUM**

Insert  55° 54' ·52N. , 5° 03' ·20W.

---

Note: Blocks and Notes for the current edition of this product are available as waterproof vinyl labels, printed specifically for use with Tough Charts. Please email [customerservices@ukho.gov.uk](mailto:customerservices@ukho.gov.uk) or telephone 01823 723366 to request copies. There is no additional charge for this service.