

**Admiralty Tough Chart 5**  
**SC5905 Chichester to Dungeness**

The Notices to Mariners (NMs) listed below apply to the latest edition of Tough Chart 5 (SC5905) (1<sup>st</sup> Edition) published on 23<sup>rd</sup> August 2007.

---

Note: Blocks and Notes for the current edition of this product are available as waterproof vinyl labels, printed specifically for use with Tough Charts. Please email [customerservices@ukho.gov.uk](mailto:customerservices@ukho.gov.uk) or telephone 01823 723366 to request copies. There is no additional charge for this service.

---

**~~L4782(T)/05 ENGLAND — South Coast — Eastbourne — Sovereign Harbour — Channel depths.~~**

Source: Sovereign Harbour Marine Manager

- ~~1. The depths in the entrance channel (50° 47' .34N. , 0° 20' .10E. ) are reduced by up to 1 metre. Contact Sovereign Harbour Office for further information.~~

**~~Chart(s) affected — SC5905-11, SC5905-20~~**

---

**L3372/07 ENGLAND — South Coast — Chichester Harbour — Black Point South-south-eastwards — Landmark. Light.**

Source: Chichester Harbour Conservancy Notice 15/07

**Chart: SC5905-16 WGS84 DATUM**

Substitute      ⚓ FS for      ★ F(Apr-Nov) FS      50° 47' .11N. , 0° 56' .20W.

---

**L3762/07 ENGLAND — South Coast — Dungeness South-eastwards — Fog signal.**

Source: Trinity House Notice 35/07

**Chart: SC5905-15 WGS84 DATUM**

Delete      fog signal, *Bell*, at *CS3* light-buoy      50° 52' .04N. , 1° 02' .20E.

---

**~~L1056(T)/08 ENGLAND — South Coast — Shoreham Harbour — Eastern Arm and The Canal — Prince George Lock — Works.~~**

Source: Shoreham Port Notice 2/08

- ~~1. The Prince George Lock (50° 49' .814N. , 0° 14' .260W). will be out of operation, for approximately six months, due to a structural failure.~~
- ~~2. Throughout this period passage to and from The Canal, will be through Prince Philip Lock (50° 49' .795N. , 0° 14' .260W)., and therefore the movement of small craft may be delayed.~~
- ~~3. Mariners will be advised when Prince George Lock returns to normal operations.~~

**~~Charts affected — SC5605-4 (plan A, Worthing to Newhaven), SC5605-14 (plan B, Shoreham Harbour Eastern Arm), SC5905-18~~**

---

**L1487/08 ENGLAND — South Coast — Approaches to Newhaven — Seaford Road South-westwards — Buoy.**

Source: Channel Coast Observatory

**Chart: SC5905·8 ETRS89 DATUM**

Insert  *Fl(5)Y.20s* 50° 45' ·92N. , 0° 04' ·40E.

**Chart: SC5905·9 ETRS89 DATUM**

Insert  *Fl(5)Y.20s* 50° 45' ·92N. , 0° 04' ·40E.

---

**L1488/08 ENGLAND — South Coast — Dungeness — Buoyage.**

Source: CEFAS

**Chart: SC5905·15 ETRS89 DATUM**

Insert  *Fl(5)Y.20s (2 buoys)* 50° 54' ·18N. , 0° 58' ·44E.

---

**~~L2418(T)/08 ENGLAND — South Coast — Approaches to Chichester Harbour — Chichester Bar — Light-beacons.~~**

Source: Chichester Harbour Conservancy

- ~~1. — Work is in progress to replace the existing West Pole and Chichester Bar light beacons in the approaches to Chichester Harbour as follows: a) A new West Pole beacon, Fl.R.5s14m7M, with a red can topmark, has been established in position 50° 45' ·45N. , 0° 56' ·59W. The existing West Pole beacon in position 50° 45' ·72N. , 0° 56' ·49W. will be removed and, until then, the Fl.WR.5s10m7/5M sector light has been replaced by a temporary Fl(2)5s7m3M light. b) A new Bar beacon is under construction in position 50° 46' ·02N. , 0° 56' ·38W. , and displays a temporary Fl(2)R.10s4m3M light. The existing Chichester Bar beacon will be removed and, until then, the Fl(2)R.10s7m4M light has been replaced by a temporary Fl(2)10s light.~~
- ~~2. — Mariners are advised to contact Chichester Harbour Conservancy for the latest information.~~
- ~~3. — SC5600, SC5901, SC5905, 2037, 2045, 2450 and 3418 will be updated when work is complete.~~

**Charts affected — SC5600·1, SC5600·2, SC5600·3, SC5600·16 (plan A, Langstone Harbour), SC5600·17, SC5600·20, SC5901·8, SC5901·17, SC5901·18, SC5905·1, SC5905·16, 2037, 2045, 2450, 3418.**

**This Notice has been superseded by later Notice L3826(P)/08**

---

**L3604/08 ENGLAND — South Coast — Rye Bay — Buoy.**

Source: Rye Harbour Sailing Club

**Chart: SC5905·14 ETRS89 DATUM**

Insert  *(Apr-Oct)* 50° 54' ·53N. , 0° 45' ·43E.

**Chart: SC5905·20 (plan C, Rye Harbour) ETRS89 DATUM**

Insert  *(Apr-Oct)* 50° 54' ·53N. , 0° 45' ·43E.

---

**~~L3826(P)/08 ENGLAND — South Coast — Approaches to Chichester Harbour — Chichester Bar — Light-beacons.~~**

Source: Chichester Harbour Conservancy

- ~~1. — The following light beacons have been established:~~

<i>Name</i>	<i>Type</i>	<i>Characteristics</i>	<i>Position</i>
West Pole	Port hand mark with red can topmark	Fl.R.5s14m7M	<del>50° 45' 45N., 0° 56' 59W.</del>
Bar	Port hand mark with red can topmark	Fl(2)R.10s10m4M	<del>50° 46' 023N., 0° 56' 380W.</del>

- ~~2. The former charted West Pole (50° 45' 71N., 0° 56' 49W.) and Chichester Bar (50° 45' 92N., 0° 56' 46W.) light beacons have been removed.~~
- ~~3. These and other changes will be included in the next New Edition of Chart 3418 due to be published later this year and the next New Editions of SC2037, SC2045, SC2450, SC600, SC5901 and SC5905.~~
- ~~4. Former Notice L2418(T)/08 is cancelled.~~

~~**Charts affected — SC2037, SC2045, SC2450, SC3418, SC5600-1, SC5600-3, SC5600-17, SC5600-20, SC5901-8, SC5901-17, SC5901-18, SC5905-1, SC5905-16**~~

**L5398/08 ENGLAND — South Coast — Selsey Bill Westwards — Buoy.**

Source: Channel Coastal Observatory

**Chart: SC5905-1 ETRS89 DATUM**

Insert  *Fl(5)Y.20s* 50° 43' 38N. , 0° 50' 35W.

**Chart: SC5905-2 ETRS89 DATUM**

Insert  *Fl(5)Y.20s* 50° 43' 38N. , 0° 50' 35W.

**L5595/08 ENGLAND — South Coast — Dungeness South-westwards — Rye Bay — Buoy.**

Source: Channel Coastal Observatory

**Chart: SC5905-14 ETRS89 DATUM**

Insert  *Fl(5)Y.20s* 50° 51' 08N. , 0° 47' 43E.

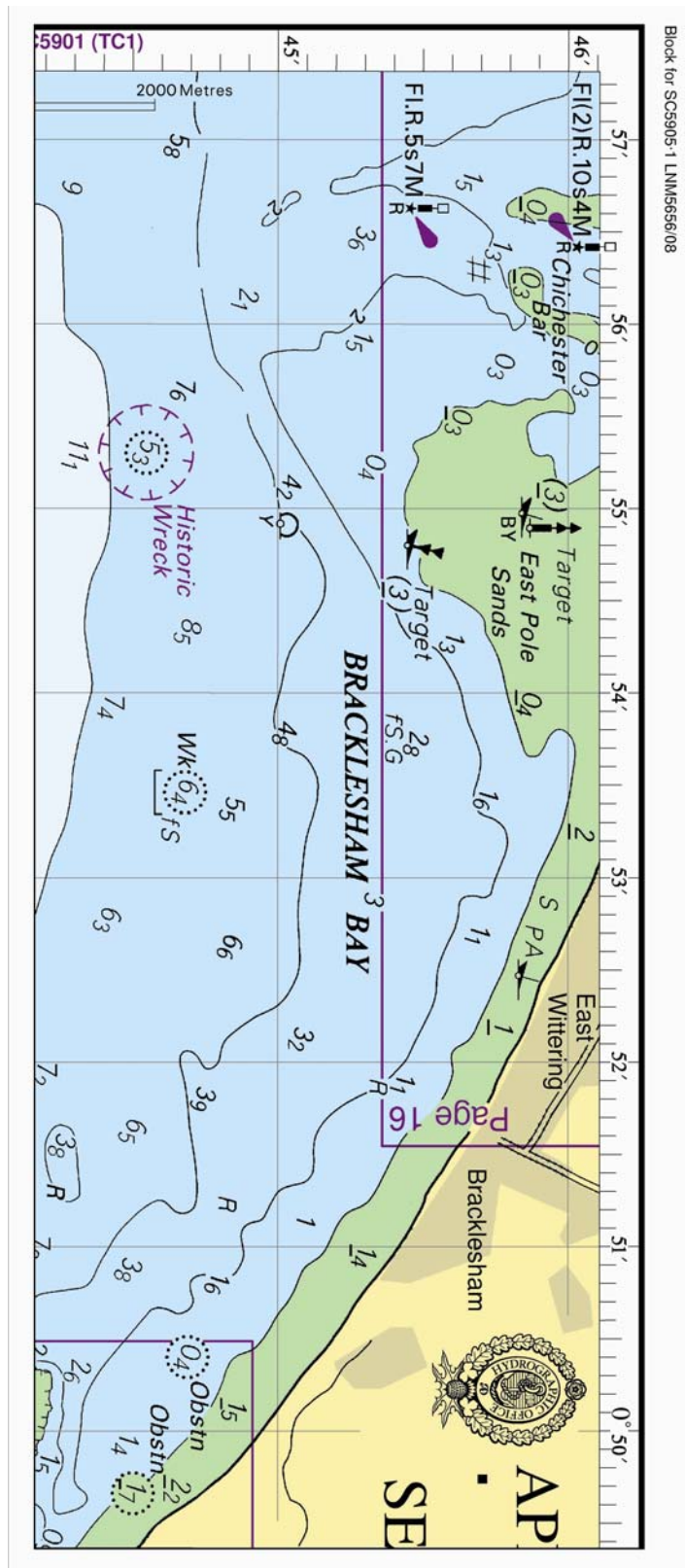
**L5656/08 ENGLAND — South Coast — Approaches to Chichester Harbour — Light-beacons. Recommended track. Leading line. Depths. Tidal gauges.**

Source: Chichester Harbour Conservancy

*Note:* This update and other amendments have been included in a New Edition of Chart 3418 published 16 October 2008.

**Chart: SC5905-1 ETRS89 DATUM**

Insert the accompanying block, showing amendments to light-beacons, recommended track and depths, centred on: 50° 45' 20N. , 0° 53' 50W.



**Notices to Mariners - Weekly Edition 42/2008 ENGLAND — South Coast, Langstone and Chichester Harbours — Chart 3418 — New Edition Announcement.**

**Chart SC5905-16 WGS84 DATUM**

The following changes were published in the new edition of chart 3418, which is the source chart for the above Tough Chart page:

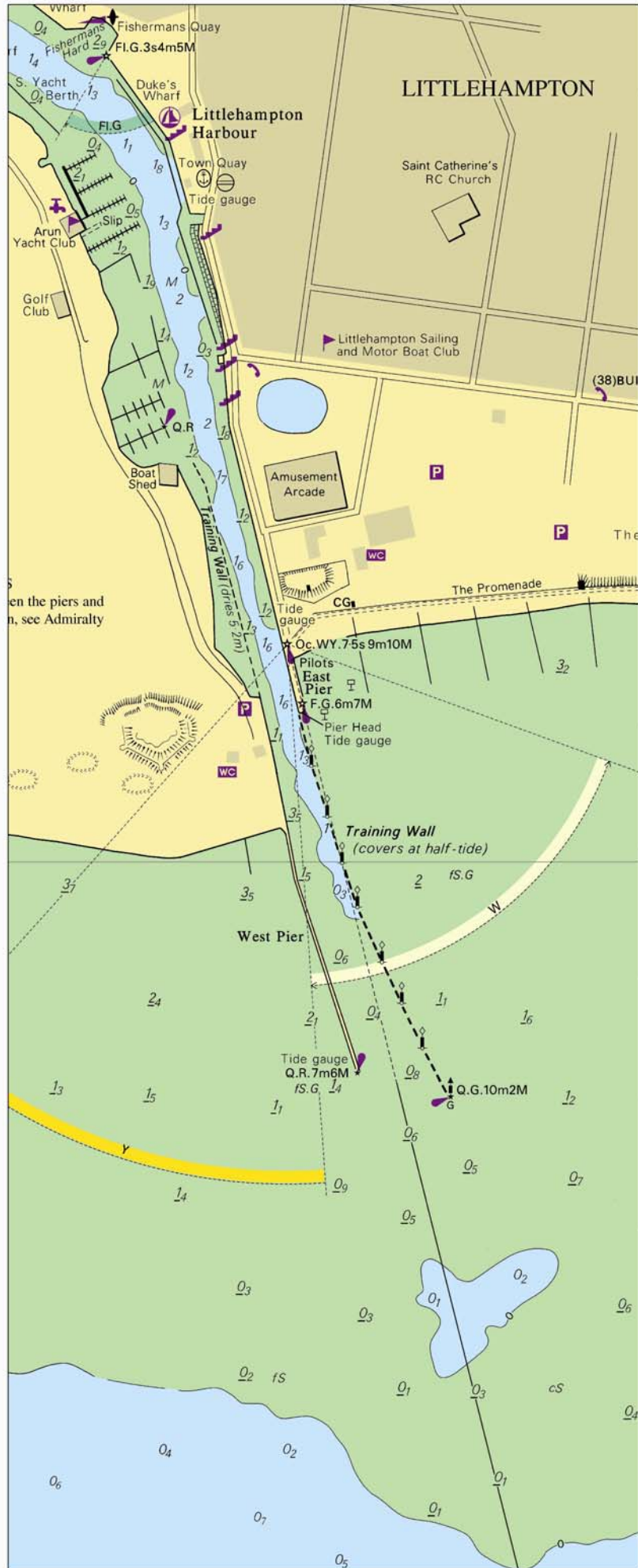




**Chart: SC5905-17 ETRS89 DATUM**

Insert the accompanying block, showing amendments to depths,  
pontoons and a light, centred on:

50° 48' ·04N. , 0° 32' ·49W.



---

**L1826/09 ENGLAND — South Coast — Shoreham — Spoil ground.**

Source: Shoreham Port Authority

**Chart: SC5905·6 ETRS89 DATUM**

Insert limit of spoil ground, pecked line, joining:       $50^{\circ} 49' \cdot 59N. , 0^{\circ} 14' \cdot 74W.$  (shore)  
 $50^{\circ} 49' \cdot 28N. , 0^{\circ} 14' \cdot 29W.$   
*(a)*  $50^{\circ} 49' \cdot 07N. , 0^{\circ} 14' \cdot 29W.$   
(existing limit)

Delete former limit of spoil ground, joining:      *(a)* above  
 $50^{\circ} 49' \cdot 07N. , 0^{\circ} 14' \cdot 81W.$   
 $50^{\circ} 49' \cdot 23N. , 0^{\circ} 14' \cdot 81W.$   
and  
 $50^{\circ} 49' \cdot 56N. , 0^{\circ} 14' \cdot 79W.$   
 $50^{\circ} 49' \cdot 56N. , 0^{\circ} 14' \cdot 31W.$   
 $50^{\circ} 49' \cdot 63N. , 0^{\circ} 14' \cdot 34W.$   
 $50^{\circ} 49' \cdot 63N. , 0^{\circ} 14' \cdot 21W.$  (Eastern limit of chart)

**Chart: SC5905·7 ETRS89 DATUM**

Insert limit of spoil ground, pecked line, joining:       $50^{\circ} 49' \cdot 59N. , 0^{\circ} 14' \cdot 74W.$  (shore)  
 $50^{\circ} 49' \cdot 28N. , 0^{\circ} 14' \cdot 29W.$   
*(a)*  $50^{\circ} 49' \cdot 07N. , 0^{\circ} 14' \cdot 29W.$   
(existing limit)

Delete former limit of spoil ground, joining:      *(a)* above  
 $50^{\circ} 49' \cdot 07N. , 0^{\circ} 14' \cdot 81W.$   
 $50^{\circ} 49' \cdot 23N. , 0^{\circ} 14' \cdot 81W.$   
and  
 $50^{\circ} 49' \cdot 56N. , 0^{\circ} 14' \cdot 79W.$   
 $50^{\circ} 49' \cdot 56N. , 0^{\circ} 14' \cdot 31W.$   
 $50^{\circ} 49' \cdot 63N. , 0^{\circ} 14' \cdot 34W.$   
 $50^{\circ} 49' \cdot 63N. , 0^{\circ} 13' \cdot 39W.$   
 $50^{\circ} 49' \cdot 56N. , 0^{\circ} 13' \cdot 39W.$   
 $50^{\circ} 49' \cdot 56N. , 0^{\circ} 11' \cdot 94W.$  (shore)

**Chart: SC5905·18 ETRS89 DATUM**

Insert limit of spoil ground, pecked line, joining:       $50^{\circ} 49' \cdot 59N. , 0^{\circ} 14' \cdot 74W.$   
(shore)  
 $50^{\circ} 49' \cdot 28N. , 0^{\circ} 14' \cdot 29W.$   
 $50^{\circ} 49' \cdot 03N. , 0^{\circ} 14' \cdot 29W.$   
*(a)*  $50^{\circ} 49' \cdot 03N. , 0^{\circ} 14' \cdot 22W.$   
(existing limit)  
and

(b) 50° 49' ·07N. , 0° 13' ·38W.

(existing limit)

50° 49' ·21N. , 0° 13' ·39W.

50° 49' ·19N. , 0° 13' ·09W.

50° 49' ·44N. , 0° 13' ·09W.

50° 49' ·37N. , 0° 12' ·49W.

(Eastern limit of chart)

Delete former limit of spoil ground, joining:

50° 49' ·53N. , 0° 14' ·80W.

(shore)

(a) above

and

(b) above

50° 49' ·07N. , 0° 12' ·49W.

(Eastern limit of chart)

---

**L2088/09 ENGLAND — South Coast — Selsey Bill South-eastwards — Outer Owers — Buoy.**

Source: Trinity House

**Chart: SC5905·2 ETRS89 DATUM**

Amend fog signal at *Owers* light-buoy to, *Bell*

50° 38' ·59N. , 0° 41' ·09W.

**Chart: SC5905·3 ETRS89 DATUM**

Amend fog signal at *Owers* light-buoy to, *Bell*

50° 38' ·59N. , 0° 41' ·09W.

---

**L2701/09 ENGLAND — South Coast — Rye Harbour South-eastwards — Buoy.**

Source: Rye Harbour Sailing Club

**Chart: SC5905·14 ETRS89 DATUM**

Insert

 (Apr-Oct)

50° 55' ·40N. , 0° 47' ·99E.

**Chart: SC5905·20 (plan C, Rye Harbour) ETRS89 DATUM**

Insert

 (Apr-Oct)

50° 55' ·40N. , 0° 47' ·99E.

---

**L3934/09 ENGLAND — South Coast — Newhaven Harbour — Railway Quay to No 1 RoRo Berth Westwards — Drying heights. Depth.**

Source: Newhaven Port Authority

**Chart: SC5905·19 ETRS89 DATUM**

Insert drying height 1 enclosed by 0m contour

50° 47' ·420N. , 0° 03' ·249E.

depth 2 enclosed by 2m contour

50° 47' ·291N. , 0° 03' ·274E.

---

**L5657/09 ENGLAND — South Coast — Approaches to Portsmouth and Chichester — Spit Sand Fort Southwards, Nab Tower Southwards and Chichester Bar Westwards — Buoyage.**

Source: Emu Limited

**Chart: SC5905-1 ETRS89 DATUM**

Insert  *Fl(5)Y.20s* 50° 39' ·84N. , 0° 57' ·39W.

 *Fl(5)Y.20s (3 buoys)* 50° 45' ·80N. , 0° 57' ·10W.

**Chart: SC5905-16 ETRS89 DATUM**

Insert  *Fl(5)Y.20s (3 buoys)* 50° 45' ·80N. , 0° 57' ·10W.

---

**L1088 (P)/10 ENGLAND — South Coast — Newhaven Harbour — Dredged depths.**

Source: Newhaven Port Authority

1. The dredged depths within Newhaven Harbour have been changed as follows (ETRS89 Datum):

<i>Location</i>	<i>New depth</i>	<i>Position</i>
Passenger Terminal	6·0 metres	50° 47' ·267N. , 0° 03' ·345E.
East Quay	5·0 metres	50° 47' ·136N. , 0° 03' ·400E.
Harbour Turning Area	6·0 metres	50° 47' ·151N. , 0° 03' ·368E.

2. These and other changes will be included in a New Edition of Chart 2154 in preparation and the next New Editions of SC5605 and SC5905.

**Charts affected: SC5605-13 A, SC5905-19**

---

**L1523/10 ENGLAND — South Coast — Isle of Wight Eastwards — Nab Channel and Approaches — Depths. Radio reporting point. Wrecks. Obstruction. Foul. Legend.**

Source: Maritime and Coastguard Agency & ABP Southampton

**Chart: SC5905-1 ETRS89 DATUM**

Delete Legend, **NAB CHANNEL Call Southampton VTS for clearance to enter**, centred on: 50° 40' ·50N. , 0° 55' ·50W.

---

**L1651/10 ENGLAND — South Coast — Chichester Harbour — Eastoke Point Eastwards and East Head Northwards — Buoyage. Beacon. Light-beacon. Depth.**


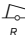
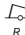



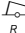
Source: Chichester Harbour Conservancy

**Chart: SC5905-16 ETRS89 DATUM**

Insert  *Q.R Eastoke* (a) 50° 46' ·68N. , 0° 56' ·11W.

 *Fl.G.5s Snowhill* (b) 50° 47' ·50N. , 0° 54' ·33W.

 *Fl.R. 10s Sandhead* 50° 47' ·67N. , 0° 54' ·25W.

Move	 <i>F(4)G. 10s E Head Spit</i> , from:	50° 47' ·41N. , 0° 54' ·90W.
	to:	50° 47' ·43N. , 0° 54' ·84W.
Substitute	 <i>F(4)R. 10s Copyhold</i> for  <i>Copyhold</i>	50° 47' ·51N. , 0° 54' ·93W.
	 Tide gauge for  Q.R.2m Eastoke Tide	
	gauge, close WSW of:	(a) above
	depth $1_9$ for depth $1_3$	(c) 50° 47' ·54N. , 0° 54' ·51W.
Delete	 <i>F1.R. 10s NE Sandhead</i> , close NNW of:	(b) above
	 <i>F(4)R. 10s Sandhead</i> , close SW of:	(c) above

## L2385/10 ENGLAND — South Coast — Approaches to Littlehampton — Pilot boarding place.

Source: Littlehampton Harbour Board

### Chart: SC5905·5 ETRS89 DATUM

Move	 , from:	50° 45' ·96N. , 0° 32' ·80W.
	to:	50° 46' ·60N. , 0° 32' ·60W.

## Notices to Mariners - Weekly Edition 20/2010 ENGLAND — South Coast, Newhaven Harbour — Chart 2154 — New Edition Announcement.

### Chart SC5905·19 WGS84 DATUM

The following changes were published in the new edition of chart 2154, which is the source chart for the above Tough Chart page.

*This new edition includes changes to dredged areas and depths from the latest Newhaven Port Authority and British Government surveys.*

*Mariners should therefore navigate with caution on page SC5905·19 and be aware that any subsequent Notices to Mariners applied to this page are issued for information only.*

These changes will be included in the next new edition of SC5905.

## Notices to Mariners - Weekly Edition 25/2010 ENGLAND — South Coast, Langstone and Chichester Harbours — Chart 3418 — New Edition Announcement.

### Chart SC5905·16 WGS84 DATUM

The following changes were published in the new edition of chart 3418, which is the source chart for the above Tough Chart page

*This new edition includes depths from the latest commercial surveys.*

*Mariners should therefore navigate with caution on page SC5905·16 and be aware that any subsequent Notices to Mariners applied to this page are issued for information only.*

These changes will be included in the next new edition of SC5905.

---

**L3146/10 ENGLAND — South Coast — Chichester Harbour — Chichester Bar  
West-south-westwards — Buoyage.**

Source: Chichester Harbour Conservancy

*Note:* This update has been included in a New Edition of Chart 3418 published 24 June 2010.

**Chart: SC5905·1 ETRS89 DATUM**

Delete  *Fl(5)Y.20s (3 buoys)* 50° 45' ·80N. , 0° 57' ·10W.

**Chart: SC5905·16 ETRS89 DATUM**

Delete  *Fl(5)Y.20s (3 buoys)* 50° 45' ·80N. , 0° 57' ·10W.

---

Note: Blocks and Notes for the current edition of this product are available as waterproof vinyl labels, printed specifically for use with Tough Charts. Please email [customerservices@ukho.gov.uk](mailto:customerservices@ukho.gov.uk) or telephone 01823 723366 to request copies. There is no additional charge for this service.