

Admiralty Tough Chart 4
SC5904 Falmouth to Plymouth

The Notices to Mariners (NMs) listed below apply to the latest edition of Tough Chart 4 (SC5904) (1st Edition) published on 26th April 2007.

Note: Blocks and Notes for the current edition of this product are available as waterproof vinyl labels, printed specifically for use with Tough Charts. Please email customerservices@ukho.gov.uk or telephone 01823 723366 to request copies. There is no additional charge for this service.

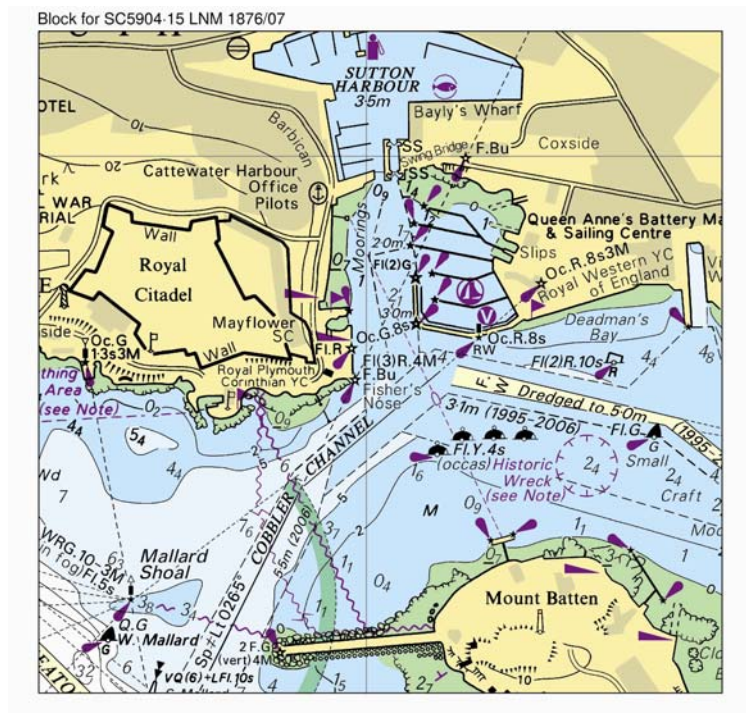
L1876/07 ENGLAND — South Coast — Plymouth — Cobbler Channel and Cattewater — Lights. Dredged depth. Buoy.

Source: Cattewater Harbour Commissioners

Chart: SC5904-15 ETRS89 DATUM

Insert the accompanying block, showing amendments to lights,
dredged depth and buoy, centred on:

50° 21' ·83N. , 4° 07' ·97W.



L1877/07 ENGLAND — South Coast — Plymouth — Millbay Docks — Light-beacon. Light.

Source: ABP Millbay Docks

Chart: SC5904-15 ETRS89 DATUM

Insert  FI(2)5s Dn 50° 21' ·786N. , 4° 09' ·195W.

Delete  50° 21' ·88N. , 4° 09' ·38W.

L2309/07 ENGLAND — South Coast — Falmouth — Inner Harbour — Empire Jetty and King's Jetty — Works.

Source: A&P Falmouth

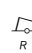
Chart: SC5904-10 ETRS89 DATUM

Insert  legend, Works in progress (2007), centred on: 50° 09' ·31N. , 5° 03' ·50W.

L2843/07 ENGLAND — South Coast — Approaches to Falmouth — Carrick Roads — Cross Road Northwards — Buoy.

Source: Falmouth Harbour Commissioners Notice 3/07




Chart: SC5904-11 ETRS89 DATUM

Move  *Fl.R.4s Northbank* from: 50° 10' ·364N. , 5° 02' ·127W.
to: 50° 10' ·338N. , 5° 02' ·260W.

L4035/07 ENGLAND — South Coast — Plymouth — Cattewater — Mooring buoys.

Source: Cattewater Harbour Commission

Chart: SC5904-15 ETRS89 DATUM

Insert  (3 buoys) 50° 21' ·602N. , 4° 07' ·195W.
Delete  (a) 50° 21' ·60N. , 4° 07' ·31W.
 , close E of: (a) above

L4533/07 ENGLAND — South Coast — Carrick Roads — Cross Road — Mooring buoy.

Source: Falmouth Harbour Commissioners Notice 12/07

Chart: SC5904-11 ETRS89 DATUM

Substitute  *Fl.Y.5s Cross Roads* for  *Cross Roads* 50° 10' ·269N. , 5° 01' ·994W.

Notices to Mariners - Weekly Edition 44/2007 ENGLAND — South Coast, Plymouth Sound — Chart 30 — New Edition Announcement.

Charts SC5904-14, SC5904-15 WGS84 DATUM

Mariners should navigate with caution as the following changes were published in the new edition of chart 30, which is the source chart for the above folio sheets and Tough Chart pages:

Includes changes to depths in Jennycliff Bay and from Cattewater to The Narrows, updated from British Government and commercial surveys. Dredged area dates have also been amended.

These changes will be included in the next new edition of SC5904.

**~~L5685(T)/07 ENGLAND — South Coast — Falmouth — Inner Harbour —
Empire Jetty and King's Jetty — Light. Buoy. Works.~~**
Source: A & P Falmouth

1. ~~Empire Jetty and King's Jetty are in the process of being demolished. Due to the existence of underwater obstructions, mariners should not pass east of the following navigational aids, which have been temporarily established: a) Port hand can light buoy, *Fl.R.2s*, in position 50° 09' 270N., 5° 03' 600W. b) Light, *Fl.10s*, in position 50° 09' 330N., 5° 03' 560W.~~

~~Charts affected — SC32, SC5602.5 (plan A, Falmouth Harbour), SC5904.10~~

L385/08 ENGLAND — South Coast — Plymouth Sound — Breakwater Fort Westwards — Obstruction.

Source: UK Hydrographic Office

Chart: SC5904.14 ETRS89 DATUM

Substitute  *Obstn* for  *Obstn* 50° 20' 118N., 4° 09' 399W.

L564/08 ENGLAND — South Coast — Plymouth Sound — Western Channel — Wreck.

Source: UK Hydrographic Office

Chart: SC5904.14 ETRS89 DATUM

Substitute  *Wk* for  *Wk* 50° 20' 137N., 4° 09' 574W.

L1029/08 ENGLAND — South Coast — Plymouth Sound - Eastern and Western Channel — Depths. Light.

Source: UKHO

Chart: SC5904.13 (plan B, Cawsand Bay) ETRS89 DATUM

Insert	depth 5_7	(a) 50° 20' 453N., 4° 09' 820W.
	depth 10_5	(b) 50° 20' 115N., 4° 09' 741W.
Substitute	depth 4_6 enclosed by 5m contour for depth 5_2	50° 20' 376N., 4° 10' 035W.
	depth 4_3 enclosed by 5m contour for depth 4_9 enclosed by 5m contour	50° 20' 350N., 4° 10' 130W.
Delete	depth 5_7 , close S of:	(a) above
	depth 11_2 , adjacent to:	(b) above

Chart: SC5904.14 ETRS89 DATUM

Insert	depth 5_7	(a) 50° 20' 453N., 4° 09' 820W.
	depth 9_7 enclosed by 10m contour	(b) 50° 20' 172N., 4° 09' 145W.
	depth 10_5	(c) 50° 20' 115N., 4° 09' 741W.
Substitute	depth 4_6 enclosed by 5m contour for depth 5_2	50° 20' 376N., 4° 10' 035W.
	depth 4_3 enclosed by 5m contour for depth 4_9	50° 20' 350N., 4° 10' 130W.

enclosed by 5m contour

depth 7₅ for depth 7₅

50° 20' ·529N. , 4° 09' ·280W.

depth 9 for depth 9₄

50° 20' ·182N. , 4° 08' ·195W.

Delete depth 5₇, close S of:

(a) above

depth 10₁, close E of:

(b) above

depth 11₂, adjacent to:

(c) above

L1030/08 ENGLAND — South Coast — Plymouth Sound — Plymouth Breakwater Southwards — Cattedown — Depths. Light.

Source: UKHO

Chart: SC5904·8 ETRS89 DATUM

Insert depth 5₄

(a) 50° 19' ·59N. , 4° 08' ·48W.

Delete depth 4₆ enclosed by 5m contour, adjacent to:

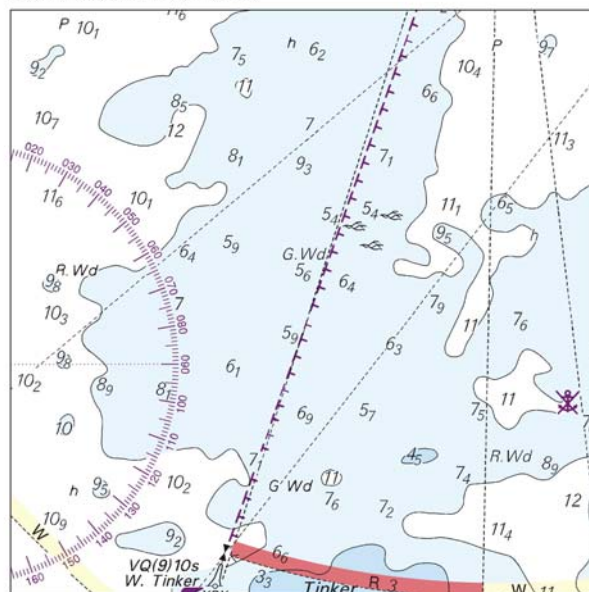
(a) above

Chart: SC5904·14 ETRS89 DATUM

Insert the accompanying block, showing amendments to depths, centred on:

50° 19' ·51N. , 4° 08' ·52W.

Block for SC5904·14 LNM 1030/08



L1368/08 ENGLAND — South Coast — Plymouth Sound — Hamoaze, Looking Glass Eastwards — Plymouth Breakwater — Ravenness Point Northwards — Cautionary note. Barge. Buoyage. Maritime limits. Depths. Legend.

Source: Queen's Harbour Master (Plymouth)

Chart: SC5904·14 ETRS89 DATUM

Substitute the accompanying note, **DIVING AREA**, for

existing note **DIVING AREAS**, centred on:




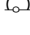
50° 19' ·60N. , 4° 06' ·95W.

Delete	limit of diving area, pecked line, and associated legend, <i>Diving Area (see Note)</i> , joining:	50° 20' ·026N. , 4° 09' ·030W. (shore)
		50° 20' ·125N. , 4° 09' ·023W.
		50° 20' ·119N. , 4° 08' ·843W.
		50° 20' ·014N. , 4° 08' ·847W. (shore)
	legend, SS (Diving), centred on:	50° 20' ·070N. , 4° 08' ·861W.

DIVING AREA

All vessels should proceed with caution within and close to the diving area. Diving signals are displayed from Bovisand Pier (50° 20' ·2N. , 4° 07' ·7W.).

Chart: SC5904·15 ETRS89 DATUM

Delete	Note DIVING AREA , centred on:	50° 22' ·15N. , 4° 06' ·70W.
Delete	diving barge, centred on:	(a) 50° 21' ·209N. , 4° 10' ·032W.
	 , close NNW of:	(a) above
	 , close W of:	(a) above
	 , close E of:	(a) above
	 , close S of:	(a) above
	limit of diving area, pecked line, and associated legend, <i>Diving Area (see Note)</i> , joining:	50° 21' ·188N. , 4° 10' ·129W. (shore)
		50° 21' ·248N. , 4° 10' ·051W.
		50° 21' ·152N. , 4° 09' ·872W.
		50° 21' ·061N. , 4° 10' ·013W. (shore)

L2136/08 ENGLAND — South Coast — Plymouth Sound — Redding Point Eastwards and Duke Rock — Depths.

Source: UKHO

Chart: SC5904·14 ETRS89 DATUM

Insert	depth 5_2	50° 20' ·658N. , 4° 09' ·667W.
	depth 4_4 enclosed by 5m contour	50° 20' ·483N. , 4° 09' ·929W.
Substitute	depth 4_8 enclosed by 5m contour for depth 5_7	50° 20' ·303N. , 4° 08' ·162W.
	depth 4_6 enclosed by 5m contour for depth 5_2	50° 20' ·413N. , 4° 09' ·931W.

Chart: SC5904·15 ETRS89 DATUM

Substitute	depth 5_7 with seabed character, <i>R</i> , for depth 5_7 with seabed character, <i>R</i>	50° 20' ·810N. , 4° 09' ·219W.
------------	---	--------------------------------

L2494/08 ENGLAND — South Coast — Plymouth — Millbay Docks — West Wharf — Landmarks. Legends.

Source: Queen's Harbour Master, Plymouth

Chart: SC5904-15 ETRS89 DATUM

Delete symbol, building and flagstaff, Tr(61)SILO, centred on: 50° 21' ·80N. , 4° 09' ·37W.

L4616/08 ENGLAND — South Coast — Plymouth — Approaches to Sutton Harbour — Lights. Pontoons. Legend.

Source: Harbour Master, Cattewater Harbour Commissioners

Chart: SC5904-15 ETRS89 DATUM

Insert



(a) 50° 21' ·873N. , 4° 08' ·016W.

(b) 50° 21' ·928N. , 4° 08' ·010W.

pontoon, single firm line, joining:

(a) above

(b) above

and

50° 21' ·933N. , 4° 08' ·044W.

(shore)

50° 21' ·906N. , 4° 08' ·012W.

(pontoon)

Delete legend, *Moorings*, centred on:

50° 21' ·93N. , 4° 08' ·01W.

~~**L4748/08 ENGLAND — South Coast — Approaches to Plymouth — Plymouth Sound South-westwards — Buoy. Automatic Identification System.**~~

~~Source: Plymouth Marine Laboratory~~

~~**Chart: SC5904-8 ETRS89 DATUM**~~

~~Insert~~

~~(a) 50° 15' ·00N. , 4° 13' ·02W.~~~~Automatic Identification System, *AIS*, at light-buoy~~~~(a) above~~

This Notice has been superseded by Notice L4882(T)/08

~~**L4882(T)/08 ENGLAND — South Coast — Approaches to Plymouth — Plymouth Sound South-westwards — Buoy. Automatic Identification System.**~~

~~Source: Plymouth Marine Laboratory~~

- ~~1. Oceanographic data buoy, *Fl(5)Y.20s-L4 AIS*, in position 50° 15' ·00N. , 4° 13' ·02W. has been removed.~~
- ~~2. The buoy is due to be re-established in October 2008.~~
- ~~3. Notice L4748/08 refers.~~

~~**Charts affected: SC442, SC1267, SC1613, SC2655, SC2656, SC2675, SC5602-1, SC5602-4 (plan A, Fowey to Plymouth), SC5602-6 (plan A, Plymouth to**~~

~~Salcombe), SC5604-2, SC5903-1, SC5904-8~~



This Notice has been superseded by later Notice L6288/08

L6288/08 ENGLAND — South Coast — Approaches to Plymouth — Plymouth Sound South-westwards — Buoy. Automatic Identification System.

Source: Plymouth Marine Laboratory

Note: Former Notice L4882(T)/08 is cancelled.

Chart: SC5904-8 ETRS89 DATUM

Substitute  *F(4)Y.20s* for  *F(5)Y.20s L4* and associated

Automatic Identification System, *AIS*

50° 15' ·00N. , 4° 13' ·02W.

L846/09 ENGLAND — South Coast — Falmouth — Inner Harbour — Docks Basin — Jetties. Lights. Buoy. Coastline. Obstructions. Dolphin. Works. Berths. Legends.

Source: A&P Falmouth

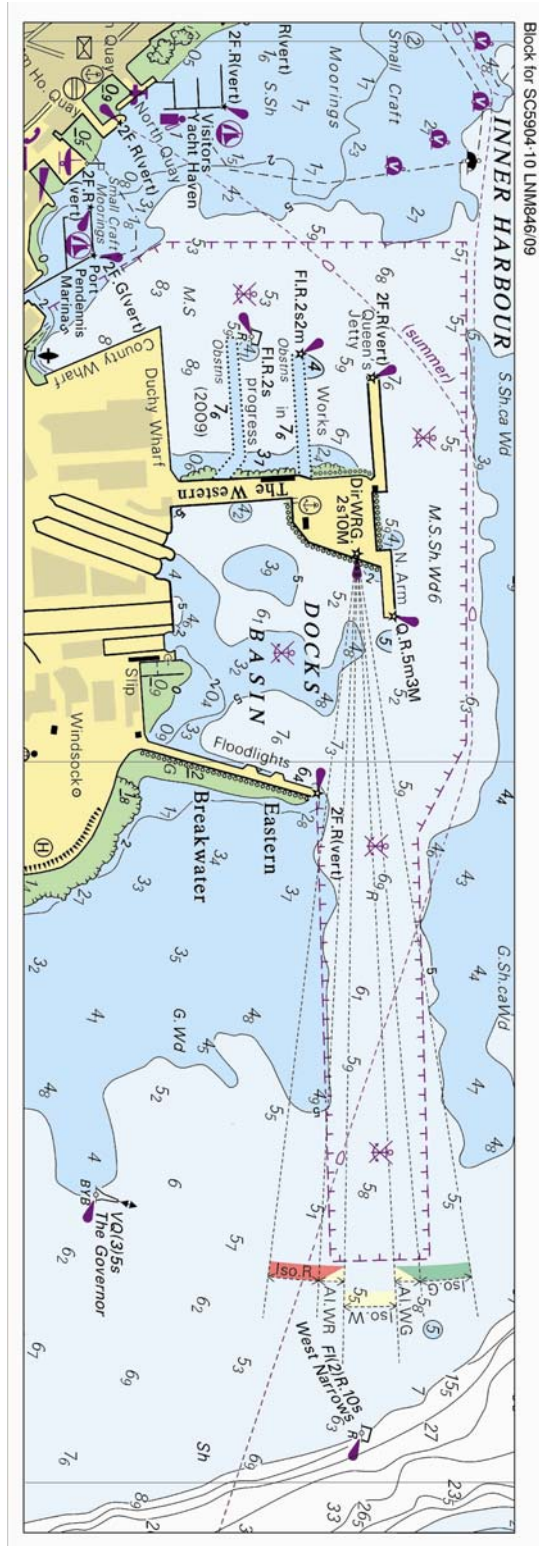
Note: Former Notice L5685(T)/07 is cancelled.

Chart: SC5904-10 ETRS89 DATUM

Insert the accompanying block, showing amendments to jetties, lights, buoy, coastline, obstructions, works and legends,

centred on:

50° 09' ·31N. , 5° 02' ·99W.



L1744/09 ENGLAND — South Coast — Falmouth — Black Rock Eastwards — Buoy.

Source: Falmouth Harbour Commissioners Notice 4/09

Chart: SC5904.1 ETRS89 DATUM

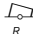



Substitute  *FLR* for  *Q(3)* 50° 08' ·68N. , 5° 01' ·74W.

Chart: SC5904·10 ETRS89 DATUM

Substitute  *FLR.2·5s* for  *Q(3)10s* 50° 08' ·68N. , 5° 01' ·74W.

L1856/09 ENGLAND — South Coast — The Manacles North-westwards — Porthallow Cove North-eastwards — Marine farm. Cautionary note.

Source: Cornish Mussels Ltd

Chart: SC5904·1 ETRS89 DATUM

Insert  50° 04' ·57N. , 5° 04' ·09W.

the accompanying note, MARINE FARMS: Reverse of Back Cover, beneath
"OVERHEAD CABLES" note.



MARINE FARMS

Marine farms exist within the area of this chart in the areas indicated. Marine farms may be marked by lit or unlit buoys or beacons. Mariners are advised to avoid these structures and their associated moorings.

L2073/09 ENGLAND — South Coast — Approaches to Plymouth — Plymouth Sound South-westwards — Buoy. Automatic Identification System.

Source: Plymouth Marine Laboratory

Chart: SC5904·8 ETRS89 DATUM

Substitute  *FL(5)Y.20s L4* for  *FL(4)Y.20s* (a) 50° 15' ·00N. , 4° 13' ·02W.

Insert Automatic Identification System, *AIS*, at light-buoy (a) above

L2487/09 ENGLAND — South Coast — Falmouth Eastwards — Obstruction.

Source: UKHO

Note: This update will be included in a New Edition of Chart 2565 to be published 21 May 2009.

Chart: SC5904·2 ETRS89 DATUM

Insert  *Obstn* 50° 09' ·89N. , 4° 52' ·15W.

Chart: SC5904·3 ETRS89 DATUM

Insert  *Obstn* 50° 09' ·89N. , 4° 52' ·15W.

L2795/09 ENGLAND — South Coast — Cornwall — Helford River — August Rock — Buoy.

Source: Helford River Committee

Note: This update has been included in a New Edition of Chart 2565 published on 21 May 2009.

Chart: SC5904·1 ETRS89 DATUM

Substitute  *Fl.G.5s (Apr-Oct)* for  *(seasonal)* 50° 06' ·1N. , 5° 05' ·0W.

Chart: SC5904·9 ETRS89 DATUM

Insert  *Fl.G.5s August Rk (Apr-Oct)* (a) 50° 06' ·140N. , 5° 04' ·970W.

Delete  *August Rk (seasonal) PA*, close SSE of: (a) above

Office Correction ENGLAND — South Coast — Plymouth Sound — Redding Point Eastwards and Duke Rock — Depths.

Source: UKHO (26/05/2009)

Chart: SC5904·13 (plan A, Cawsand Bay) ETRS89 DATUM

Insert depth *4₄* enclosed by 5m contour 50° 20' ·483N. , 4° 09' ·929W.

Substitute depth *4₆* enclosed by 5m contour for depth *5₂* 50° 20' ·413N. , 4° 09' ·931W.

Chart: SC5904·15 ETRS89 DATUM

Insert depth *5₂* 50° 20' ·658N. , 4° 09' ·667W.

L2946/09 ENGLAND — South Coast — Looe Bay Southwards — Depths.

Source: HMS *Roebuck*

Chart: SC5904·6 ETRS89 DATUM

Insert depth *21₅* with seabed character, *R* (a) 50° 19' ·02N. , 4° 25' ·71W.

depth *19₇* enclosed by 20m contour (b) 50° 19' ·08N. , 4° 24' ·57W.

Delete depth *24₅* with seabed character, *R*, adjacent to: (a) above

depth *21*, close SW of: (b) above

~~L3753(P)/09 ENGLAND — South Coast — Plymouth Sound — The Bridge to Cawsand Bay and Weston Mill Lake Westwards — Depths. Obstructions.~~

Source: UKHO

1. ~~Latest survey information shows that depths in Plymouth Sound between The Bridge (50° 20' ·95N. , 4° 09' ·60W.) and Cawsand Bay (50° 19' ·88N. , 4° 11' ·35W.) are up to 2m shallower than charted. The most significant of these are as follows:~~

<i>Depth</i>	<i>Position</i>
5₆ m	50° 20' ·857N. , 4° 09' ·482W.
5m	50° 20' ·768N. , 4° 09' ·533W.
4₆ m	50° 20' ·733N. , 4° 09' ·635W.
11₁ m	50° 19' ·803N. , 4° 10' ·577W.
11₁ m	50° 19' ·908N. , 4° 10' ·312W.
5₃ m	50° 20' ·324N. , 4° 10' ·213W.
4₆ m	50° 20' ·061N. , 4° 08' ·624W.
10₂ m	50° 19' ·441N. , 4° 10' ·942W.
10₂ m	50° 19' ·460N. , 4° 10' ·871W.
12₂ m	50° 19' ·438N. , 4° 10' ·584W.

2.—Obstructions exists in the following positions:

<i>Depth</i>	<i>Position</i>
7m	50° 23' 530N. , 4° 12' 112W.
7.4m	50° 19' 879N. , 4° 11' 330W.

3.—(All positions are referred to ETRS89 Datum).

4.—These and other amendments will be included in the next New Editions of charts.

Charts affected: SC30, SC871, SC5602-16, SC5903-10, SC5903-11, SC5903-18A, SC5904-13A, SC5904-14, SC5904-15

L3931/09 ENGLAND — South Coast — Looe Bay — Buoy.

Source: EMU Ltd

Chart: SC5904-6 ETRS89 DATUM

Insert  *F(5)Y.20s* 50° 20' 32N. , 4° 24' 65W.

L5005/09 ENGLAND — South Coast — Approaches to Plymouth — Plymouth Breakwater South-westwards — Depths.

Source: UKHO

Chart: SC5904-13 (plan B, Cawsand Bay) ETRS89 DATUM

Insert depth *9*₂ enclosed by 10m contour (a) 50° 19' 450N. , 4° 09' 776W.
depth *9*₇ enclosed by 10m contour (b) 50° 19' 778N. , 4° 09' 888W.
Delete depth *10*₄, close SE of: (a) above
depth *11*₃, adjacent to: (b) above

Chart: SC5904-14 ETRS89 DATUM

Insert depth *9*₈ enclosed by 10m contour (a) 50° 19' 390N. , 4° 09' 999W.
depth *9*₂ enclosed by 10m contour (b) 50° 19' 450N. , 4° 09' 776W.
(c) 50° 19' 696N. , 4° 10' 078W.
depth *9*₆ enclosed by 10m contour (d) 50° 19' 482N. , 4° 10' 192W.
depth *9*₇ enclosed by 10m contour (e) 50° 19' 778N. , 4° 09' 888W.
Delete depth *10*₇, close NE of: (a) above
depth *10*₄, close SE of: (b) above
depth *9*₉, enclosed by 10m contour, adjacent to: (c) above
depth *10*₃, close NW of: (d) above
depth *11*₃, adjacent to: (e) above

L745/10 ENGLAND — South Coast — Whitsand Bay — Rame Head North-westwards — Maritime limit. Legend.

Source: University of Plymouth

Chart: SC5904-7 ETRS89 DATUM

Insert maritime limit, pecked line, joining:

(a) 50° 20' ·00N. , 4° 15' ·58W.
 (b) 50° 19' ·50N. , 4° 14' ·70W.
 (c) 50° 19' ·10N. , 4° 15' ·05W.
 (d) 50° 19' ·68N. , 4° 16' ·00W.

legend, *Measuring Instruments*, close W of: (a)-(d) above

Notices to Mariners - Weekly Edition 11/2010 ENGLAND — South Coast, Plymouth Sound and Approaches — Chart 30 — New Edition Announcement.

Charts SC5904·13, SC5904·14 and SC5904·15 WGS84 DATUM

The following changes were published in the new edition of chart 30, which is the source chart for the above Tough Chart pages:

Includes changes to depths from the latest UK Government surveys in Cawsand Bay, Western Channel and in the vicinities of the Bridge and Plymouth Breakwater. Also includes a new note concerning Operational Sea Training and a new submarine cable east of Torpoint. Mariners should therefore navigate with caution on pages SC5904·13, SC5904·14 and SC5904·15 and be aware that any subsequent Notices to Mariners applied to these pages are issued for information only.

These changes will be included in the next new edition of SC5904.

L1900/10 ENGLAND — South Coast — Approaches to Falmouth — Porthkerris Point North-eastwards — Buoy.

Source: University of Exeter & Falmouth Harbour Commisioners Notice 3a/10

Chart: SC5904·1 ETRS89 DATUM

Insert  Fl(5)Y.20s 50° 04' ·75N. , 5° 02' ·85W.


L3244/10 ENGLAND — South Coast — Fowey Harbour — Polruan — Lamp Rk — Light-beacon. Beacon. Light.

Source: Fowey Harbour Commissioners

Chart: SC5904·12 ETRS89 DATUM

Substitute  Fl.G.5s3m2M for  (a) 50° 19' ·701N. , 4° 38' ·409W.

Insert sector at light-beacon, as follows: (a) above
 G 357° - 214° (217°)

Delete  Fl.G.5s7m2M and associated sectors 50° 19' ·702N. , 4° 38' ·378W.

Note: Blocks and Notes for the current edition of this product are available as waterproof vinyl labels,

printed specifically for use with Tough Charts. Please email customerservices@ukho.gov.uk or telephone 01823 723366 to request copies. There is no additional charge for this service.