

**Admiralty Leisure Folio**  
**SC5772 South West Aegean Sea**

The Notices to Mariners (NMs) listed below apply to the latest edition of SC5772 (1<sup>st</sup> Edition) published on 9<sup>th</sup> November 2006.

---

**SC13/07 GREECE — South West Aegean Sea — Attikí — Light.**

Source: Eagle Ray Publications

**Chart: SC5772-11 (plan G, Voula Marina) UNDETERMINED DATUM**

Amend                      light to, F.R.3M                      Seaward end of outer breakwater

---

**L2258/07 GREECE — Aegean Sea Coast — Mirtóo Pélagos — Nisos Spétsai — Light.**

Source: UK Hydrographic Office

**Chart: SC5772-14 WGS84 DATUM**

Insert                      ★ FI.WR.18/14M                      37° 16' ·1N. , 23° 10' ·0E.

---

**L2722/07 GREECE — Aegean Sea Coast — Saronikós Kólpos — Piraiévs — Limín Mounikhías — Light.**

Source: Greek Notice 4/80/07

**Chart: SC5772-4 WGS84 DATUM**

Amend                      light to, FI.G.2s9m6M                      37° 56' ·234N. , 23° 39' ·688E.

---

**L3110/07 GREECE — Aegean Sea Coast — Lávrion Southwards — Órmos Gaídhourómandra — Lights. Wreck.**

Source: Greek Notice 5/104/07 & Greek Hydrographic Office

**Chart: SC5772-6 (plan A, Stenón Makrónisou to Athínai (Athens)) WGS84 DATUM**

Insert                      ★ FI.R.12M & FI.G.3M                      (a) 37° 41' ·78N. , 24° 03' ·66E.

Delete                      ☉, adjacent to:                      (a) above

---

**L3796/07 GREECE — West Coast — Nisídhēs Oinoúsai — Nisos Skhiza Eastwards — Buoy.**

Source: Greek Hydrographic Office

**Chart: SC5772-10 WGS84 DATUM**

Delete                      ⚓ Fl.Y.3s (target)                      36° 43' ·2N. , 21° 47' ·2E.

**Chart: SC5772-12 (plan A, Nisídhēs Oinoúsai) WGS84 DATUM**

Delete  *Fl.Y.3s (target)* Bottom right of plan. East of Nísos Skhíza

---

**L4122/07 GREECE — Aegean Sea Coast — Nísídhēs Lagoúses Northwards and Southern Approaches to Piraiévs — Buoyage.**

Source: Greek Notice 7/146/07

**Chart: SC5772·3 WGS84 DATUM**

Insert  *Fl(5)Y.20s* 37° 49' ·7N. , 23° 28' ·2E.

Delete  *Fl.4s* 37° 49' ·2N. , 23° 42' ·0E.

37° 52' ·7N. , 23° 42' ·1E.

37° 54' ·0N. , 23° 39' ·2E.

**Chart: SC5772·6 (plan A, Stenón Makrónisou to Athínai (Athens))  
WGS84 DATUM**

Delete  *Fl.4s* 37° 49' ·2N. , 23° 42' ·0E.

37° 52' ·7N. , 23° 42' ·1E.

---

**SC17/07 GREECE — Ionian Islands — Light.**

Source: Eagle Ray Publications

**Chart: SC5772·12 (plan A, Nísídhēs Oinoúsai) WGS84 DATUM**

Delete light: *Fl.Y.3s (target)* SE corner of plan

---

**L5312/07 GREECE — Aegean Sea Coast — Approaches to Piraiévs — Nísos Póros North-eastwards and Nísídhēs Lagoúses Northwards — Buoyage.**

Source: Greek Notice 9/180/07

**Chart: SC5772·1 WGS84 DATUM**

Insert  *Fl(5)Y.20s* 37° 35' ·9N. , 23° 33' ·6E.

**Chart: SC5772·3 WGS84 DATUM**

Insert  *Fl(5)Y.20s* 37° 35' ·93N. , 23° 33' ·54E.

Delete former  *Fl(5)Y.20s* 37° 49' ·73N. , 23° 28' ·16E.

**Chart: SC5772·7 WGS84 DATUM**

Insert  *Fl(5)Y.20s* 37° 35' ·93N. , 23° 33' ·54E.

---

**L5314/07 GREECE — Aegean Sea Coast — Khersónisos Élouss — Ák. Zóvolo — Lights.**

Source: Greek Notice 9/177/07

**Chart: SC5772·9 (plan A, Ákra Áy. Yeórios to Ákra Maléas) WGS84 DATUM**

Insert      ★ Fl.R.3s5m3M & Fl.G.3s5m3M      36° 26' ·00N. , 23° 06' ·78E.

**Chart: SC5772·10 (plan A, Nísos Kíthira to Nísos Próti) WGS84 DATUM**

Insert      ★ Fl.R.3s5m3M & Fl.G.3s5m3M      36° 26' ·0N. , 23° 06' ·8E.

---

**L5991/07 GREECE — Aegean Sea Coast — Saronikós Kólpos — Kólpos Megáron — Ákra Petrítis Northwards and Westwards — Pilot boarding place.**  
Source: Greek Hydrographic Office

**Chart: SC5772·2 (plan A, Dhióriga Korínthou to Stenó Methánon) WGS84 DATUM**

Delete      ①      37° 55' ·93N. , 23° 22' ·96E.

**Chart: SC5772·3 WGS84 DATUM**

Delete      ①      37° 55' ·93N. , 23° 22' ·96E.

---

**L559/08 GREECE — Aegean Sea Coast — Khersónisos Ermiónis — Ák. Skillaion South-westwards — Lights.**  
Source: Greek Notice 11/221/07

**Chart: SC5772·7 WGS84 DATUM**

Insert      ★ Fl.G&Fl.R.3s6m3M      37° 25' ·31N. , 23° 29' ·06E.

---

**L1062/08 GREECE — West Coast — Nísos Sapiéntza North-westwards and Nísos Zákynthos — Stenōn Methónis and Ákra Skinári Westwards — Buoyage.**  
Source: Greek Notice 12/240/07

**Chart: SC5772·10 (plan A, Nísos Kíthira to Nísos Próti) WGS84 DATUM**

Insert      ⚓ *F(5)Y.20s*      36° 49' ·6N. , 21° 36' ·0E.

---

**L2304/08 GREECE — West Coast — Pelopónnisos — Khersónisos Manís — Ák. Tainaro Southwards — Depth.**  
Source: Greek Chart 109

**Chart: SC5772·10 WGS84 DATUM**

Insert      depth 610 enclosed by 1000m contour, PA      36° 12' ·0N. , 22° 23' ·8E.



---

**L3001/08 GREECE — Aegean Sea Coast — Saronikós Kólpos — Piraiévs — Órmos Falírou — Lights. Buoyage.**  
Source: Greek Notice 3/57/08

**Chart: SC5772·4 WGS84 DATUM**

Insert      ★ Fl.G.5s9m3M      (a) 37° 56' ·060N. , 23° 39' ·980E.

★ Fl.R.5s9m3M      (b) 37° 56' ·100N. , 23° 40' ·260E.

Delete  Fl.G. 1.5s, close W of: (a) above  
 Fl.R. 1.5s, close E of: (b) above

---

**L3116/08 GREECE — Aegean Sea Coast — Kólpos Methánon — Khersónisos Methánon — Méthana — Light.**

Source: Greek Notice 62/08

**Chart: SC5772.2 (plan A, Dhióriga Korínthou to Stenó Methánon ) WGS84 DATUM**

Amend light to, Fl.G.3s8m3M 37° 34' .83N. , 23° 23' .56E.

**Chart: SC5772.3 WGS84 DATUM**

Amend light to, Fl.G.3s8m3M 37° 34' .83N. , 23° 23' .56E.

**Chart: SC5772.7 WGS84 DATUM**

Amend light to, Fl.G.3s8m3M 37° 34' .83N. , 23° 23' .56E.

---

**L3448/08 AEGEAN SEA — Mirtóo Pélagos — Nísos Andímilos South-westwards — Depth.**

Source: Greek Notice 4/80/08

**Chart: SC5772.1 WGS84 DATUM**

Insert  Rep (2008) 36° 45' .60N. , 24° 10' .49E.

**Chart: SC5772.14 COMPATIBLE WITH WGS84 DATUM**

Insert  Rep (2008) 36° 45' .7N. , 24° 10' .5E.

---

**L3454/08 GREECE — Aegean Sea Coast — Saronikós Kólpos — Nísos Psyttáleia and Nísos Fléves — Restricted areas. Legends. Cautionary note.**

Source: Greek Notices 4/76-79/08 & 4/87/08

**Chart: SC5772.3 WGS84 DATUM**

Insert legend, *Entry Prohibited (see Note)*, centred on: 37° 46' .0N. , 23° 46' .7E.

the accompanying note, **NÍSIS FLÉVES ENTRY**

**PROHIBITED**, centred on: 37° 57' .5N. , 23° 42' .0E.

**NÍSIS FLÉVES  
ENTRY PROHIBITED**

Navigation within 0.3 nautical miles of Nísos Fléves (37° 46' .2N. , 23° 45' .7E. ) is prohibited, without prior permission from the Greek naval authorities.

**Chart: SC5772.6 WGS84 DATUM**

Insert legend, *Entry Prohibited (see Note)*, centred on: 37° 46' .0N. , 23° 46' .7E.

the accompanying note, **NISÍS FLÉVES ENTRY**

**PROHIBITED**, centred on:

37° 46' ·0N. , 23° 57' ·0E.

**NISÍS FLÉVES  
ENTRY PROHIBITED**

Navigation within 0.3 nautical miles of Nisís Fléves (37° 46' ·2N. , 23° 45' ·7E. ) is prohibited, without prior permission from the Greek naval authorities.


---

**L3691/08 GREECE — West Coast — Pelopónnisos Westwards — Kalamáta Southwards and Órmos Navarínou Westwards — Buoyage.**

Source: UKHO

**Chart: SC5772·10 (plan A, Nísos Kíthira to Nísos Próti) WGS84 DATUM**

Insert

 *F(5)Y*

36° 58' ·2N. , 22° 05' ·8E.

---

**L4621/08 GREECE — West Coast — Pelopónnisos — Khersónisos Manís — Ák. Taináro Southwards — Depth.**

Source: Greek Notice 6/120/08

**Chart: SC5772·10 (plan A, Nísos Kíthira to Nísos Próti) WGS84 DATUM**

Delete depth 610 enclosed by 1000m contour, *PA*

36° 12' ·1N. , 22° 23' ·8E.

---

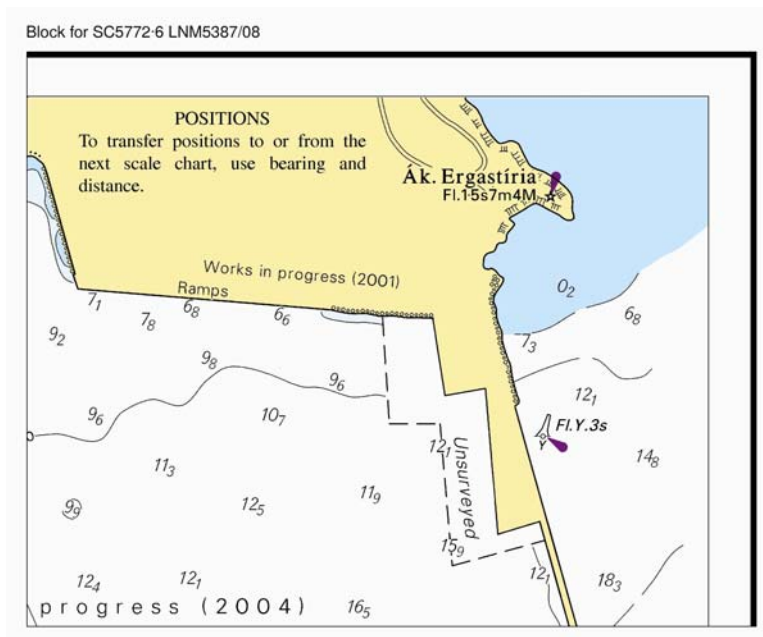
**L5387/08 GREECE — Aegean Sea Coast — Lávrion — Coastline. Unsurveyed area. Legend. Buoy. Depths.**

Source: Greek Notice 7/135/2008

**Chart: SC5772·6 (plan B, Lávrion) WGS84 DATUM**

Insert the accompanying block, showing new buoy and amendments to coastline and unsurveyed areas, centred on:

NE corner of plan



**L115/09 GREECE — Aegean Sea Coast — Argolikós Kólpos — Áy. Andréa — Light.**

Source: Greek Notice 10/199/08

**Chart: SC5772-7 WGS84 DATUM**

Delete ★ F.R.7m5M 37° 22' ·1N. , 22° 47' ·3E.

**L116/09 GREECE — Aegean Sea Coast — Saronikós Kólpos — Piraiévs — Órmos Falírou — Light.**

Source: Greek Notice 10/196/08

**Chart: SC5772-4 WGS84 DATUM**

Insert ★ F.G.3M 37° 56' ·135N. , 23° 41' ·250E.

**L489/09 GREECE — Aegean Sea Coast — Khersónisos Élous, East Coast — Yéfira — Light. Depths. Breakwater.**

Source: Greek Notice 206/08

**Chart: SC5772-9 (plan A, Ákra Áy. Yeórios to Ákra Maléas) WGS84 DATUM**

Insert ★ F.I.R.3M (a) 36° 41' ·03N. , 23° 02' ·36E.

Delete depth 1<sub>s</sub>, adjacent to: (a) above

**Chart: SC5772-9 (plan B, Kólpos Monemvasías) WGS84 DATUM**

Substitute ★ F.I.R.3s7m3M for depth 6 (a) 36° 41' ·03N. , 23° 02' ·36E.

Insert breakwater, single firm line, joining: (a) above  
36° 40' ·99N. , 23° 02' ·36E.

(existing breakwater)


---

**L2233/09 GREECE — Aegean Sea Coast — Saronikós Kólpos — Kalamáki — Limenískos Alímou Southwards — Wreck. Buoy.**

Source: Greek Notices 2/46/09 & 2/52/09

**Chart: SC5772-4 WGS84 DATUM**

Insert  37° 54' ·505N. , 23° 42' ·377E.

 *Fl(2)10s* 37° 54' ·498N. , 23° 42' ·387E.

---

**L4134/09 MEDITERRANEAN SEA — Tunisia, Île Kuriat East-south-eastwards and Cap Afrique East-south-eastwards, Malta Eastwards and Ionian Sea, Nísos Kérkira Westwards and Nísos Zakínthos Southwards — Wrecks. Depths.**

Source: ENC IT200434, ENC GR2AF7TL & UKHO

**Chart: SC5772-14 WGS84 DATUM**

Insert depth 374 37° 34' ·7N. , 20° 59' ·2E.

---

**L5653/09 GREECE — Aegean Sea Coast — Argolikós Kólpos — Órmos Navplíou — Submarine cable.**

Source: Greek Notice 8/186/09

**Chart: SC5772-7 WGS84 DATUM**

Insert submarine cable, , joining: 37° 32' ·70N. , 22° 49' ·31E. (shore)

37° 30' ·95N. , 22° 47' ·49E.

---

**L810/10 GREECE — Aegean Sea Coast — Ákra Souínio Southwards to Nísos Kriti — Khaniá — Legends.**

Source: Greek Notice 12/315/09

**Chart: SC5772-1 WGS84 DATUM**

Insert legend, *SUBMARINE EXERCISE AREA*, centred on: 36° 37' ·5N. , 23° 58' ·5E.

**Chart: SC5772-6 (plan A, Stenón Makrónisou to Athínia (Athens)) WGS84 DATUM**

Insert legend, *SUBMARINE EXERCISE AREA*, between: 37° 34' ·4N. , 24° 02' ·0E.

37° 32' ·8N. , 24° 02' ·0E.

---

**L1483/10 GREECE — Aegean Sea Coast — Nísos Psará — Ák. Áy. Yeóryios — Light.**

Source: Greek Notice 1/30/10


**Chart: SC5772-14 WGS84 DATUM**

Amend range of light to, 19M 38° 32' ·2N. , 25° 36' ·6E.

**L3623/10 GREECE — Aegean Sea Coast — Khersónisos Ermiónis —  
Submarine cable.**

Source: Greek Notice 5/129/10

**Chart: SC5772·8 (panel B, Stenó Spetsón) WGS84 DATUM**

Insert submarine cable, , joining:

37° 17' ·71N. , 23° 11' ·04E. (shore)
37° 17' ·33N. , 23° 11' ·19E.
37° 17' ·53N. , 23° 11' ·21E.
37° 15' ·13N. , 23° 11' ·00E.
(S border)


---

**L3826/10 GREECE — Aegean Sea Coast — Kólpos Petalión — Ak. Veláni  
Southwards — Submarine cable.**

Source: Greek Notice 5/131/10

*Note:* This update will be included in a New Edition of Chart 1657 to be published 12 August 2010.

**Chart: SC5772·1 WGS84 DATUM**

Insert submarine cable, , joining:

37° 59' ·4N. , 24° 01' ·3E. (shore)
37° 58' ·8N. , 24° 02' ·3E.
37° 58' ·7N. , 24° 03' ·9E.