

Admiralty Leisure Folio
SC5767 Croatia – Zadar to Dubrovnik

The Notices to Mariners (NMs) listed below apply to the latest edition of SC5767 (1st Edition) published on 24th May 2007.

L4456/07 CROATIA — Split — Gradska Luka and Kaštelanski Zaljev — Data buoys. Light.

Source: Croatian Notice 8/07

Chart: SC5767·6 WGS84 DATUM

Move  *FI.Y ODAS*, from: 43° 31' ·0N. , 16° 21' ·7E.
to: 43° 31' ·3N. , 16° 22' ·6E.

Chart: SC5767·8 WGS84 DATUM

Delete  *FI.Y ODAS* 43° 31' ·0N. , 16° 21' ·7E.

Chart: SC5767·15 WGS84 DATUM

Insert  *FI.Y ODAS* 43° 31' ·3N. , 16° 22' ·6E.
Amend light to, FI(3)8s9m3M 43° 30' ·27N. , 16° 26' ·42E.

L4534/07 CROATIA — Pašmanski Kanal — Pakoštane Southwards — O.S. Justina — Light-beacon.

Source: Croatian Notice 7/1/07

Chart: SC5767·3 WGS84 DATUM

Insert  FI(2)R.3M 43° 54' ·2N. , 15° 30' ·7E.

Chart: SC5767·4 WGS84 DATUM

Insert  FI(2)R.3M 43° 54' ·2N. , 15° 30' ·7E.

Chart: SC5767·17 (Pašmanski and Vrgadski Kanals) WGS84 DATUM

Insert  FI(2)R.4s6m3M 43° 54' ·2N. , 15° 30' ·7E.

L4566/07 CROATIA — Otok S. Klement, North Coast — Palmežana — Light.

Source: Croatian Notice 7/2/07

Chart: SC5767·16 (plan B, Pakleni Kanal) WGS84 DATUM

Insert  FI(2)G.4s4m2M 43° 09' ·81N. , 16° 24' ·07E.

L4697/07 CROATIA — Poluotok Pelješac — Zaton Žuljana — U. Vucine — Beacon.

Source: Croatian Notice 7/3/07

Chart: SC5767·13 WGS84 DATUM

Insert



PA

42° 53' ·2N. , 17° 26' ·3E.

L5361/07 CROATIA — Kaštelanski Zaliv — Divulje South-eastwards — Buoy. Mooring buoy.

Source: Croatian Notice 9/4/07

Chart: SC5767·6 WGS84 DATUM

Substitute



Fl.Y.2s for



43° 31' ·20N. , 16° 18' ·12E.

L5630(T)/07 CROATIA — Rovinj Westwards and Split Southwards — Buoyage.

Source: Croatian Notices 1(T)-9/07 & 5(T)-9/07 and Croatian Hydrographic Office

1. An ODAS light-buoy, *Fl.Y.4s*, has been temporarily established in the following position (WGS84 Datum):

43° 29' ·20N. , 16° 27' ·93E.

2. It is expected to remain on station until May 2008.

Charts affected - SC5767·6, SC5767·8

L5734/07 CROATIA — Kaštelanski Zaliv — Divulje South-eastwards — Light-beacon. Mooring buoy. Buoy.

Source: Croatian Notices 10/5/07 & 10/6/07

Chart: SC5767·6 WGS84 DATUM

Insert



Fl.Y.2s

(a) 43° 31' ·38N. , 16° 17' ·92E.

Substitute



for



Fl.Y.2s, close SE of:

(a) above

L211/08 CROATIA — Polutok Pelješac — Neretvanski Kanal — Trpanj — Outfall.

Source: Croatian Notice 3/11/07

Chart: SC5767·9 (plan A, Neretvanski Kanal) WGS84 DATUM

Insert

outfall,

-----, joining:

43° 00' ·64N. , 17° 16' ·18E. (shore)

43° 01' ·61N. , 17° 16' ·11E.

L1589/08 CROATIA — Pašmanski Kanal — Otok Pašman — Rt Artina South-eastwards — Light.

Source: Croatian Notice 8-01/08 & Croatian Hydrographic Office

Chart: SC5767·3 WGS84 DATUM

Insert

★ FI.R.3s7m3M

44° 00' ·7N. , 15° 17' ·1E.

L1979/08 CROATIA — Rijeka Krka — Prokljansko Jezero — Rt Smokvica Southwards — Beacon.

Source: Croatian Notice 2/5/08

Chart: SC5767·7 (plan B, Rijeka Krka) WGS84 DATUM

Substitute



for

43° 48' ·78N. , 15° 53' ·09E.

L2548/08 CROATIA — Split — Gradska Luka — Gat S. Petra — Light. Pier. Depth.

Source: Croatian Notices 3/1/08 & 3/3/08

Chart: SC5767·15 WGS84 DATUM

Insert

★ FI(3)8s9m3M

(a) 43° 30' ·275N. , 16° 26' ·305E.

pier, double firm line, width 20m, joining:

(a) above

(b) 43° 30' ·275N. , 16° 26' ·410E.

(existing pier)

Delete

former ★ FI(3)8s9m3M, adjacent to:

(b) above

depth 3₀ and associated 5m contour, close S of:

(b) above

L4403/08 CROATIA — Murtersko More — Otok Murter and Otok Kaprije — Jezera and Kaprije — Lights.

Source: Croatian Chart 100-20

Chart: SC5767·4 WGS84 DATUM

Insert

★ FI.R

(a) 43° 47' ·02N. , 15° 38' ·81E.

Amend

light to, FI.3M

43° 41' ·30N. , 15° 42' ·50E.

L4437/08 CROATIA — Mljetski Kanal — Poluotok Pelješac — L. Prapratna — Light.

Source: Croatian Chart 100-27

Chart: SC5767·12 (plan A, Dubrovnik to Otočić Lirica) WGS84 DATUM

Insert

★ FI.G.3s8m4M

42° 48' ·71N. , 17° 40' ·61E.

L4877/08 CROATIA — Hvarski Kanal — Tučepi — Light.

Source: Croatian Notice 7/8/08

Chart: SC5767·8 WGS84 DATUM

delete

★ FI.R.5s7m4M, from:

43° 16' ·2N. , 17° 03' ·1E.

Chart: SC5767·9 (plan A, Neretvanski Kanal) WGS84 DATUM

L6765/08 CROATIA — Dugi Otok Eastwards — Lavdarski Kanal — Light-beacon. Beacon.

Source: Croatian Notice 10/2/08

Chart: SC5767·3 WGS84 DATUM

Substitute



Fl(2)5s5m2M for



43° 56' ·95N. , 15° 10' ·93E.

L7055/08 CROATIA — Pakleni Otoci — Otok S. Klement, South Coast — Depths.

Source: Croatian Chart 50

Chart: SC5767·10 (plan A, Otok Brač to Otok Vis) WGS84 DATUM

Insert depth 47 enclosed by 50m contour

43° 08' ·83N. , 16° 26' ·30E.

Chart: SC5767·16 (plan B, Pakleni Kanal) UNDETERMINED DATUM

Insert	depth 29 _s enclosed by 50m contour	(a) 43° 10' ·07N. , 16° 19' ·32E.
	depth 20 enclosed by 20m contour	43° 10' ·00N. , 16° 19' ·75E.
	depth 38 and extend 50m approximate contour W to enclose	43° 09' ·16N. , 16° 21' ·45E.
	depth 25	43° 09' ·08N. , 16° 22' ·75E.
	depth 39 enclosed by 50m contour	43° 08' ·58N. , 16° 23' ·64E.
	depth 14 ₇ enclosed by 20m contour	(b) 43° 09' ·19N. , 16° 24' ·75E.
	depth 18 ₈ enclosed by 20m contour	43° 08' ·94N. , 16° 24' ·84E.
	depth 11	43° 09' ·02N. , 16° 25' ·47E.
	depth 7 ₆ enclosed by 10m contour	(c) 43° 09' ·28N. , 16° 26' ·50E.
	depth 47 and extend 50m approximate contour S to enclose	43° 08' ·83N. , 16° 26' ·58E.
Substitute	depth 7 ₆ for depth 8 ₃	43° 09' ·22N. , 16° 22' ·21E.
	depth 13 ₇ for depth 15	43° 08' ·72N. , 16° 23' ·27E.
Delete	depth 55, close NE of:	(a) above
	depth 22, close N of:	(b) above
	depth 15, close N of:	(c) above

L61(P)/09 CROATIA — Splitski Kanal — Otok Čiovo South Coast — Works.

Source: Croatian Notice 9/13(T)/08 & Croatian Hydrographic Office

1. Works are in progress to lay a submarine pipeline in Splitski Kanal within an area bounded by the following positions:

43° 29' ·20N. , 16° 17' ·92E.

43° 27' ·90N. , 16° 17' ·92E.

43° 27' ·90N. , 16° 17' ·72E.

43° 29' ·20N. , 16° 17' ·72E.

2. Vessels are requested to give the area a wide berth.
3. The works are expected to last until the end of 2009.

Chart affected: SC5767·6

**L258/09 CROATIA — Ploče — Berths. Buoyage. Coastline. Depths. Lights.
Wreck. Works.**

Source: Croatian Chart 63

Chart: SC5767·5 (plan B, Ploče) WGS84 DATUM

Insert the accompanying block, showing amendments to berths,
buoyage, coastline, depths, lights, wreck and works, centred
on:

43° 02' ·4N. , 17° 25' ·7E.

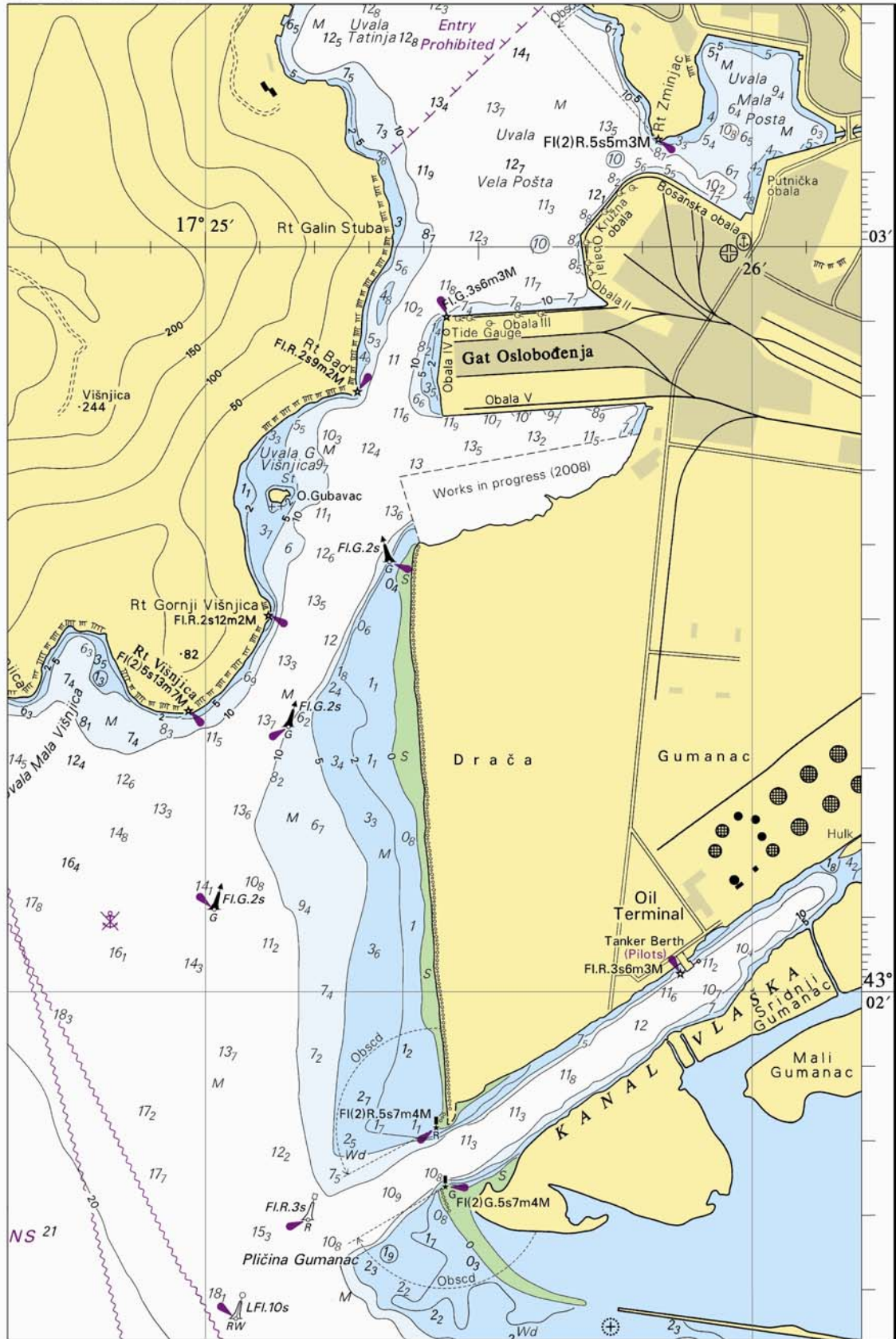


Chart: SC5767-9 (plan A, Neretvanski Kanal) WGS84 DATUM

Insert depth 5₃ and extend 10m contour W to enclose

43° 01' .14N. , 17° 25' .73E.

L1204/09 CROATIA — Lastovski Kanal — Otok Lastovo — Lastovo North-eastwards — Light-beacon. Beacon.

Source: Croatian Notice 1/7/09

Chart: SC5767-13 WGS84 DATUM

Substitute  Fl(2)10s6m2M for  42° 46' ·5N. , 16° 56' ·0E.

L3229/09 CROATIA — Pakleni Otoci — Hrid Pločice North-eastwards — Depth.

Source: Croatian Notice 4/1/09

Chart: SC5767-16 (plan B, Pakleni Kanal) UNDETERMINED DATUM

Insert depth 19 enclosed by 20m contour 43° 08' ·90N. , 16° 23' ·89E.

L4097/09 CROATIA — Split — Vranjic Westwards - Plić Purić and Rt Marjan — Buoy. Light.

Source: UKHO



Chart: SC5767-15 WGS84 DATUM

Amend light-buoy to, Q(9)15s 43° 31' ·889N. , 16° 27' ·490E.
light to, Fl.G.3s8m5M 43° 30' ·464N. , 16° 23' ·275E.

L4447/09 CROATIA — Dugi Otok — Luka Solišćica and Zaliv Pantera — Lighted beacon tower. Light-beacon. Depth.

Source: ENC HR400532 & UKHO

Chart: SC5767-18 (plan A, Sedmovračé) WGS84 DATUM

Insert  Fl.G.3s6m3M Pličina Oključić (a) 44° 09' ·41N. , 14° 50' ·79E.
Delete  Fl.G.3s6m3M Pličina Oključić, close E of: (a) above

L6208/09 CROATIA — Split — Hrid Školjić Southwards — Pličina Garifulin — Light-beacon. Beacon.

Source: Croatian Notice 9/8/09

Chart: SC5767-6 WGS84 DATUM

Substitute  Fl(2) for  43° 31' ·15N. , 16° 24' ·86E.

Chart: SC5767-15 WGS84 DATUM

Substitute  Fl(2) for  43° 31' ·150N. , 16° 24' ·85E.

L6981/09 CROATIA — Otok Iž — O. Knežak North-westwards — Beacon tower.

Source: Croatian Notice 10/2/09

Chart: SC5767-3 WGS84 DATUM

Substitute  Fl(2)5s5M for  44° 02' ·79N. , 15° 07' ·73E.

L6982/09 CROATIA — Šibenski Kanal — Pl. Mali Roženik and Luka Vodice — Buoy. Light-beacon. Beacon. Light.


Source: Croatian Notices 10/3-5/09

Chart: SC5767-4 WGS84 DATUM

Substitute  Q(3)10s for  43° 42' ·69N. , 15° 49' ·98E.

Chart: SC5767-7 (plan A, Šibenik and Approaches) WGS84 DATUM

Substitute  Q(3)10s for  43° 42' ·69N. , 15° 49' ·98E.

 Fl.G.5s5m2M for isolated danger beacon 43° 45' ·31N. , 15° 46' ·73E.

Delete sectors at light, Fl.R.5s7m3M 43° 45' ·33N. , 15° 46' ·57E.

L551/10 CROATIA — Sedmovračće — Otok Sestrunj Westwards and Otok Zverinac Westwards — Depths.

Source: Croatian Notices 11/2-3/2009

Chart: SC5767-18 (plan A, Sedmovračće) WGS84 DATUM

Substitute depth 7_8 enclosed by 10m contour with seabed character, R , for depth 8_2 enclosed by 10m contour with seabed character, R 44° 09' ·87N. , 14° 53' ·33E.

depth 4 enclosed by 10m contour for depth 4_8 enclosed by 10m contour 44° 10' ·41N. , 14° 52' ·68E.

depth 3_9 for depth 4_3 44° 11' ·80N. , 14° 56' ·33E.

L601/10 CROATIA — Neretvanski Kanal — Ploče Southwards — Ušće Neretve — Buoy.

Source: Croatian Notice 11/5/09

Chart: SC5767-9 (plan A, Neretvanski Kanal) WGS84 DATUM

Insert  43° 00' ·79N. , 17° 25' ·98E.

Chart: SC5767-9 (plan B, continuation of Kanal Malog Stona (Kanal Mali Ston)) WGS84 DATUM

Insert  43° 00' ·79N. , 17° 25' ·98E.

L953/10 CROATIA — Zadar West and North-westwards — Otok Sestrunj North-westwards and south-eastwards, Otočići Tri Sestrice Eastwards and Otočići Lagnići South-westwards — Depths. Obstructions.

Source: ENC HR400032

Chart: SC5767-1 WGS84 DATUM

Insert depth 22 (a) 44° 07' ·03N. , 15° 03' ·42E.
Delete depth 25, adjacent to: (a) above

Chart: SC5767-3 WGS84 DATUM

Insert depth 22 (a) 44° 07' ·04N. , 15° 03' ·44E.
Delete depth 25, close N of: (a) above

Chart: SC5767-18 (plan A Sedmovračé) WGS84 DATUM

Substitute depth 8_g for depth 10₇ and extend 10m contour W to enclose 44° 09' ·66N. , 14° 48' ·25E.
depth 14_g enclosed by 20m contour for depth 17 enclosed by
20m contour 44° 12' ·42N. , 14° 55' ·57E.

L1066/10 CROATIA — Dugi Otok Eastwards — O. Mrtonjak Northwards — Light-beacon.

Source: Croatian Notice 12/1/09

Chart: SC5767-3 WGS84 DATUM

Insert  Q.2M 43° 57' ·6N. , 15° 10' ·5E.

L1141/10 CROATIA — Poluotok Pelješac — Neretvanski Kanal and Mljetski Kanal — Crkvice and Zaton Žuljana — Light. Light-beacon. Beacon.

Source: Croatian Notices 12/3-4/09

Chart: SC5767-9 (plan A, Neretvanski Kanal) WGS84 DATUM

Insert  Fl.G.3s7m3M 42° 58' ·51N. , 17° 22' ·41E.

Chart: SC5767-13 WGS84 DATUM

Substitute  Q.2M PA for  PA 42° 53' ·21N. , 17° 26' ·31E.

L1884/10 CROATIA — Pakleni Otoci — Otočić Marinkovac — Rt Rasnik North-eastwards — Depths.

Source: ENC HR500050

Chart: SC5767-10 (plan A, Otok Brač to Otok Vis) WGS84 DATUM

Substitute depth 27 for depth 46 43° 09' ·14N. , 16° 25' ·95E.

Chart: SC5767-16 (plan B, Pakleni Kanal) WGS84 DATUM

Insert depth 27 (a) 43° 09' ·14N. , 16° 25' ·95E.
Delete depth 46, close N of: (a) above

L2625/10 CROATIA — Zadar Westwards and North-westwards — Sedmovračé — Prolaz Maknare and Dugi Otok, North Coast and O. Šilo — Depths. Leading line. Recommended track. Legends. Wreck.

Source: Croatian Chart 32

Chart: SC5767-18 (plan A, Sedmovračé) WGS84 DATUM

Insert leading line, pecked line for 1800m then firm line for 6030m,

extending in direction 269° from:

(a) 44° 11' ·54N. , 14° 53' ·95E. (★)

recommended track, pecked line, joining:

(b) 44° 11' ·53N. , 14° 52' ·59E.

(c) 44° 11' ·47N. , 14° 53' ·99E.

(d) 44° 12' ·00N. , 14° 55' ·23E.

legend, 089° , seaward end of:

(a) above

legend, 093° , along:

(b)-(c) above

legend, 047° , along:

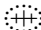
(c)-(d) above

depth 6₆

44° 08' ·50N. , 14° 56' ·62E.

depth 22

44° 10' ·18N. , 14° 53' ·05E.

Delete 

44° 08' ·94N. , 14° 51' ·76E.

L2800/10 CROATIA — Brački Kanal — Supetar — Light-beacon. Light.

Source: Croatian Notices 3/2-3/10

Chart: SC5767-8 WGS84 DATUM

Insert



Fl.G.3s7m7M

43° 23' ·30N. , 16° 32' ·97E.

Amend

light to, Fl.3s7m4M

43° 23' ·10N. , 16° 33' ·30E.

L3207/10 CROATIA — Dubrovnik — Luka Gruž — Berths. Depths. Works. Coastline. Landmarks. Danger line. Buoy. Marina. Legends.

Source: Croatian Notice 3/10

Chart: SC5767-18 (plan B, Luka Gruž) WGS84 DATUM

insert the accompanying block, showing amendments to berths, depths, works, coastline, landmarks, danger line, buoy, marina and legends, centred on:

42° 39' ·58N. , 18° 04' ·96E.

L3848/10 CROATIA — Zadar — Luka Zadar Northwards and South-eastwards — Depths.

Source: Croatian Notice 6/6/10

Chart: SC5767-16 (plan A, Zadar) WGS84 DATUM

Insert	depth 5_2	(a) $44^{\circ} 07' \cdot 55N. , 15^{\circ} 13' \cdot 05E.$
	depth 12_7	(b) $44^{\circ} 07' \cdot 10N. , 15^{\circ} 13' \cdot 52E.$
Delete	depth 6_4 , close W of:	(a) above
	depth 7_3 , adjacent to:	(a) above
	depth 17_5 , adjacent to:	(b) above

L3946/10 CROATIA — Split — Gradska Luka — Gat S. Duje — Light. Pier. Depths. Berth.

Source: Croatian Notice 6/7/10

Chart: SC5767-15 WGS84 DATUM

Insert	★ Fl.2s9m2M	(a) $43^{\circ} 30' \cdot 171N. , 16^{\circ} 26' \cdot 267E.$
	pier, double firm line, width 20m, joining:	$43^{\circ} 30' \cdot 170N. , 16^{\circ} 26' \cdot 382E.$ (existing pier) (a) above
	depth 8_6	(b) $43^{\circ} 30' \cdot 187N. , 16^{\circ} 26' \cdot 351E.$
	depth 11	$43^{\circ} 30' \cdot 156N. , 16^{\circ} 26' \cdot 284E.$
Move	berth number, 19, from:	$43^{\circ} 30' \cdot 165N. , 16^{\circ} 26' \cdot 368E.$
	to:	$43^{\circ} 30' \cdot 151N. , 16^{\circ} 26' \cdot 320E.$
Delete	depth 8 , adjacent to:	(b) above
	depth 10_2 , adjacent to:	(a) above
