

Admiralty Leisure Folio
SC5643 Saint Lucia to Grenada

The Notices to Mariners (NMs) listed below apply to the latest edition of SC5643 (2nd Edition) published on 30th November 2006. The NMs have been corrected for datum shifts, therefore they can be applied directly.

~~L5193(T)/04 WEST INDIES — Windward Islands — Martinique — Fish havens.~~

Source: French Notice 39/10(T)/04

1. ~~Fish havens, marked by special light-buoys, *Fl.Y.*, are established in the following positions:~~

	<i>Charts affected</i>
14° 22' .67N. , 60° 56' .42W.	SC5642-9 (plan A), SC5643-1
14° 22' .64N. , 61° 03' .81W.	SC5643-1
14° 36' .53N. , 61° 12' .88W.	SC5642-4, SC5642-9 (plan B)
14° 37' .44N. , 61° 08' .74W.	SC5642-4, SC5642-9 (plan B)
14° 39' .25N. , 61° 16' .83W.	SC5642-4, SC5642-9 (plan B)
14° 40' .75N. , 61° 10' .13W.	SC5642-4, SC5642-9 (plan B)
14° 41' .28N. , 61° 14' .41W.	SC5642-4, SC5642-9 (plan B)
14° 44' .25N. , 61° 10' .51W.	SC5642-4, SC5642-9 (plan B)
14° 42' .18N. , 61° 21' .22W.	SC5642-4
14° 44' .95N. , 61° 18' .63W.	SC5642-4
14° 49' .62N. , 61° 16' .84W.	SC5642-4, SC5642-9 (plan B)
15° 00' .62N. , 60° 40' .87W.	Outside charted areas of SC5640-SC5643
14° 47' .97N. , 60° 38' .77W.	Outside charted areas of SC5640-SC5643
14° 43' .73N. , 60° 38' .03W.	Outside charted areas of SC5640-SC5643
14° 31' .41N. , 60° 35' .27W.	Outside charted areas of SC5640-SC5643

2. ~~Anchoring, fishing, trawling and dredging are prohibited within 1 mile of the above positions.~~

This Notice has been cancelled by later Notice L640/07

L5190(P)/05 WEST INDIES — Windward Islands — Saint Vincent, South West Coast — Kingstown Bay — Jetty. Light. Wrecks. Dolphins. Piles. Landmark.

Source: St Vincent and the Grenadines Port Authority

1. The following changes have been reported: A new jetty has been established in approximate position 13° 09' .21N. , 61° 13' .63W. It is marked at the seaward end by a light, Fl(2)4s. Wrecks in position 13° 08' .76N. , 61° 13' .56W. are marked by isolated danger marks, situated on piles. Additional dolphins and piles have been established in the vicinity of position 13° 08' .93N. , 61° 13' .44W. The red cupola in position 13° 09' .25N. , 61° 13' .52W. has been obscured by recent developments and is no longer conspicuous. The charted bearing of 42° 30' (13° 08' .42N. , 61° 14' .33W.) for entering Kingstown Bay is now likely to be difficult to determine.

2. Former Notice 3567(P)/02 is cancelled.


Chart affected: SC5643·2 (Saint Lucia to Bequia)
SC5643·7 (plan A, Kingstown Harbour and Approaches)
SC5643·7 (plan B, Saint Vincent, Southwest Coast)

**L640/07 WEST INDIES — Windward Islands — Martinique — Fish havens.
Legend.**

Source: French Notice 11/09(T)/05

Note: Former Notice L5193(T)/04 is cancelled.

Chart: SC5643·1 WGS84 DATUM

Insert 

14° 22' ·57N. , 60° 56' ·64W.

14° 22' ·64N. , 61° 03' ·81W.

Delete legend, *FISH HAVENS See NM5193(T)/04*, centred on:

14° 26' ·5N. , 61° 14' ·3W.

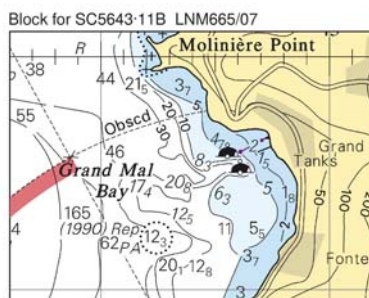
**L665/07 WEST INDIES — Windward Islands — Grenada — Grand Mal Bay
and Saint George's Bay — Depths. Mooring buoys. Submarine pipelines.**

Source: Shell Antilles Ltd & Texaco Eastern Caribbean Ltd

Chart: SC5643·11 (plan B, Grenada, Southern Part) WGS84 DATUM

Insert the accompanying block, showing amendments to
depths, mooring buoys and submarine pipelines,
centred on:


12° 04' ·50N. , 61° 45' ·60W.



**L4231/07 WEST INDIES — Windward Islands — Saint Lucia — Martinique -
Saint Lucia Channel — Wave recorder.**

Source: French Notice 32/26/07

Chart: SC5643·1 WGS84 DATUM




Insert  *FI(5)Y.20s Wave recorder*

14° 10' ·58N. , 60° 56' ·07W.

L5105/07 WEST INDIES — Windward Islands — Saint Lucia — Marigot Harbour — Buoyage.

Source: SLASPA

Chart: SC5643-6 (plan B, Marigot Harbour) WGS84 DATUM

Insert	 <i>F.I.R.6s</i>	13° 58' .030N. , 61° 01' .815W.
	 <i>Q.R</i>	13° 57' .912N. , 61° 01' .588W.
	 <i>Q.G</i>	13° 58' .030N. , 61° 01' .751W.
		13° 57' .943N. , 61° 01' .572W.

L2555(P)/08 WEST INDIES — Windward Islands — Grenadines — Canouan — Taffia Bay — Reclamation area.

Source: *sv Eendracht*

1. The existing airstrip (12° 41' .9N. , 61° 20' .5W.) on Canouan has been extended approximately 1100m in a west-north-westerly direction into Taffia Bay, on an estimated bearing of 305°.
2. The plan of Charlestown Bay on Chart SC5643-8 will be updated when more detailed information becomes available.
3. Mariners are advised to navigate with caution in this area.

Charts affected: SC5643-8, 5643-10

L6157/09 WEST INDIES — Windward Islands — Saint Lucia — Grand Cul De Sac Bay North-westwards — Pilot boarding place.

Source: SLASPA

Chart: SC5643-1 WGS84 DATUM

Move	 , from:	13° 59' .10N. , 61° 04' .14W.
	to:	14° 00' .90N. , 61° 04' .14W.

SC02/10 WEST INDIES — Windward Islands — Saint Lucia — Border Labelling. Note.

Source: UKHO (15/03/2010)

Chart: SC5643-5 (plan C, Rodney Bay) WGS84 DATUM

Substitute	60° for 61°	N and S borders
------------	-------------	-----------------
