

**Admiralty Leisure Folio**  
**SC5641 Sombrero Island to Montserrat and Antigua**

The Notices to Mariners (NMs) listed below apply to the latest edition of SC5641 (2<sup>nd</sup> Edition) published on 23<sup>rd</sup> November 2006. The NMs have been corrected for datum shifts, therefore they can be applied directly.

---

~~L3658(P)/04 WEST INDIES — Leeward Islands — Sint Maarten — Groot Baai South-westwards — Submarine cable.~~

~~Source: Norddeutsche Seekabelwerke GmbH & Co~~

~~1.—Cable laying and associated operations for the SMPR-1 telecommunication cable are expected to take place between September and October 2004. This schedule may be delayed in adverse weather conditions.~~

~~2.—The cable is being laid between the following positions:~~

~~48° 01' .464N. , 63° 03' .254W. (shore)~~

~~48° 01' .357N. , 63° 03' .307W.~~

~~48° 00' .757N. , 63° 03' .388W.~~

~~48° 00' .710N. , 63° 03' .412W.~~

~~48° 00' .690N. , 63° 03' .999W.~~

~~48° 00' .483N. , 63° 04' .141W.~~

~~47° 59' .873N. , 63° 07' .204W.~~

~~3.—Vessels are requested to give any cable laying vessel a wide berth and to avoid anchoring or trawling in the vicinity of the cable.~~

~~4.—Charts will be updated in due course.~~

~~Chart(s) affected — SC5641-1 — SC5641-7 (plan C, Groot Baai & plan D, Simson Baai)~~

---

---

~~L3659(P)/04 WEST INDIES — Leeward Islands — Sint Maarten — Pointe du Canonier South-westwards — Submarine cable.~~

~~Source: Norddeutsche Seekabelwerke GmbH & Co~~

~~1.—Cable laying and associated operations for the SMPR-1 telecommunication cable are expected to take place between September and October 2004. This schedule may be delayed in adverse weather conditions.~~

~~2.—The cable is being laid between the following positions:~~

~~18° 03' .57N. , 63° 08' .71W. (shore)~~

~~18° 03' .06N. , 63° 09' .10W.~~

~~18° 02' .53N. , 63° 10' .06W.~~

~~18° 02' .37N. , 63° 11' .46W.~~

- ~~3.—Vessels are requested to give any cable laying vessel a wide berth and to avoid anchoring or trawling in the vicinity of the cable.~~
- ~~4.—Charts will be updated in due course.~~

~~Chart(s) affected — SC5641-1~~

---

~~**L4008(P)/06 WEST INDIES — Leeward Islands — Saint Christopher (Saint Kitts) — Basseterre Bay — Lights.**~~

~~Source: Report by Regional Maritime Advisor (May 2004)~~

- ~~1.—A report dated May 2004 listed a number of changes to the lights in Basseterre Bay. These include:a) The installation of Fl.R and Fl.Y lights on some of the dolphins at the Port Zante Cruise Terminal.b) The installation of a Fl.R light on the dolphin south of the Deepwater Port jetty.~~
- ~~2.—These changes will be incorporated in Chart SC5641-8 (plan B, Basseterre Bay) once confirmation has been received from local authorities.~~

~~Chart affected — SC5641~~

---

~~**L479/07 WEST INDIES — Leeward Islands — Saint Barthélemy — Approaches to Port de Gustavia — Les Gros Islets Westwards — Wreck.**~~

~~Source: French Notice 48/114/06~~

~~Chart: SC5641-3 (plan B, Saint Barthélemy, Port de Gustavia) WGS84 DATUM~~

~~Insert~~



~~17° 54' .03N. , 62° 51' .76W.~~

---

~~**L966/07 WEST INDIES — Leeward Islands — Montserrat — Plymouth Westwards and Roche's Bluff to Spanish Point Northwards — Cautionary note. Maritime limits. Legends.**~~

~~Source: Montserrat Executive Council~~

~~Chart: SC5641-3 (plan A, Nevis to Montserrat and Antigua) WGS84 DATUM~~

~~Insert~~

~~maritime limit, pecked line, joining:~~

~~16° 44' .35N. , 62° 13' .95W.~~

~~(shore)~~

~~16° 44' .35N. , 62° 16' .12W.~~

~~16° 43' .20N. , 62° 16' .60W.~~

~~(a) 16° 40' .40N. , 62° 13' .40W.~~

		(existing limit)
		and
	(b)	16° 46' ·20N. , 62° 08' ·80W.
		(existing limit)
		16° 45' ·05N. , 62° 06' ·79W.
		16° 41' ·83N. , 62° 06' ·41W.
	(c)	16° 41' ·70N. , 62° 07' ·70W.
		(existing limit)
Substitute	the accompanying note, <b>VOLCANIC ACTIVITY</b> , for the existing note, centred on:	16° 41' ·0N. , 61° 51' ·0W.
Delete	former maritime limit, pecked line, centred on:	16° 42' ·20N. , 62° 13' ·40W.
	former maritime limit, pecked line, joining:	16° 41' ·30N. , 62° 12' ·55W.
		(shore)
		(a) above
		and
		(b) above
		(c) above

**VOLCANIC ACTIVITY**  
Due to the continued threat of activity from the Soufrière volcano, mariners should not enter the exclusion zones indicated on the chart.

**Chart: SC5641·6 (plan A, Montserrat) WGS84 DATUM**

Insert	maritime limit, pecked line, joining:	16° 44' ·35N. , 62° 13' ·96W.
		(a) (shore)
		16° 44' ·35N. , 62° 15' ·48W.
		and
		16° 42' ·22N. , 62° 15' ·48W.
	(b)	16° 40' ·40N. , 62° 13' ·40W.
		(existing limit)
		and
	(c)	16° 46' ·20N. , 62° 08' ·80W.
		(existing limit)
		16° 45' ·91N. , 62° 08' ·30W.
		and
	(d)	16° 41' ·79N. , 62° 08' ·30W.
		(existing limit)
	legend, <i>Volcanic Activity (see Note)</i> , within:	(a)-(b) above


Substitute	the accompanying note, <b>VOLCANIC ACTIVITY</b> , for the existing note, centred on:	16° 43' ·8N. , 62° 11' ·0W.
Delete	former maritime limit, pecked line, joining:	16° 41' ·33N. , 62° 12' ·52W. (shore) (b) above and (c) above 16° 45' ·19N. , 62° 08' ·30W

**VOLCANIC ACTIVITY**  
Due to the continued threat of activity from the Soufrière volcano, mariners should not enter the exclusion zones indicated on the chart.

**L2992/07 WEST INDIES — Leeward Islands — Montserrat — Little Bay — Potato Hill Reef — Wrecks. Depth.**

Source: Quickbird Satellite Image May 2006

**Chart: SC5641·6 (plan B, Little Bay) WGS84 DATUM**

Insert	outline of wreck which does not cover, firm line, joining:	(a) 16° 48' ·050N. , 62° 12' ·402W. (b) 16° 48' ·039N. , 62° 12' ·397W. (c) 16° 48' ·026N. , 62° 12' ·435W. (d) 16° 48' ·037N. , 62° 12' ·438W.
	legend, <i>Wk</i> , close SE of:	(b)-(c) above
Delete	 <i>PA</i>	16° 48' ·063N. , 62° 12' ·436W.
	depth $\mathcal{Z}_2$ , close W of:	(d) above

**L4114/07 WEST INDIES — Nederlandse Antillen — Sint Maarten — Groot Baai Southwards and Eastwards — Proselyte Rif and Poulets — Depths.**

Source: Netherlands Notice 32/448/07

**Chart: SC5641·1 (plan A, Sombbrero Island to Saint Barts) WGS84 DATUM**

Substitute	depth $\mathcal{Z}_5$ enclosed by 5m contour for depth $4_s$ enclosed by 5m contour	17° 59' ·35N. , 63° 03' ·52W.
	depth $\mathcal{Z}_8$ enclosed by 10m contour for depth $\mathcal{Z}_8$ enclosed by 10m contour	18° 00' ·70N. , 62° 59' ·90W.

**L4367/07 WEST INDIES — Nederlandse Antillen — Sint Maarten — Groot Baai — A.C.Wathey Pier — Pier.**

Source: Netherlands Notice 35/482/07

**Chart: SC5641-7 (plan C, Groot Baai) WGS84 DATUM**

Insert pier, single firm line, joining: 18° 00' ·51N. , 63° 02' ·91W.  
( ★ Iso.2s7M)  
18° 00' ·49N. , 63° 02' ·93W.

---

**L4675/07 WEST INDIES — Leeward Islands — Sombrero Islands South-eastwards to Saint Martin Westwards — Depths.**

Source: French Chart 7630

**Chart: SC5641-1 (plan A, Sombrero Island to Saint Barts) WGS84 DATUM**

Insert depth 118 enclosed by 200m contour 18° 26' ·80N. , 63° 13' ·10W.  
depth 23<sub>s</sub> 18° 06' ·20N. , 63° 10' ·70W.  
depth 227 18° 04' ·00N. , 63° 25' ·00W.

---

**L5551/07 WEST INDIES — Nederlandse Antillen — Saba — Fort Baai and Diamantrots — Lights. Islet.**

Source: Netherlands Notice 44/582/07

**Chart: SC5641-2 (plan C, Saba) WGS84 DATUM**

Insert ★ F.G 17° 36' ·97N. , 63° 15' ·12W.  
★ F.R 17° 36' ·93N. , 63° 15' ·10W.  
Substitute ★ Q for islet 17° 38' ·84N. , 63° 15' ·37W.

---

**L358/08 WEST INDIES — Leeward Islands — Northern Antigua — Saint John's Harbour — Loblolly Point Northwards — Buoyage.**

Source: mv *Arcadia*

**Chart: SC5641-11 (plan A, Saint John's Harbour) WGS84 DATUM**

Move  $\frac{!}{\delta}$  Q.G, from: 17° 07' ·795N. , 61° 52' ·370W.  
to: 17° 07' ·800N. , 61° 52' ·388W.  
 $\frac{\Delta}{R}$  Q.R, from: 17° 07' ·770N. , 61° 52' ·390W.  
to: 17° 07' ·738N. , 61° 52' ·400W.

---

**L971/08 WEST INDIES — Nederlandse Antillen — Saba South-westwards and Southwards and Saba Bank Westwards and South-westwards — Depths.**

Source: Netherlands Chart 2020

**Chart: SC5641-2 (plan C, Saba) WGS84 DATUM**

Insert depth 14<sub>s</sub> 17° 30' ·5N. , 63° 13' ·8W.  
depth 32 and extend 50m approximate contour N to enclose 17° 35' ·7N. , 63° 20' ·0W.

---

**L2467/08 WEST INDIES — Leeward Islands — Antigua — Saint John's Harbour Westwards — Sandy Island and South Coast — Cape Shirley — Lights. Beacon.**

Source: Dept of Marine Services and Merchant Shipping, Antigua and Barbuda

**Chart: SC5641-3 (plan A, Nevis to Montserrat and Antigua) WGS84 DATUM**

Substitute      ★ Fl.10s16m10M PA for            17° 08' .06N. , 61° 55' .60W.

**Chart: SC5641-4 WGS84 DATUM**

Substitute      ★ Fl.10s16m10M PA for            17° 08' .06N. , 61° 55' .60W.

Delete          ★ Fl(4)20s150m20M      (a) 17° 00' .01N. , 61° 44' .80W.

sectors at light as follows:      (a) above

Obscd 084° - shore (33°)

Obscd 264° - shore (25°)

**Chart: SC5641-11 (plan A, Saint John's harbour) WGS84 DATUM**

Substitute      ★ Fl.10s16m10M PA for            17° 08' .06N. , 61° 55' .57W.

---

**L4963/08 WEST INDIES — Nederlandse Antillen — Saba — Torrens Punt Westwards and South-westwards — Depths.**

Source: Netherlands Notice 32/357/08

**Chart: SC5641-2 (plan C, Saba) WGS84 DATUM**

Insert      depth 29 enclosed by 30m contour      17° 37' .70N. , 63° 16' .42W.

17° 38' .70N. , 63° 15' .63W.

---

**L5722/08 WEST INDIES — Leeward Islands — Anguilla — Road Bay South-westwards — Legend.**

Source: RFA *Wave Ruler*

**Chart: SC5641-5 (plan C, Road Bay ) WGS84 DATUM**

Delete      legend, (Red and green roof on verandah), centred on:      18° 11' .600N. , 63° 06' .240W.

---

**L1294/09 WEST INDIES — Leeward Islands — Nevis — Long Point Harbour South-westwards — Pilot boarding place.**

Source: Nevis Air & Sea Ports Authority

**Chart: SC5641-9 WGS84 DATUM**

Insert                17° 06' .46N. , 62° 37' .72W.

---

**L2781/09 WEST INDIES — Leeward Islands — Antigua — Saint John's Harbour — Rat Island South-eastwards — Dolphin.**

Source: mv *Ocean Village*

**Chart: SC5641-11 (plan A, Saint John's Harbour) WGS84 DATUM**

Insert Dn PA 17° 07' ·27N. , 61° 51' ·02W.

---


**L2851/09 WEST INDIES — Leeward Islands — Saint Barthélemy —  
Approaches to Port de Gustavia — Le Pain de Sucre North-north-westwards  
and South-south-westwards — Buoyage.**

Source: mv *Ocean Village*

**Chart: SC5641-1 (plan A, Sombrero Island to Saint Barts) WGS84 DATUM**

Insert  Fl.Y(2+1)10s PA 17° 52' ·97N. , 62° 52' ·96W.

**Chart: SC5641-2 (plan A, Saint Barts to Nevis) WGS84 DATUM**

Insert  Fl.Y(2+1)10s PA 17° 52' ·97N. , 62° 52' ·96W.

---

**L3062/09 WEST INDIES — Leeward Islands — Saint Barthélemy — Gustavia  
South-westwards — Les Petits Saints — Wreck.**

Source: French Notice 19/46/09

**Chart: SC5641-3 (plan B, Port de Gustavia) WGS84 DATUM**

Insert  17° 53' ·70N. , 62° 51' ·37W.

---

**L5004/09 WEST INDIES — Leeward Islands — Anguilla Channel — Saint  
Martin Northwards and North-westwards — Île Fourchue Southwards —  
Depths.**

Source: French Chart 7471

**Chart: SC5641-1 WGS84 DATUM**

Insert depth 18 <sub>8</sub> and extend 20m approximate contour W to enclose	18° 08' ·18N. , 63° 01' ·65W.
depth 15 <sub>8</sub>	18° 06' ·72N. , 63° 07' ·62W.
depth 17 <sub>4</sub> and extend 20m approximate contour NW to enclose	18° 06' ·47N. , 63° 08' ·19W.
depth 20 <sub>8</sub>	18° 06' ·37N. , 63° 10' ·32W.
depth 14 <sub>6</sub> and extend 20m approximate contour NW to enclose	(a) 17° 56' ·09N. , 62° 53' ·80W.

Delete depth 27, close NNW of: (a) above

**Chart: SC5641-6 (plan C, Anguilla Channel) WGS84 DATUM**

Insert depth 18 <sub>8</sub> enclosed by 20m approximate contour	18° 08' ·18N. , 63° 01' ·65W.
depth 13 <sub>8</sub>	(a) 18° 06' ·44N. , 63° 05' ·57W.
depth 16 <sub>9</sub>	(b) 18° 07' ·03N. , 63° 06' ·03W.

Delete depth 16<sub>5</sub>, close W of: (a) above

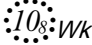
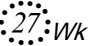
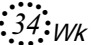
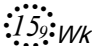
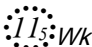
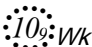
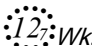
depth 18<sub>3</sub>, close SE of: (b) above

---

**L5211/09 WEST INDIES — Nederlandse Antillen — Sint Eustatius — Oranjestad North-westwards, Westwards and South-westwards and Saint Martin — Groot Baai, Proselyte Rif North-westwards, Simson Baai and Cole Bay Tanker Terminal Eastwards — Nature reserve. Anchorage areas. Depths. Wrecks. Obstructions. Coastline. Restricted area. Mooring buoys. Legends. Cautionary notes.**

Source: Netherlands Notices 28/342/09, 30/358/09, ENC NL52716G & UKHO


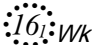
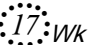
**Chart: SC5641-1 (plan A, Sombrero Island to Saint Barts) WGS84 DATUM**

Insert		18° 02' ·50N. , 63° 08' ·46W.
		18° 02' ·37N. , 63° 08' ·71W.
		18° 00' ·87N. , 63° 07' ·07W.
Substitute	the accompanying note, <b>NATURE RESERVES</b> , for the existing note, centred on:	18° 26' ·6N. , 62° 52' ·0W.
	 for depth 27	18° 01' ·73N. , 63° 07' ·68W.
	 for 	(a) 17° 59' ·63N. , 63° 04' ·19W.
Delete	 close E of:	(a) above

**NATURE RESERVES**

Nature Reserves have been established around Saint Barthélemy (17°54'·0N 62° 50'·0W), Île Fourchue (17°57'·4N 62° 54'·2W), Île Frégate and Île Toc Vers (17° 56'·4N 62° 49'·4W), Saint Martin (18°06'·0N 63° 00'·0W) and Sint Eustatius (17° 29'·4N 62° 58'·6W). For further information see Admiralty Sailing Directions.

**Chart: SC5641-2 (plan A, Saint Barts to Nevis) WGS84 DATUM**

Insert	legend, <b>Nature Reserve (see Note)</b> , centred on:	17° 30' ·83N. , 62° 58' ·20W.
	 centred on:	17° 28' ·65N. , 63° 00' ·70W.
	the accompanying note, <b>NATURE RESERVE</b> , centred on:	17° 38' ·5N. , 63° 04' ·3W.
Substitute	 for 	17° 27' ·85N. , 62° 59' ·63W.

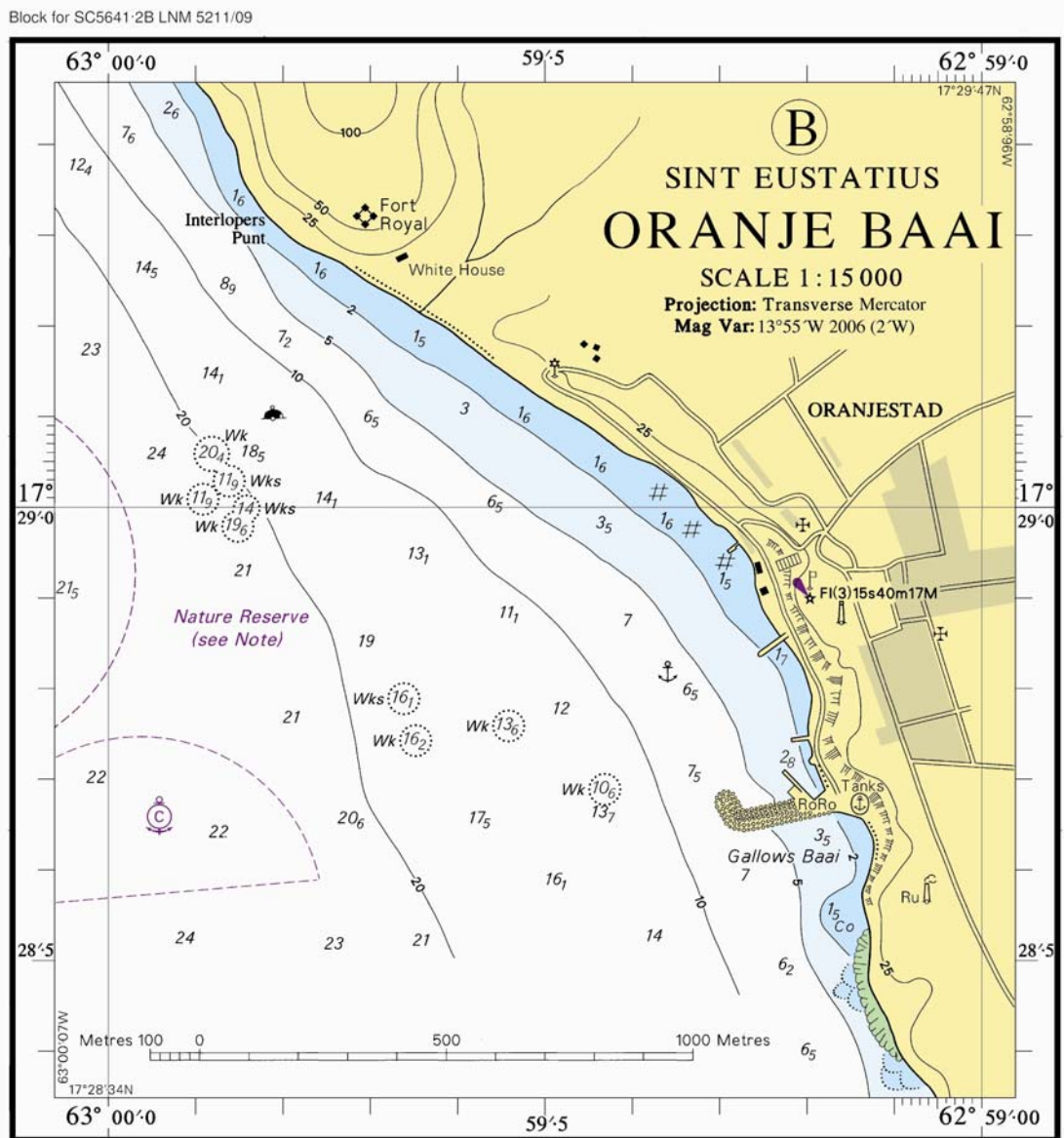
**NATURE RESERVE**

The area around Sint Eustatius between the high waterline and the 30m contour is designated as the Statia National Marine Park. With the exception of the designated anchorage areas, anchoring is allowed only with the permission of the local authorities.

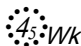
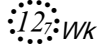
**Chart: SC5641-2 (plan B, Oranje Baai) WGS84 DATUM**

Insert	the accompanying block, showing a new nature reserve and amendments to anchorage areas, depths	17° 28' ·9N. , 62° 59' ·5W.
--------	---	-----------------------------


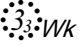
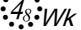
and wrecks, centred on:



**Chart: SC5641-7 (plan C, Groot Baai) WGS84 DATUM**

- Insert  18° 00' .780N. , 63° 03' .460W.
- Delete  17° 59' .630N. , 63° 03' .660W.

**Chart: SC5641-7 (plan D, Simson Baai) WGS84 DATUM**

- Insert  18° 02' .20N. , 63° 05' .95W.
-  18° 02' .19N. , 63° 06' .27W.
-  18° 02' .13N. , 63° 05' .95W.
-  18° 02' .04N. , 63° 06' .04W.



Substitute  for  *Fl. 15s* 18° 03' .06N. , 63° 00' .45W.

**Chart: SC5641-7 (plan B, Oyster Pond) WGS84 DATUM**

Insert  (a) 18° 03' .065N. , 63° 00' .449W.

Delete  *Fl. 15s*, close WSW of: (a) above

**Chart: SC5641-7 (plan C, Groot Baai) WGS84 DATUM**

Insert  18° 00' .692N. , 63° 03' .599W.

Move  Iso.2s7M, from: 18° 00' .506N. , 63° 02' .906W.  
to: 18° 00' .488N. , 63° 02' .923W. (pier)

Delete  (a) 18° 00' .631N. , 63° 03' .050W.

, adjacent to: (a) above

**Chart: SC5641-7 (plan D, Simson Baai) WGS84 DATUM**

Insert  18° 00' .69N. , 63° 03' .60W.

Delete  (a) 18° 02' .16N. , 63° 06' .24W.

, close SW of: (a) above

---


**L6891/09 WEST INDIES — Leeward Islands — Sint Maarten — Fort Amsterdam — Light.**

Source: Netherlands Notice 47/551/09

**Chart: SC5641-1 (plan A, Sombrero Island to Saint Barts) WGS84 DATUM**

Delete  FI(2)10s15M and associated sector 18° 00' .87N. , 63° 03' .56W.

**Chart: SC5641-7 (plan C, Groot Baai) WGS84 DATUM**

Delete  FI(2)10s37m15M and associated sectors 18° 00' .875N. , 63° 03' .560W.

**Chart: SC5641-7 (plan D, Simson Baai) WGS84 DATUM**

Delete  FI(2)10s15M and associated sectors 18° 00' .87N. , 63° 03' .56W.

---

**L6916/09 WEST INDIES — Leeward Islands — Guadeloupe — Cautionary note.**

Source: French Notice 47/86/09

**Chart: SC5641 – Reverse of Front Cover**

Insert the accompanying note, FISH AGGREGATING DEVICES, centred on:

Reverse of front cover, beneath **SUBMARINE CABLES** Note

FISH AGGREGATING DEVICES  
Fish Aggregating Devices (FADs) normally marked by light buoys exist in the coastal waters of this chart. Further FADs may be established without notice.

---

**Notices to Mariners - Weekly Edition 52/2009 WEST INDIES — Saint Christopher, Sint Eustatius and Saba — Chart 487 — New Edition Announcement.**

**Charts SC5641-2 and SC5641-8 WGS84 DATUM**

The following changes were published in the new edition of chart 487, which is the source chart for the above folio sheets:

*The horizontal datum of chart 487 has been transferred to WGS84.*

---

**~~L182(P)/10 WEST INDIES — Nederlandse Antillen — Sint Maarten — Groot Baai — Philipsburg — Pier. Dredged area. Buoyage.~~**  
Source: ~~mv Ocean Village~~

1. ~~It is reported that a new Cruise Pier has been established between the following positions:~~

~~18° 00' 89N., 63° 02' 68W. (shore)  
18° 00' 89N., 63° 02' 76W.  
18° 00' 85N., 63° 02' 77W.  
18° 00' 69N., 63° 02' 96W.  
18° 00' 68N., 63° 02' 95W.  
18° 00' 84N., 63° 02' 76W.  
18° 00' 80N., 63° 02' 70W. (shore)~~

2. ~~In addition a new dredged area, depth 11m, has been established surrounding the new pier.~~  
3. ~~Yellow light buoys, Iso. Y.2s, have been removed from the following positions:~~

~~18° 00' 80N., 63° 02' 75W.  
18° 00' 57N., 63° 02' 99W.~~

4. ~~(All positions are referred to WGS84 Datum)~~  
5. ~~Mariners are advised to contact the local Port Authority for the latest information.~~

**Chart affected: SC5641-7C.**

---

**L1265/10 WEST INDIES — Nederlandse Antillen — Saba — Fort Baai and Well's Baai — Sint Eustatius — Oranje Baai — Depths. Coastline. Breakwaters. Lights. Reported anchorages. Mooring buoys. Obstruction.**  
Source: Netherlands Chart 2716

**Chart: SC5641-2 (plan B, Oranje Baai) WGS84 DATUM**

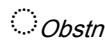
Delete



17° 28' ·82N. , 62° 59' ·36W.

**Chart: SC5641·2 (plan C, Saba) WGS84 DATUM**

Delete



17° 36' ·9N. , 63° 15' ·6W.

**L1266/10 WEST INDIES — Nederlandse Antillen — Sint Maarten — Groot Baai and Proselyte Rif and Simson Baai to Fort Amsterdam and Simson Baai Southwards — Restricted areas. Depths. Mooring buoys. Buoyage. Wrecks. Coastline. Submarine pipeline. Jetties. Legends. Dredged areas. Piers. Quay. Reported anchorage. Dolphins. Lights. Works.**

Source: Netherlands Chart 2716

*Note:* Former Notice 182(P)/10 is cancelled.

**Chart: SC5641·1 (plan A, Sombrero Island to Saint Barts) WGS84 DATUM**

Insert

depth 41

(a) 18° 00' ·12N. , 63° 06' ·87W.

depth 29 enclosed by 30m contour

17° 59' ·91N. , 63° 06' ·21W.

depth 10 enclosed by 10m contour

(b) 17° 58' ·94N. , 63° 02' ·88W.

Delete

depth 130, close NW of:

(a) above

depth 11<sub>6</sub>, adjacent to:

(b) above

**Chart: SC5641·7 (plan D, Simson Baai) WGS84 DATUM**

Insert

the accompanying block, showing amendments to restricted areas, depths, mooring buoys, buoyage, wrecks, coastline, submarine pipeline, jetties and legends, centred on:

18° 01' ·2N. , 63° 05' ·4W.

Insert



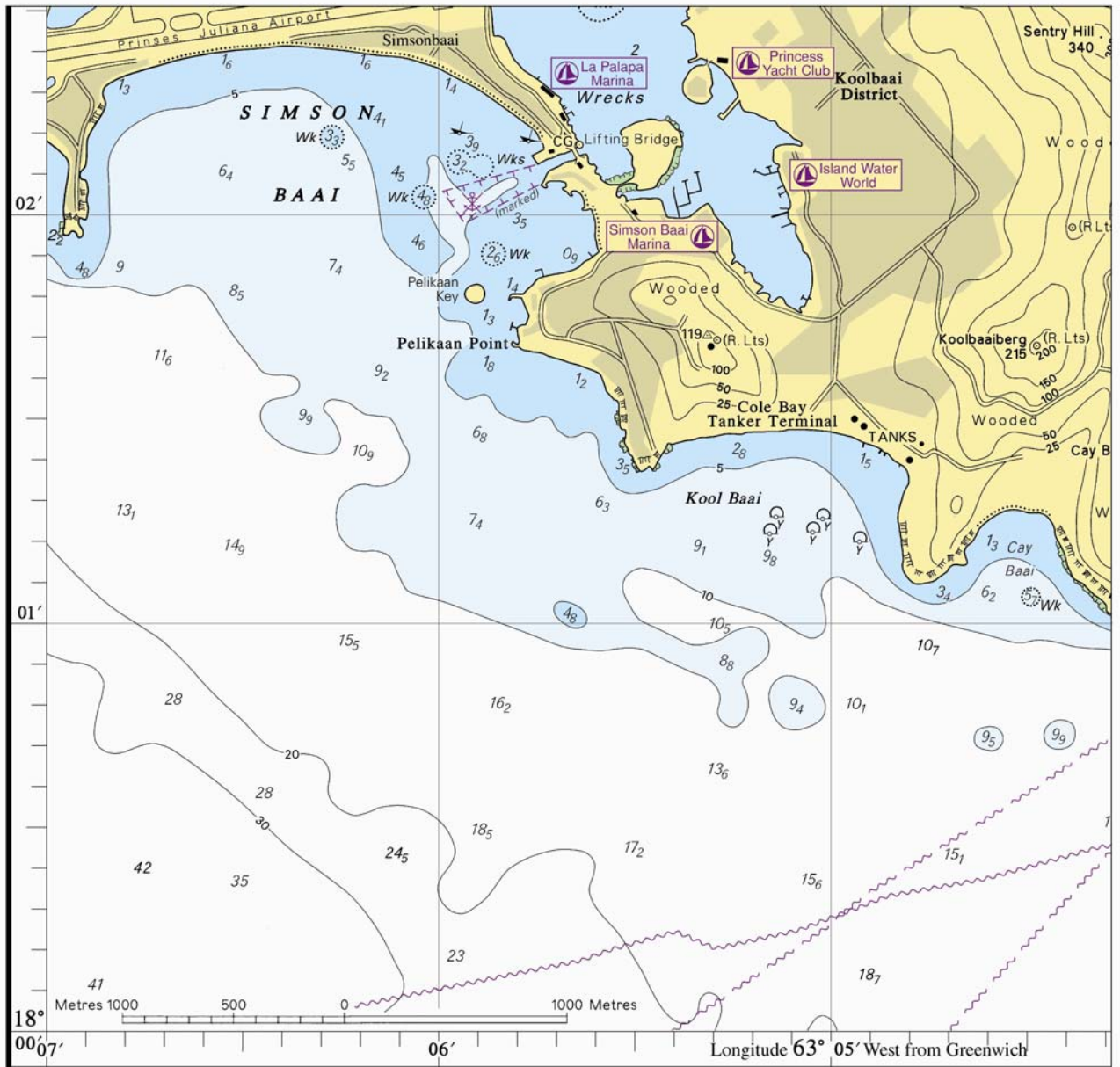
(a) 18° 00' ·61N. , 63° 03' ·59W.

Delete



, close NNW of:

(a) above



**Chart: SC5641-7 (plan C, Groot Baai) WGS84 DATUM**

Insert the accompanying block, showing amendments to dredged areas, depths, restricted area, mooring buoys, buoyage, coastline, piers, quay, wrecks, reported anchorage, dolphins, lights and works, centred on:

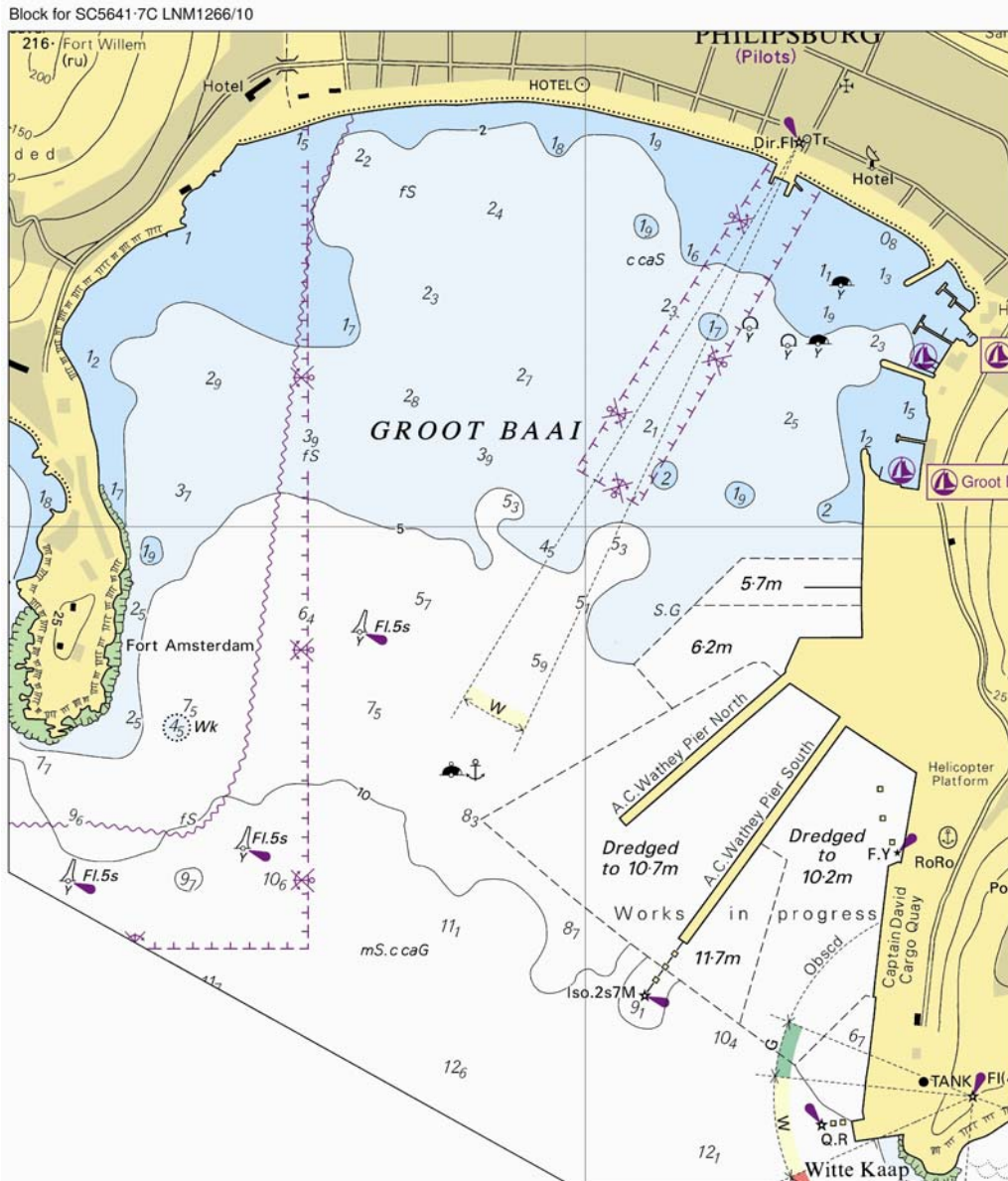
18° 00' ·90N. , 63° 03' ·08W.

Insert depth 5<sub>9</sub>

(a) 17° 59' ·418N. , 63° 03' ·351W.

Delete depth 6<sub>5</sub>, close N of:

(a) above



**L1602/10 WEST INDIES — Nederlandse Antillen — Saint Barthélemy — Port de Gustavia — Pointe du Précipice North-westwards — Wreck.**  
 Source: NGA

**Chart: SC5641-3 (plan B, Port de Gustavia) WGS84 DATUM**

Insert  PA 17° 54' ·40N. , 62° 51' ·40W.

**L2838/10 WEST INDIES — Leeward Islands — Guadeloupe — Depths. Cautionary note. Buoy.**  
 Source: French Charts 7208 & 7345

**Chart: SC5641 WGS84 DATUM**

Substitute the accompanying note, FISH AGGREGATING DEVICES, for existing note: Inside front cover

FISH AGGREGATING DEVICES  
Fish Aggregating Devices (FADs), normally marked by light buoys, exist in the coastal waters of this chart. Anchoring, dredging, fishing and trawling are prohibited within a radius of 1 mile around these devices. Further FADs may be established without notice.

---

**L4119/10 WEST INDIES — Leeward Islands — Saint Barthélemy —  
Approaches to Port de Gustavia — Le Pain de Sucre North-north-westwards  
and South-south-westwards — Buoyage.**

Source: French Chart 7471

**Chart: SC5641·1 (panel A, Sombrero Island to Saint Barts) WGS84 DATUM**

Delete  *Fl.Y(2+1)10s PA* 17° 52' ·98N. , 62° 52' ·98W.

**Chart: SC5641·2 (panel A, Saint Barts to Nevis) WGS84 DATUM**

Delete  *Fl.Y(2+1)10s PA* 17° 52' ·98N. , 62° 52' ·98W.

---