

**Admiralty Leisure Folio**  
**SC5610 The Firth of Clyde**

The Notices to Mariners (NMs) listed below apply to the latest edition of SC5610 (3<sup>rd</sup> Edition) published on 23<sup>rd</sup> October 2008.

---

**L5703/08 SCOTLAND — Firth of Clyde — Dunoon Bank — Buoy.**

Source: Clydeport Estuary Control

**Chart: SC5610-2 ETRS89 DATUM**


Delete  *Fl(5)Y.20s* 55° 56' ·83N. , 4° 54' ·25W.

---

**L5941/08 SCOTLAND — Firth of Clyde — Isle of Arran — Lamlash Harbour — North Channel — Restricted area.**

Source: The Scottish Government Statutory Instruments 317/08

**Chart: SC5610-13 ETRS89 DATUM**

Insert limit of restricted area, , joining: 55° 32' ·60N. , 5° 06' ·51W. (shore)  
55° 31' ·56N. , 5° 05' ·22W. (shore)  
and  
55° 31' ·88N. , 5° 04' ·30W. (shore)  
55° 33' ·00N. , 5° 04' ·82W.  
55° 33' ·00N. , 5° 04' ·96W. (shore)

**Chart: SC5610-17 ETRS89 DATUM**

Insert limit of restricted area, , joining: 55° 32' ·60N. , 5° 06' ·51W. (shore)  
55° 31' ·56N. , 5° 05' ·22W. (shore)  
and  
55° 31' ·88N. , 5° 04' ·30W. (shore)  
55° 33' ·00N. , 5° 04' ·82W. (islet)

**Chart: SC5610-19 ETRS89 DATUM**


Insert limit of restricted area, , joining: 55° 32' ·60N. , 5° 06' ·51W. (shore)  
55° 31' ·56N. , 5° 05' ·22W. (shore)  
and  
55° 31' ·88N. , 5° 04' ·30W. (shore)  
55° 33' ·00N. , 5° 04' ·82W. (islet)

---

**L6593/08 SCOTLAND — West Coast — Campbeltown — Legends. Landmark.**

Source: Argyll and Bute Council

**Chart: SC5610-12 (plan B, Campbeltown Loch) ETRS89 DATUM**

Amend legend to, TV Mast 251·3°, centred on: 55° 25' ·434N. , 5° 34' ·260W.  
legend to, TV MAST (51) 1440m beyond W limit of  
chart, centred on: 55° 25' ·030N. , 5° 36' ·160W.  
Delete  (49) (a) 55° 25' ·068N. , 5° 36' ·200W.  
legend, Sch, close SE of: (a) above

**Chart: SC5610-14 (plan A, Kildonald Point to Ailsa Craig) ETRS89 DATUM**

Delete  (49) 55° 25' ·07N. , 5° 36' ·20W.

---

**L6650/08 SCOTLAND — West Coast — Firth of Clyde — Gourock —  
Kempock Point — Light.**

Source: Clydeport Notice 56/08

**Chart: SC5610-2 (plan A, Southern Approaches to Loch Long including Holy  
Loch) ETRS89 DATUM**

Amend light to, Fl.G.6s11m3M 55° 57' ·77N. , 4° 49' ·05W.

---

**L873/09 IRELAND — North East Coast — Approaches to Larne — Pilot  
boarding place. Radio reporting points.**

Source: Port of Larne

**Chart: SC5610-17 ETRS89 DATUM**

Move  , from: 54° 51' ·83N. , 5° 47' ·68W.  
to: 54° 52' ·15N. , 5° 47' ·68W.

---

**L1130/09 SCOTLAND — West Coast — Firth of Clyde — Upper Loch Fyne —  
Rughan Cairich North-north-eastwards — Marine farm.**

Source: The Scottish Government

**Chart: SC5610-10 (plan A, Loch Fyne) ETRS89 DATUM**

Insert  56° 04' ·85N. , 5° 17' ·19W.

---

**L1200/09 SCOTLAND — West Coast — Loch Ryan — Jamieson's Point  
Eastwards — Buoy.**

Source: Northern Lighthouse Board Notice 7/09

**Chart: SC5610-16 ETRS89 DATUM**

Insert  *Iso.4s* 54° 59' ·77N. , 5° 03' ·82W.

**Chart: SC5610-18 (plan A, Loch Ryan) ETRS89 DATUM**

Insert  *Iso.4s* 54° 59' ·77N. , 5° 03' ·82W.

---

**L1260/09 SCOTLAND — Firth of Clyde — Firth of Clyde Channel — Warden Bank North-westwards — Wreck.**

Source: Clydeport Notices 18-19/09

**Chart: SC5610·2 (plan A, Southern Approaches to Loch Long including Holy Loch) ETRS89 DATUM**

Insert  *Wk* 55° 55' ·84N. , 4° 54' ·98W.

**Chart: SC5610·19 ETRS89 DATUM**

Insert  *Wk* 55° 55' ·84N. , 4° 54' ·98W.

---

~~**L1279(T)/09 SCOTLAND — West Coast — Firth of Clyde — Dunoon Bank — Data buoy.**~~

~~Source: Clydeport Notice 17/09~~

- ~~1. A yellow data collection buoy, *Fl.Y.5s*, has been established in position 55° 56' ·70N. , 4° 54' ·24W. (ETRS89 Datum).~~

~~**Charts affected: SC1907, SC1994, SC5610·2A, SC5906·19B**~~

---

**L1490/09 SCOTLAND — West Coast — Firth of Clyde — Lower Loch Fyne — East Loch Tarbert — Dredged area. Berths. Pontoons. Quay. Depths.**

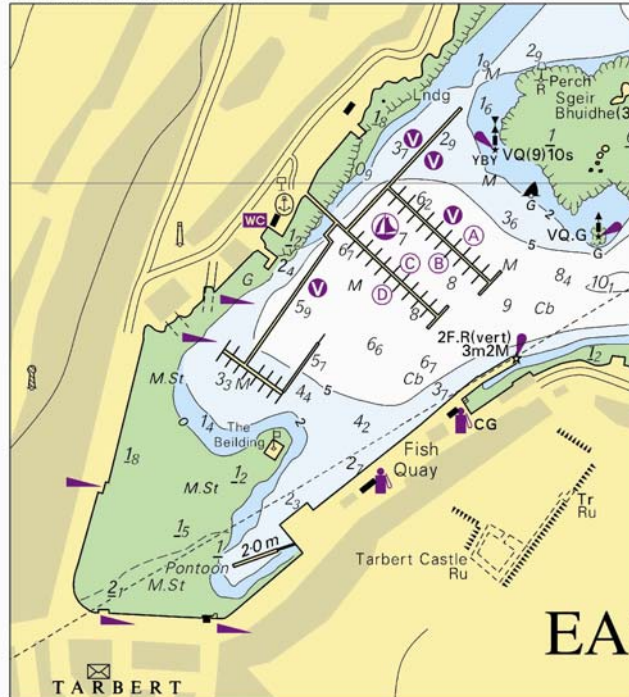
Source: Tarbert (Loch Fyne) Harbour Authority

**Chart: SC5610·12 (plan D, East Loch Tarbert) ETRS89 DATUM**

Insert the accompanying block, showing new dredged area,  
berths and amendments to pontoons, quay and  
depths, centred on: 55° 51' ·92N. , 5° 24' ·71W.

Substitute depth *3<sub>s</sub>* enclosed by 5m contour for depth *5<sub>s</sub>* 55° 51' ·940N. , 5° 23' ·828W.

Block for SC5610-12D LNM1490/09



---

**L2190/09 SCOTLAND — Firth of Clyde — Isle of Bute — Rothesay Bay — Spoil ground.**

Source: Clydeport Operations Limited

**Chart: SC5610-5 ETRS89 DATUM**

Insert circular limit of spoil ground, radius 1.35 cables, centred on: 55° 51' .00N. , 5° 03' .00W.

**Chart: SC5610-6 (plan A, Rothesay Bay) ETRS89 DATUM**

Insert circular limit of spoil ground, radius 1.35 cables, centred on: 55° 51' .00N. , 5° 03' .00W.

**Chart: SC5610-7 (plan A, Rothesay to Largs) ETRS89 DATUM**

Insert circular limit (southern sector only to N limit of chart) of spoil ground, radius 1.35 cables, centred on: 55° 51' .00N. , 5° 03' .00W.

---

**L2208/09 IRELAND — East Coast — Bangor Bay — North Breakwater — Light.**

Source: Quay Marinas Limited

**Chart: SC5610-17 ETRS89 DATUM**



Amend range of light to, 9M 54° 40' .0N. , 5° 40' .3W.

---

**L2621/09 SCOTLAND — Firth of Clyde — Lower Loch Fyne — East Loch Tarbert — Sgeir Bhuidhe South-westwards — Buoy. Light-beacon.**

Source: Northern Lighthouse Board

**Chart: SC5610-12 (plan D, East Loch Tarbert) ETRS89 DATUM**

Insert		VQ(9)10s	(a) 55° 52' ·02N. , 5° 24' ·58W.
Delete		VQ(9)10s, close SE of:	(a) above

**L3490/09 IRELAND — North Coast — Portrush, The Skerries Southwards and Southeastwards, Sheep Island Southwards, Ballycastle, Rathlin Harbour, Rathlin Island Westwards — Depths. Legend.**

Source: British Government Surveys

**Chart: SC5610·17 ETRS89 DATUM**

Insert	depth 31 enclosed by 50m contour	(a) 55° 16' ·23N. , 6° 06' ·47W.
Delete	depth 35 enclosed by 50m contour, adjacent to:	(a) above

**L3736/09 SCOTLAND — Firth of Clyde — Approaches to Gareloch — Helensburgh Pier Southwards — Depths.**

Source: Argyll & Bute Council

**Chart: SC5610·3 (plan A, Cartsdyke to Helensburgh) ETRS89 DATUM**

Insert	depth 1 <sub>7</sub> enclosed by 2m contour	(a) 55° 59' ·973N. , 4° 44' ·280W.
Delete	depth 1 <sub>9</sub> , enclosed by 2m contour, close N of:	(a) above
	depth 2 <sub>4</sub> , close S of:	(a) above

**L3743/09 SCOTLAND — West Coast — Loch Ryan — Stranraer — Marina. Breakwater. Dredged area. Buoyage. Depths. Works. Light.**

Source: Dumfries and Galloway Council

**Chart: SC5610·18 (plan A, Loch Ryan) ETRS89 DATUM**

Delete	 2FG(vert)	54° 54' ·51N. , 5° 01' ·75W.
--------	---	------------------------------

**Chart: SC5610·18 (plan B, Stranraer) ETRS89 DATUM**

Insert	the accompanying block, showing new marina, breakwater and amendments to dredged area, buoyage, depths and works, centred on:	54° 54' ·48N. , 5° 01' ·72W.
--------	---	------------------------------



**L3836/09 SCOTLAND — West Coast — Approaches to the Firth of Clyde — Sanda Island Eastwards — Paterson's Rock — Beacon.**

Source: Northern Lighthouse Board

**Chart: SC5610-14 (plan A, Kildonald Point to Ailsa Craig) ETRS89 DATUM**

Delete  55° 17' .02N. , 5° 32' .53W.

**Chart: SC5610-14 (plan B, Sanda Island) ETRS89 DATUM**

Delete  55° 17' .02N. , 5° 32' .53W.

**L4299/09 SCOTLAND — West Coast — Firth of Clyde — Loch Striven — Legend. Cautionary note.**

Source: Clydeport Operations Limited

**Chart: SC5610-8 (plan A, Kyles of Bute) ETRS89 DATUM**

Insert legend, *Anchorage* (see Note), centred on: 55° 56' .00N. , 5° 04' .08W.

the accompanying note, **LOCH STRIVEN -**

**ANCHORAGES**, centred on: 55° 54' .48N. , 5° 05' .32W.

**LOCH STRIVEN - ANCHORAGES**  
 The upper parts of the loch are periodically used for the laying up of large vessels which may be anchored in rafts of up to six, bow to stern, with numerous anchors deployed. For further details, see Admiralty Sailing Directions and Clydeport Notice to Mariners.

**L5000/09 SCOTLAND — West Coast — Loch Goil — Mooring buoy.**

Source: Briggs Marine Contractors Ltd

**Chart: SC5610-1 (plan A, Loch Goil and Loch Long) ETRS89 DATUM**

Insert  56° 09' .736N. , 4° 54' .492W.

**L5911/09 SCOTLAND — Firth of Clyde — Lower Loch Fyne — The Narrows — Otter Spit South-westwards — Depths.**

Source: Clydeport Operations Limited

**Chart: SC5610-10 (plan A, Loch Fyne) ETRS89 DATUM**

Insert depth 13<sub>4</sub> (a) 56° 00' ·27N. , 5° 21' ·26W.  
Delete depth 17<sub>1</sub>, adjacent to: (a) above

---

**L6085/09 SCOTLAND — West Coast — Kyles of Bute — Burnt Islands — Depths. Drying height.**

Source: Clydeport Operations Ltd

**Chart: SC5610-6 (plan B, Burnt Islands) ETRS89 DATUM**

Insert depth 3<sub>4</sub> (a) 55° 55' ·575N. , 5° 10' ·694W.  
depth 2<sub>3</sub> and extend 5m contour N to enclose (b) 55° 55' ·431N. , 5° 10' ·430W.  
depth 0<sub>3</sub> 55° 55' ·781N. , 5° 10' ·501W.  
drying height 0<sub>7</sub> enclosed by low water line 55° 55' ·775N. , 5° 10' ·540W.  
depth 0<sub>5</sub> and extend 2m contour E to enclose (c) 55° 55' ·751N. , 5° 10' ·450W.  
Delete depth 4<sub>3</sub>, adjacent to: (a) above  
depth 2<sub>9</sub>, adjacent to: (b) above  
depth 1<sub>2</sub>, close W of: (c) above

**Chart: SC5610-8 (plan A, Kyles of Bute) ETRS89 DATUM**

Insert depth 2<sub>3</sub> 55° 55' ·43N. , 5° 10' ·43W.  
Substitute depth 2<sub>3</sub> enclosed by 5m contour for depth 3 and associated 5m contour 55° 55' ·69N. , 5° 10' ·87W.  
depth 0<sub>3</sub> for depth 0<sub>7</sub> 55° 55' ·78N. , 5° 10' ·50W.

---

**L6913/09 SCOTLAND — Firth of Clyde — Inchmarnock Water — Port a'Chruidh — Light. Landmark.**

Source: Northern Lighthouse Board

**Chart: SC5610-11 ETRS89 DATUM**

Delete ★ Iso.R.10M & Oc(2)Y.24M (occas) 55° 46' ·71N. , 5° 19' ·06W.

**Chart: SC5610-19 ETRS89 DATUM**

Delete ★ Iso.R.10M & Oc(2)Y.24M (occas) 55° 46' ·71N. , 5° 19' ·06W.

---

**L719/10 SCOTLAND — Firth of Clyde — Greenock Northwards — Anchorage A5 — Foul.**

Source: fpv *Minna*

**Chart: SC5610-3 (plan A, Cartsdyke to Helensburgh) ETRS89**

Insert # 55° 58' ·41N. , 4° 45' ·79W.

---



**Chart: SC5610-2 (plan, A, Southern Approaches to Loch Long) ETRS89 DATUM**

Insert



*Fl.Y.5s*

55° 56' ·70N. , 4° 54' ·24W.

---

**L1460/10 SCOTLAND — West Coast — Gareloch — Helensburgh Southwards and Faslane Base — Helensburgh Pier and Naval Jetty — Restricted area.**

**Depth.**

Source: HMNB Clyde & Clydeside Surveys Ltd

**Chart: SC5610-3 (plan A, Cartsdyke to Helensburgh) ETRS89 DATUM**

Insert limit of restricted area, anchoring and fishing prohibited,

\*\*\*\*, joining:

56° 00' ·058N. , 4° 44' ·250W.

(shore)

56° 00' ·026N. , 4° 44' ·162W.

55° 59' ·854N. , 4° 44' ·292W.

55° 59' ·926N. , 4° 44' ·506W.

56° 00' ·081N. , 4° 44' ·332W.

56° 00' ·068N. , 4° 44' ·280W.

(shore)

---

**L1567/10 SCOTLAND — West Coast — Kintyre — Campbeltown Loch — Campbeltown Harbour — Buoy.**

Source: Campbeltown Harbour Master

**Chart: SC5610-12 (plan B, Campbeltown Loch) ETRS89 DATUM**

Insert



*F(2)Y.3s*

55° 25' ·590N. , 5° 36' ·021W.

**Chart: SC5610-12 (plan C, Campbeltown Harbour) ETRS89 DATUM**

Insert



*F(2)Y.3s*

55° 25' ·590N. , 5° 36' ·021W.

---

**L1686/10 SCOTLAND — West Coast — Approaches to the River Clyde — Helensburgh Pier, Kilcreggan Pier and Gourock RoRo jetty — Ferry routes.**

Source: Queen's Harbour Master, Clyde

**Chart: SC5610-2 (plan A, Southern Approaches to Loch Long including Holy Loch) ETRS89 DATUM**

Insert ferry route, pecked line, joining:

55° 57' ·62N. , 4° 48' ·85W. (shore)

55° 57' ·88N. , 4° 48' ·34W. (east limit)

and

55° 59' ·04N. , 4° 49' ·20W. (shore)

55° 58' ·82N. , 4° 48' ·37W. (east limit)

**Chart: SC5610·3 (Cartsdyke to Helensburgh) ETRS89 DATUM**


Insert ferry route, pecked line, joining: 56° 00' ·06N. , 4° 44' ·27W. (shore)  
55° 59' ·36N. , 4° 45' ·47W.  
(a) 55° 59' ·16N. , 4° 45' ·90W.  
55° 58' ·82N. , 4° 48' ·37W.  
55° 58' ·88N. , 4° 48' ·56W. (west limit)  
and  
(a) above  
55° 57' ·76N. , 4° 48' ·56W. (west limit)

---

**L2256/10 SCOTLAND — West Coast — Loch Ryan — Buoyage.**

Source: Partrac Ltd.

**Chart: SC5610·18 (plan A, Loch Ryan) ETRS89 DATUM**

Insert  *F(5)Y.20s* 55° 00' ·10N. , 5° 04' ·79W.  
54° 59' ·89N. , 5° 02' ·80W.  
54° 58' ·70N. , 5° 02' ·02W.  
54° 57' ·52N. , 5° 03' ·82W.

---

**L2369/10 SCOTLAND — West Coast — Approaches to the Firth of Clyde — Sanda Island — Paterson's Rock Southwards — Automatic Identification System.**

Source: Northern Lighthouse Board Notice 13/10

**Chart: SC5610·14 (plan A, Kildonald Point to Ailsa Craig) ETRS89 DATUM**

Insert Automatic Identification Sysyem, *AIS*, at light-buoy 55° 16' ·91N. , 5° 32' ·47W.

**Chart: SC5610·14 (plan B, Sanda I) ETRS89 DATUM**

Insert Automatic Identification Sysyem, *AIS*, at light-buoy 55° 16' ·91N. , 5° 32' ·47W.

**Chart: SC5610·17 ETRS89 DATUM**

Insert Automatic Identification Sysyem, *AIS*, at light-buoy 55° 16' ·91N. , 5° 32' ·47W.

**Chart: SC5610·19 ETRS89 DATUM**

Insert Automatic Identification Sysyem, *AIS*, at light-buoy 55° 16' ·91N. , 5° 32' ·47W.

---

**L2724/10 SCOTLAND — West Coast — Kilbrannan Sound — Approaches to Campbeltown — Pilot boarding place.**

Source: Argyll and Bute Council

**Chart: SC5610-14 (plan A, Kildonald Point to Ailsa Craig) ETRS89 DATUM**

Insert

📍 *Large vessels*

55° 26' ·40N. , 5° 29' ·50W.

---

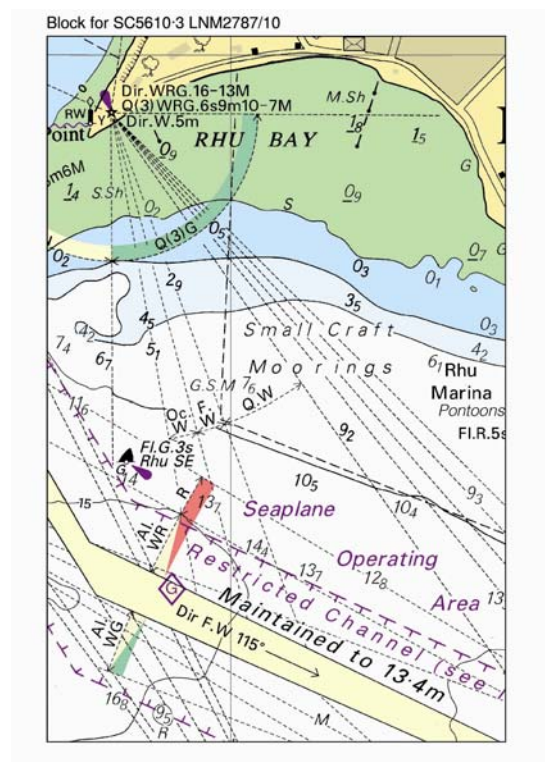
**L2787/10 SCOTLAND — West Coast — Approaches to Gareloch — Rhu Narrows — Rhu Point — Light.**

Source: Queen's Harbour Master, Clyde

**Chart: SC5610-3 (plan B, Rhu Narrows) ETRS89 DATUM**

Insert the accompanying block, showing a new light, centred on:

56° 00' ·701N. , 4° 47' ·000W.



---

**L3127/10 SCOTLAND — West Coast — Firth of Clyde — Loch Striven — Brackley Point Southwards — Marine farm.**

Source: Scottish Government

**Chart: SC5610-5 ETRS89 DATUM**

Insert limit of marine farm, pecked line, joining:

55° 54' ·75N. , 5° 03' ·14W (BORDER).

55° 54' ·74N. , 5° 03' ·30W.

55° 54' ·20N. , 5° 03' ·08W.

55° 54' ·22N. , 5° 02' ·97W.

**Chart: SC5610·8 (plan A, Kyles of Bute) ETRS89 DATUM**

Insert limit of marine farm, pecked line, joining: 55° 54' ·76N. , 5° 03' ·14W.  
55° 54' ·74N. , 5° 03' ·30W.  
55° 54' ·20N. , 5° 03' ·08W.  
55° 54' ·22N. , 5° 02' ·97W.

---

**L3154/10 SCOTLAND — West Coast — Loch Ryan — Old House Point — Works.**

Source: mv *European Causeway*

**Chart: SC5610·18 (plan A, Loch Ryan) ETRS89 DATUM**


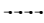


Insert legend, Works in progress (2010), centred on: 54° 59' ·09N. , 5° 02' ·54W.

---


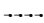

**L3274/10 SCOTLAND — West Coast — Kintyre — Campbeltown Loch — Campbeltown Harbour — Diffuser. Outfall. Buoyage.**


Source: Northern Lighthouse Board & Scottish Water Solutions

**Chart: SC5610·12 (plan B, Campbeltown Loch) ETRS89 DATUM**

Insert  Diffuser (a) 55° 25' ·584N. , 5° 36' ·035W.  
outfall, , joining: 55° 25' ·583N. , 5° 36' ·240W (shore).  
55° 25' ·581N. , 5° 36' ·120W.  
(a) above  
 Q(3)10s (b) 55° 25' ·585N. , 5° 36' ·009W.  
Delete  Fl(2)Y.3s, close NE of: (b) above

**Chart: SC5610·12 (plan C, Campbeltown Harbour) ETRS89 DATUM**

Insert  Diffuser (a) 55° 25' ·584N. , 5° 36' ·035W.  
outfall, , joining: 55° 25' ·583N. , 5° 36' ·240W (shore).  
(a) above  
 Q(3)10s (b) 55° 25' ·585N. , 5° 36' ·009W.

Delete  Fl(2)Y.3s, close NE of: (b) above

---

**L3529/10 SCOTLAND — West Coast — Kintyre — Campbeltown Loch — The Flats — Buoy.**

Source: Northern Lighthouse Board

**Chart: SC5610-12 (plan B, Campbeltown Loch) ETRS89 DATUM**

Delete  55° 25' ·642N. , 5° 34' ·080W.

---

**L4170/10 IRELAND — East Coast — Portavogie and Hunter Rock Southwards — Automatic Identification Systems.**

Source: Commissioners of Irish Lights

**Chart: SC5610-17 [ previous update 2369/2010 ] ETRS89 DATUM**

Insert Automatic Identification System, *AIS*, at light-buoy 54° 52' ·70N. , 5° 45' ·30W.

---

**L4173/10 IRELAND — North East Coast — Belfast Lough — Buoyage. Fog signal.**

Source: Belfast Harbour Commissioners

*Note:* Radar beacon remains unchanged.

**Chart: SC5610-17 ETRS89 DATUM**

Substitute  *ISO.4s* for  *LF1.10s Horn* 54° 41' ·70N. , 5° 46' ·30W.

---